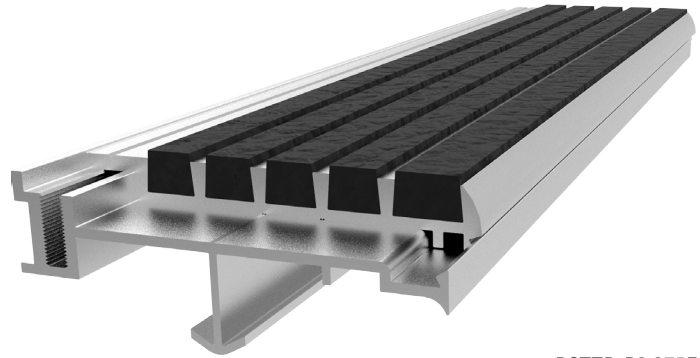


Two-Part

STAIR TREADS + NOSINGS

Save the life of your stairs nosings during construction... Babcock-Davis' Two-Part Stair Treads and Nosings are designed to save your stair nosings from damage during the construction process. The sub-Material and plywood inserts are installed during the construction phase. When the building is near completion, the temporary plywood tread is replaced with the final install of the abrasive anti-slip safety material.



BSTTB-P3.375E
shown

FEATURES

EASY TREAD REPLACEMENT Easily replace worn or damaged treads by unscrewing the existing tread, slide the new one in and fasten to the base.

CONTINUOUS COLOR No need to worry about walking off the color as the abrasive material filler is dyed throughout.

DETAILS

MATERIAL Extruded Aluminum

APPLICATION Poured Concrete, or Steel Pan

TREAD Ribbed Bar Abrasive or Full Abrasive

WIDTH 3-3/8 Inches

LENGTH Up to 12 linear feet

MOUNTING Anchor

NOSING Short-Tipped

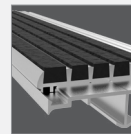
OPTIONS Photoluminescent, Vision Line, Mitered Cuts, Painted Undersides or Taped Tops

CODE COMPLIANCE 2010 ADA 504, 2015 IBC/ICC Section 1029.13.2, 2018 IBC/ICC Section 1029.14.2, and 2016 California Building Code Section 11B-504.4.1 (BSTTF-3.375E only) and 11B-504.5

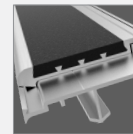
MODELS

| MODEL | WIDTH | TREAD | WIDTH | INSTALL |
|--------------|--------|---------------------|--------|-----------------|
| BSTTB-3.375E | 3-3/8" | Ribbed Bar Abrasive | 3-3/8" | Extruded Anchor |
| BSTTF-3.375E | 3-3/8" | Full Abrasive | 3-3/8" | Extruded Anchor |

TREAD

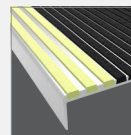


Ribbed Bar
Abrasive

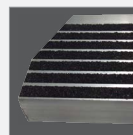


Full
Abrasive

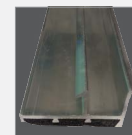
OPTIONS



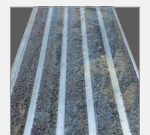
Vision Line



Mitered Cuts



Painted
Undersides



Taped Tops