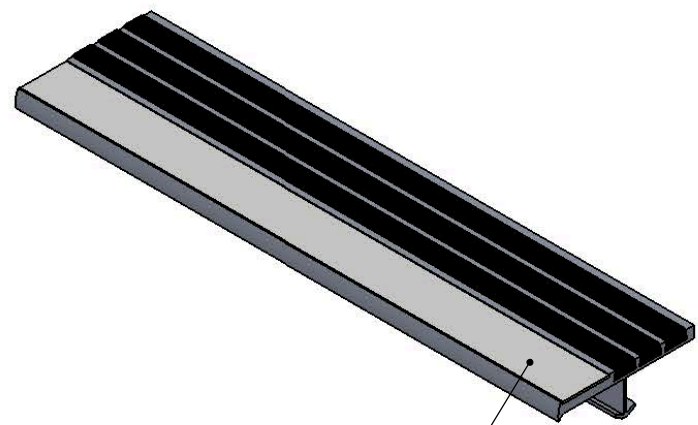
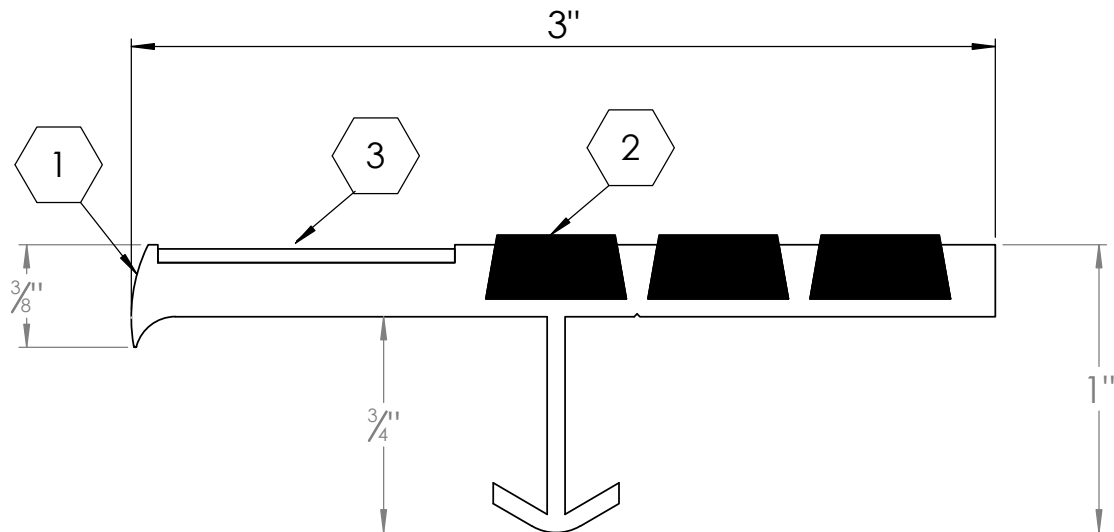


B

B



1" PHOTOLUMINESCENT INSERT

MODEL BSTSM-P3E

**SPECIFICATIONS:**

- ① **BASE:** EXTRUDED ALUMINUM ALLOY 6063 T-6
- ② **ABRASIVE:** ALUMINUM OXIDE SILICON CARBIDE GRANULES IN A UV PROTECTED, 2 PART EPOXY,



A

A

PROPRIETARY AND CONFIDENTIAL: THE INFORMATION CONTAINED IN THIS DRAWING IS THE SOLE PROPERTY OF BABCOCK-DAVIS. ANY REPRODUCTION IN PART OR AS A WHOLE WITHOUT THE WRITTEN PERMISSION OF BABCOCK-DAVIS IS PROHIBITED.

PROJECT:					
ARCHITECT:					
CONTRACTOR:					
QTY:					
PART#:					
 9300 73rd Avenue North Brooklyn Park, MN 55428		TITLE:			
		Stair Tread, Single Stage, 3 Abrasive Ribs, Photoluminescent Insert, Short Tip Nose, Alum Extruded Anchor, 1" Photoluminescent Insert			
NAME	DATE	SIZE	DWG. NO.	REV	
DRAWN	DKL	3/6/19	A	Babcock BSTSM-P3E ShpDr	A
RELEASED	TR	3/6/19	WEIGHT:	SHEET 1 OF 1	