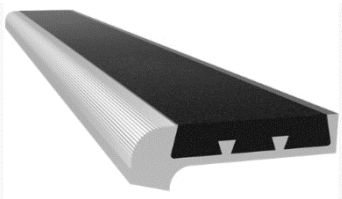


Single-Part Stair Treads + Nosings

Model(s): BSTSF

GENERAL DESCRIPTION



Stair treads and nosings are designed for years of safe egress. Proper installation is critical to the product performance. Locally accepted installation practices and procedures should be followed to ensure a safe stairway system that meets all local code requirements, including Occupational Safety and Health Administration (OSHA), Americans with Disabilities Act (ADA), International Code Council (ICC) and International Building Code (IBC).

Introduction + Safety

Please read the complete instructions carefully before beginning any work. To ensure proper installation and performance of the stair nosing, the following actions must be completed by the installing contractor. Failure to do so will affect product warranty.

GENERAL SAFETY PRECAUTIONS Improper selection, installation, or use can cause personal injury or property damage. It is solely the responsibility of the user, through its own analysis to select products suitable for their specific application requirements, ensure they are properly maintained, and limit their use to its intended purpose. Follow proper local, state and federal regulations for proper installation and operation requirements.

Transportation + Storage

- Inspect all shipments and materials for missing or damaged components and hardware.
- Material must be stored in a clean, dry location.



INSTALLATION

Slip-resistant metal stair nosings are designed to be fully embedded in the substrate (most often concrete) which provides total support for the nosing. Any voids left between the underside of the metal stair nosing and the substrate will allow flexing of the stair nosing itself. It is vital that the installer tamp down the stair nosings to totally seat into the substrate and fully rest upon any riser return, such as in pan-filled steps. This action will prevent the occurrence of hollows and voids, which can lead to flexing and cantilevering of the nosing.

Cast-In (Steel Pan Stairs, Poured Concrete or Terrazzo):

1. Pour the concrete
2. Place the stair nosing into position in the concrete
3. Tamp the stair nosing to ensure proper concrete formation around the anchors on the undersides

OPERATION

Photoluminescent Option

Exposure Requirements:

1. The minimum amount of exposure to direct sunlight is 60 minutes
2. The minimum amount of exposure to artificial ambient illumination is 60 minutes from the following:
 - o Fluorescent straight tube T8 or T12, 4000 – 4500 K color temperature
 - o Incandescent soft white 2700 – 3000 K color temperature
 - o LED 2700 – 3000 K color temperature
2. The control of the ambient illumination necessary to charge the luminous egress path marking system should be restricted to authorized personnel only.
3. Failure to supply the above minimum exposure can prevent the luminous egress path marking from performing as intended.
4. No specific building surface treatment is required for the luminous egress path marking system to function properly.

MAINTENANCE

Keep stair treads and nosings free of debris and dirt by sweeping or vacuuming regularly. Heavy-duty commercial cleaners will not harm nosings but are generally not necessary. If nosings are damaged, please contact the factory for a repair kit or replacement nosings.

Cleaning

- Treads should be swept with a broom or vacuumed with a heavy-duty commercial vacuum cleaner at least once a week.
- When needed, scrub surface vigorously with a stiff bristled brush using a mild detergent. *Do not use any product containing solvents, such as Acetone. It will break down the abrasive adhesive. We suggest using Murphy's Oil Soap® or Simple Green®.* Rinse thoroughly with water after cleaning.
- Scuff marks on the aluminum nose can be removed by rubbing with a fine steel wool and a commercial cleaning agent.
- To remove snow and ice, use deicing compounds such as calcium chloride or sodium chloride.
- **DO NOT CLEAN WITH ABRASIVE GRIT FILL WITH PRESSURE WASHER**

REPLACEMENT PARTS

PART NUMBER	DESCRIPTION
ST-KIT-BLACK-1G	1 GALLON BLACK ABRASIVE GRIT REPAIR KIT
ST-KIT-BLACK-1Q	1 QUART BLACK ABRASIVE GRIT REPAIR KIT
ST-KIT-C1-1Q	1 QUART PHOTOLUMINESCENT ABRASIVE GRIT REPAIR KIT
ST-KIT-C2-1Q	1 QUART BROWN ABRASIVE GRIT REPAIR KIT
ST-KIT-C3-1Q	1 QUART BURGUNDY ABRASIVE GRIT REPAIR KIT
ST-KIT-C4-1Q	1 QUART GRAY ABRASIVE GRIT REPAIR KIT
ST-KIT-C5-1Q	1 QUART YELLOW ABRASIVE GRIT REPAIR KIT
ST-KIT-C6-1Q	1 QUART GREEN ABRASIVE GRIT REPAIR KIT
ST-KIT-C7-1Q	1 QUART RED ABRASIVE GRIT REPAIR KIT
ST-KIT-C8-1Q	1 QUART BUFF/ORANGE ABRASIVE GRIT REPAIR KIT
ST-KIT-C9-1Q	1 QUART BLUE ABRASIVE GRIT REPAIR KIT

REPAIR KIT

Contains Abrasive, Epoxy Hardener and Epoxy Resin

ABRASIVE GRIT COLORS



Black



Gray



Brown



Burgundy



Green



Blue



Red



Buff



Yellow



Photoluminescent

QUESTIONS?

For more information on installation, repair, or replacement please call 1-800-547-2635 or visit www.Nystrom.com.