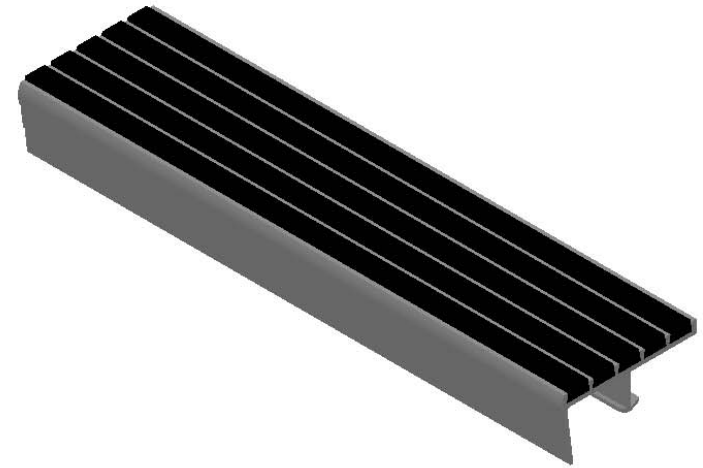


### MODEL A3E

(SINGLE STAGE RIBBED RECYCLED RUBBER)



#### SPECIFICATIONS:

- ① **BASE:** EXTRUDED ALUMINUM ALLOY 6063 T-6
- ② **ECOTREAD:** RECYCLED RUBBER SHEET  
8MM RECYCLED RUBBER GRANULES  
ENCAPSULATED IN A WEAR AND WATER  
RESISTANT ELASTOMERIC NETWORK. 2 PART  
EPOXY, LOCKED INTO EXTRUDED CHANNELS

|   |     |   |         |                   |           |     |
|---|-----|---|---------|-------------------|-----------|-----|
| PROJECT:  |     |   |         |                   |           |     |
| ARCHITECT:  |     |   |         |                   |           |     |
| CONTRACTOR:   |     |   |         |                   |           |     |
| QTY:  |     |   |         |                   |           |     |
| PART#:  |     |   |         |                   |           |     |
| <br>9300 73rd Avenue North<br>Brooklyn Park, MN 55428 |     | TITLE: Stair Tread, Single Stage,<br>5 1/8" x 1/4" Ribbed, Short Tip Nose |         |                   |           |     |
|   |     | NAME  | DATE    | SIZE              | DWG. NO.  | REV |
| DRAWN   | DKL | 3/6/19  | A       | Babcock BSTSB-A3E | 001/shpDr | A   |
| RELEASED  | TR  | 3/6/19  | WEIGHT: | SHEET 1 OF 1      |           |     |