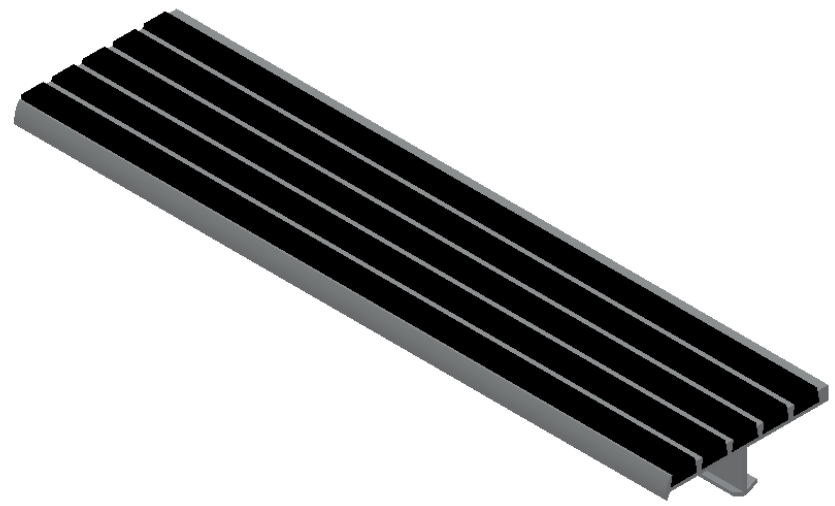
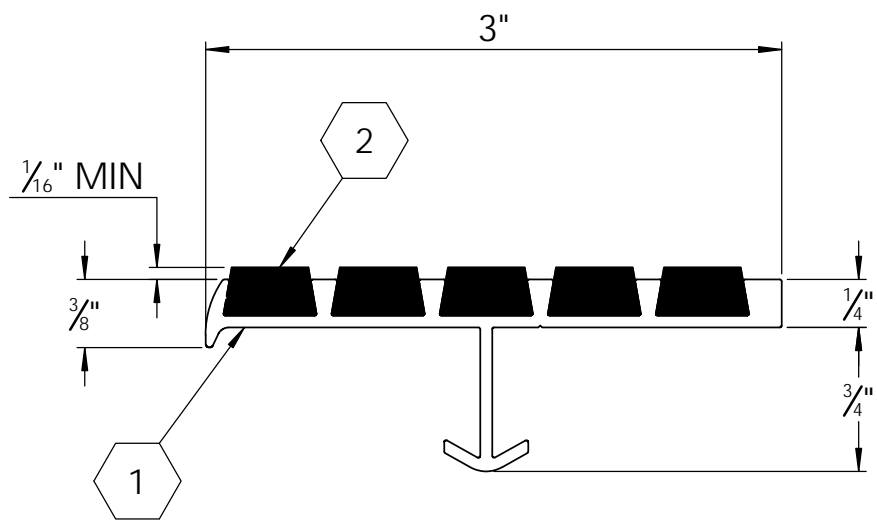


B

B



MODEL P3E-ECO

(SINGLE STAGE ECO-TREAD RIBS)

SPECIFICATIONS:

- ① **BASE:** EXTRUDED ALUMINUM ALLOY 6063 T-6
- ② **ECOTREAD:** RECYCLED RUBBER SHEET
8MM RECYCLED RUBBER GRANULES ENCAPSULATED IN A WEAR AND WATER RESISTANT ELASTOMERIC NETWORK. 2 PART EPOXY, LOCKED INTO EXTRUDED CHANNELS
- 3. **BASE FINISH:** MILL
- 4. **POURED CONCRETE STAIRS:** NOSING SHALL TERMINATE NO MORE THEN 3" FROM END OF STEPS
- 5. **CONCRETE FILLED STEEL PAN STAIRS:** NOSING SHALL BE FULL LENGTH OF STEPS, LESS 1/8" CLEARANCE
- 6. **COLOR:** BLACK (STANDARD), SAFETY YELLOW, BLACK-BLUE, BLACK-GRAY
- 7. **LENGTH:** 12'0" MAXIMUM
- 8. **UL 1994 LISTED:** COMBINED WIDTH OF PHOTO-LUMINESCENT MATERIAL SHALL NOT BE LESS THAN 1"

LENGTH	QTY	COLOR

PROJECT:			
ARCHITECT:			
CONTRACTOR:			
QTY:			
PART#:		BSTSB-P3E-ECO	
 9300 73rd Avenue North Brooklyn Park, MN 55428		TITLE: Stair Tread, Single Stage, Recycled Rubber, 5 Eco-Tread Ribs, Short Nose, Alum Extruded Anchor,	
	NAME	DATE	SIZE
DRAWN	DKL	3/31/23	A
RELEASED	GLN	3/31/23	
DWG. NO.		REV	
Babcock STN BSTSB-P3E-ECO ShpDr		A	
WEIGHT: 1.17 LB			SHEET 1 OF 1

PROPRIETARY AND CONFIDENTIAL: THE INFORMATION CONTAINED IN THIS DRAWING IS THE SOLE PROPERTY OF BABCOCK-DAVIS. ANY REPRODUCTION IN PART OR AS A WHOLE WITHOUT THE WRITTEN PERMISSION OF BABCOCK-DAVIS IS PROHIBITED.