

# Lume-A-Lite™

## STAIR TREAD + NOSING

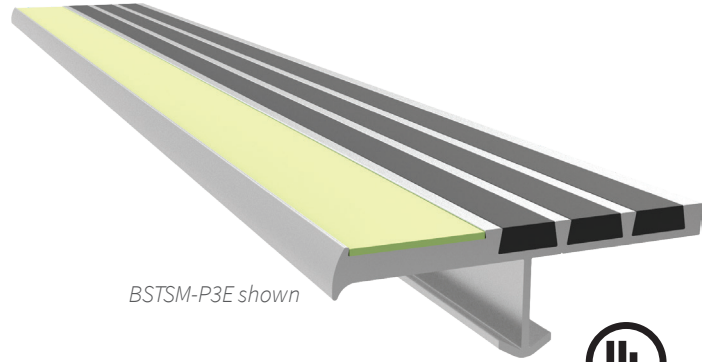
Lume-A-Lite™ Ribbed Bar Abrasive Stair treads are an industry leading glow-in-the-dark option. These treads are perfect for indoor and outdoor applications such as stadiums and parking garages.

### FEATURES

**BRIGHTNESS** The embedded glow-in-the-dark photoluminescent material provides needed illumination for a safe exit. Choose between an embedded resin strip with superior glow or abrasive grit strip that exceeds code requirements.

**DURABILITY** The stair treads and nosings are long-lasting. They are designed with materials that last, like extruded aluminum, abrasive grit and EcoTread™.

**INSTALLATION EASE** Installation and maintenance manuals are available at [babcockdavis.com](http://babcockdavis.com).



BSTSM-P3E shown



### DETAILS

**MATERIAL** Extruded Aluminum, Abrasive Grit or EcoTread™, and 53 mil Resin or 21 mil Abrasive Grit Insert

**COLOR** Photoluminescent strip and optional tread colors

**APPLICATION** Poured Concrete, Steel Pan, or Wood

**TREAD** Ribbed Abrasive or EcoTread

**WIDTH** 3 inches

**LENGTH** Up to 12 linear feet

**MOUNTING** Anchor or Drilled Hole, Mech. Fastened

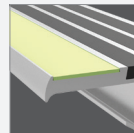
**NOSING** Short-Tipped, None

**OPTIONS** Stair Nosing Guards™, Mitered Cuts, Painted Undersides or Taped Tops

**CODE COMPLIANCE** 2015/2018 IBC Section 1025, 2015/2018 IFC Section 1025

**TEST STANDARD** ASTM 2072, UL 1994

### NOSING

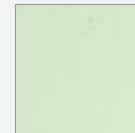


Short-Tipped (P)

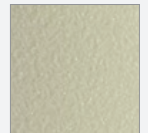


None (N)

### INSERT

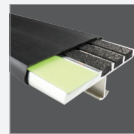


Resin Strip

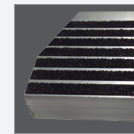


Abrasive Grit Strip (T)

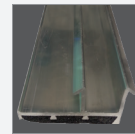
### OPTIONS



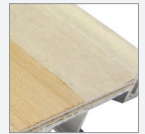
Stair Nosing Guards™



Mitered Cuts



Painted Undersides



Taped Tops

### ORDER GUIDE

MODEL	WIDTH	NOSING	INSERT	INSTALL
BSTSM-P3E	3"	Short-Tipped	Resin Strip	Cast-In, Extruded Anchor
BSTSM-P3D	3"			Drilled Hole, Mech. Fastened
BSTSM-P3E-T	3"		Abrasive Grit Strip	Cast-In, Extruded Anchor
BSTSM-P3D-T	3"			Drilled Hole, Mech. Fastened
BSTSM-N3E	3"	None	Resin Strip	Cast-In, Extruded Anchor
BSTSM-N3D	3"			Drilled Hole, Mech. Fastened
BSTSM-N3E-T	3"		Abrasive Grit Strip	Cast-In, Extruded Anchor
BSTSM-N3D-T	3"			Drilled Hole, Mech. Fastened

\*Stair Nosing Guards™ available on 3" short-tipped (P3) nosings only.

ECOTREAD™ MODELS	WIDTH	NOSING	TREAD/INSERT	INSTALL
BSTSM-P3E-ECO	3"	Short-Tipped	EcoTread™ and Resin Strip	Cast-In, Extruded Anchor
BSTSM-P3D-ECO	3"			Drilled Hole, Mech. Fastened
BSTSM-P3E-T-ECO	3"		EcoTread™ and Abrasive Grit Strip	Cast-In, Extruded Anchor
BSTSM-P3D-T-ECO	3"			Drilled Hole, Mech. Fastened
BSTSM-N3E-ECO	3"	None	EcoTread™ and Resin Strip	Cast-In, Extruded Anchor
BSTSM-N3D-ECO	3"			Drilled Hole, Mech. Fastened
BSTSM-N3E-T-ECO	3"		EcoTread™ and Abrasive Grit Strip	Cast-In, Extruded Anchor
BSTSM-N3D-T-ECO	3"			Drilled Hole, Mech. Fastened