

Lume-A-Lite™

TWO-PART STAIR TREAD + NOSING

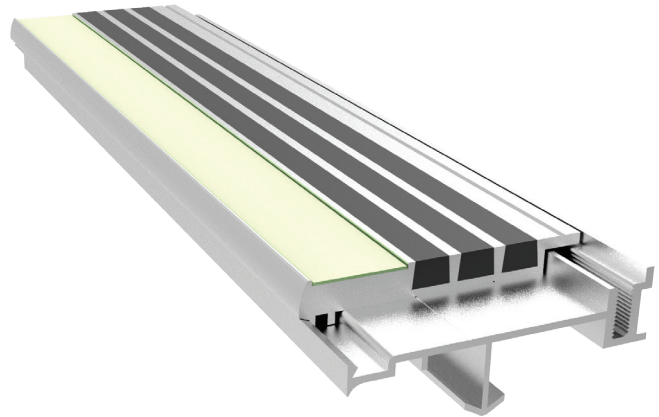
The Lume-A-Lite two-part system allows for quick and easy damage replacement. The 1 inch wide front rib provides a continuous photoluminescent stripe that will glow-in-the-dark when activated.

FEATURES

BRIGHTNESS The embedded glow-in-the-dark photoluminescent material provides needed illumination for a safe exit. Chose between an embeded resin strip with superior glow or abrasive grit strip that exceeds code requirements.

DURABILITY The stair treads and nosings are long-lasting. They are designed with materials that last, like extruded aluminum, abrasive grit and EcoTread.

INSTALLATION EASE Easily replace damaged or worn treads by installing new inserts. Installation and maintenance manuals are available at www.babcockdavis.com.



BSTTM-P3.375E
shown



DETAILS

MATERIAL Extruded Aluminum, Abrasive Grit or EcoTread™, and 53 mil Resin or 21 mil Abrasive Grit Insert

COLOR Photoluminescent strip and optional tread colors

APPLICATION Poured Concrete or Steel Pan

TREAD Ribbed Abrasive or EcoTread

WIDTH 3-3/8 inches

LENGTH Up to 12 linear feet

MOUNTING Anchor

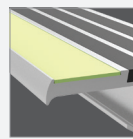
NOSING Short-Tipped

OPTIONS Mitered Cuts, Painted Undersides or Taped Tops

CODE COMPLIANCE 2015/2018 IBC Section 1025, 2015/2018 IFC Section 1025

TEST STANDARD ASTM 2072, UL 1994

NOSING



Short-Tipped

INSERT

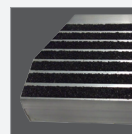


Resin Strip

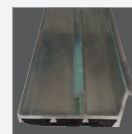


Abrasive Grit

OPTIONS



Mitered Cuts



Painted Undersides



Taped Tops

MODELS

MODEL	WIDTH	INSERT
BSTTM-P3.375E	3-3/8"	Resin Strip
BSTTM-P3.375E-T	3-3/8"	Abrasive Grit

ECOTREAD MODELS

MODEL	WIDTH	TREAD/INSERT
BSTTM-P3.375E-ECO	3-3/8"	EcoTread™ and Resin Strip
BSTTM-P3.375E-T-ECO	3-3/8"	EcoTread™ and Abrasive Grit Strip