

UPDATED
Personnel™
Roof Hatch



Industry's Best Hatch!
Page 6

Rooftop Products

ROOF HATCH, SMOKE VENT + FALL PROTECTION
07 7200 | PRODUCT CATALOG



Great Products. Better Partners.



Great Products. Better Partners.



FIRE PROTECTION SPECIALTIES

05 5000



FALL PROTECTION

05 5213 / 07 7200



ACCESS DOORS

08 3100



FLOOR DOORS

08 3483



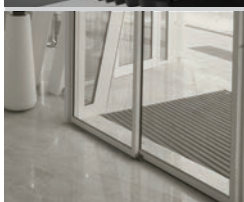
STAIR TREADS + NOSINGS

05 5000



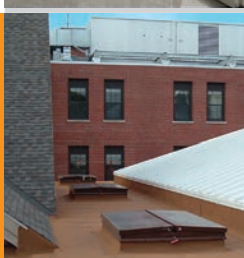
LUMINOUS EGRESS

10 1443



ENTRANCE MATS + GRILLES

12 4813 / 12 4816



ROOF HATCHES + SMOKE VENTS

07 7200



Quality + Safety above all



Rooftop Products

Access 4

ROOF HATCHES 5-10

ThermalMAX™	5
Personnel™	6-7
Security	8
SunLit™	9
Equipment Hatch	10

ROOF HATCH FALL PROTECTION 11-12

Safety Railing	11
Ladder Safety Post	12
Safety Grab Bar	12

SMOKE VENTS 13-17

SafeMAX™	13-14
LightMAX™	15-16
AcousticMAX™	17

SMOKE VENT FALL PROTECTION 18-19

Safety Railing	18
Burglar Bars	19
Screen	19

GUARDRAIL FALL PROTECTION 20-21

Weighted Base	20
Permanent	21

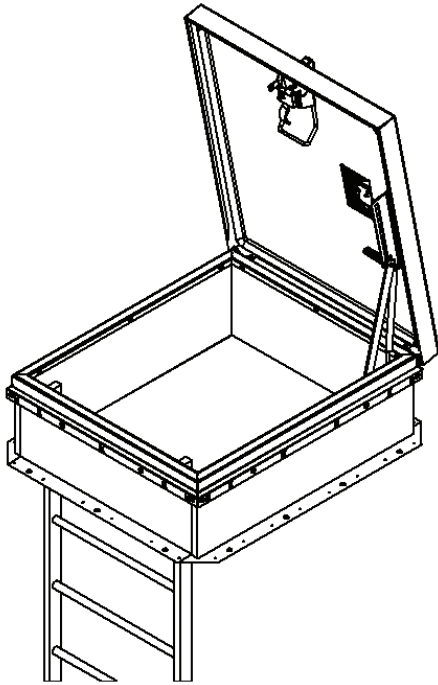
EXTERIOR ACCESS DOORS 22-23

Exterior Access Door	22
Coastal Zone Exterior	23

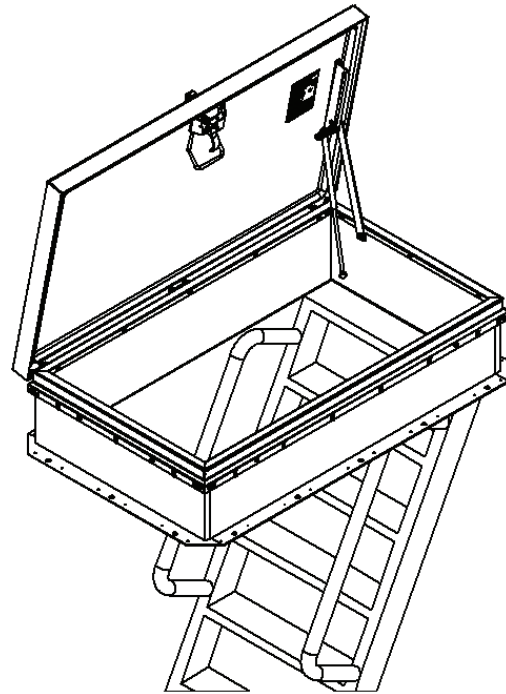
Configurable Options

Locks	24
Operations (Smoke Vent)	24
Curbs	25
Domes	25
Multiwall	25
Powder Coat	26
Anodize	27
Trinar®	27

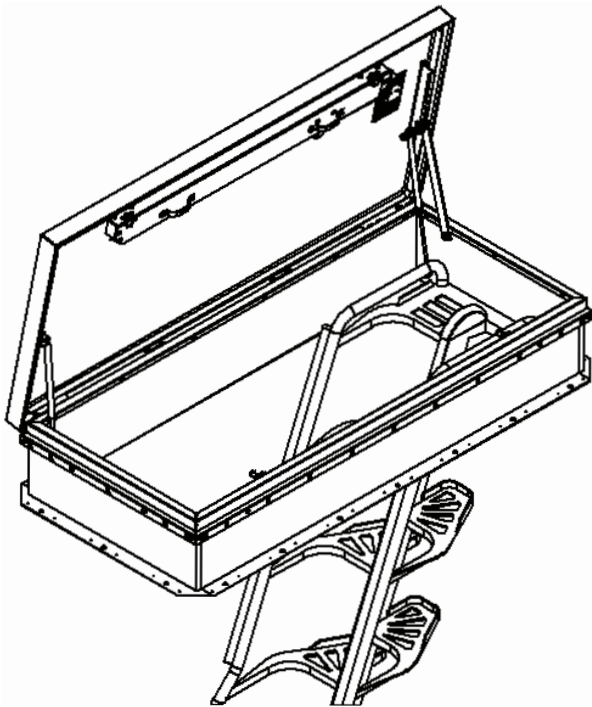
Access



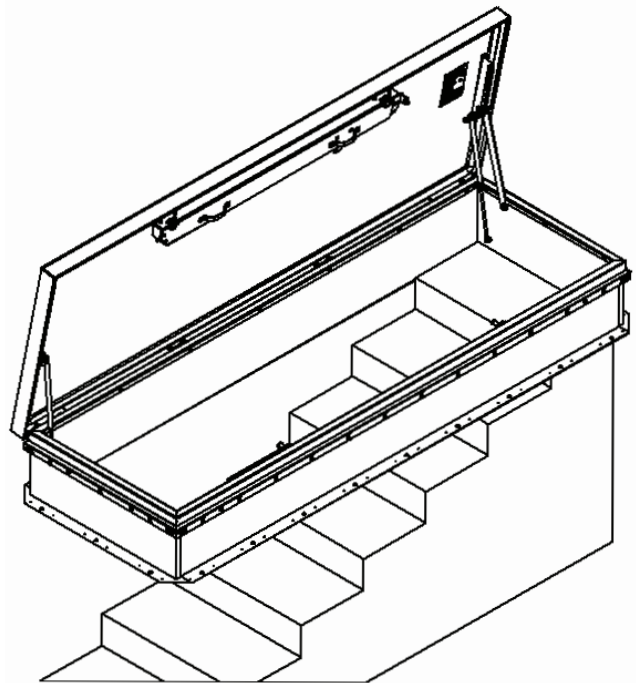
Ladder



Ship Stair



Alternating Tread Stair



Service Stair

ThermalMAX™

ROOF HATCH

The ThermalMAX Roof Hatch sets the new standard for thermally efficient roof hatches. Designed with a thermal break to keep cool-cool and hot-hot, this hatch boasts an R-20 insulation rating making it today's most energy efficient hatch.

FEATURES

THERMALLY BROKEN Designed with a thermal break to stop the transfer of heat and cold.

IECC COMPLIANCE Code C402 for commercial building envelopes requires $\geq R-5$ in skylight curbs, a gasket weather seal to minimize air leakage and a solar reflectance index ≥ 82 in climate zones 1, 2, 3.

ENHANCED INSULATION Three inch foil faced polyiso insulation provides a thermally efficient design to help maintain building envelope integrity; R-20.



DETAILS

MATERIAL 11 gauge Aluminum

FINISH Mill or powder coat

COVER Formed metal cover withstands a live load of 40psf with a max deflection of 1/150 the span

CURB Single wall curb with railing ready EZ tab counterflash and mounting flange

INSULATION 3 inch single layer foil faced polyiso in curb and cover; R-20.3

GASKET Extruded EPDM adhesive backed acoustic gasket seal, continuous around curb and cover to ensure a continuous seal

SPRING Gas spring with integrated damper for smooth, controlled lift assistance

HINGE Heavy-duty pintle hinge with stainless steel hinge pin

HOLD OPEN ARM Zinc-plated steel automatic hold open arm with red grip handle locks cover in open position

LATCH Zinc plated steel spring-type slam latch with inside and outside operating turn handles and padlock hasp provisions; 20psf wind uplift

PULL HANDLE Interior safety pull down handle, yellow powder coat, units larger than 60" utilize a two-point latch with handles

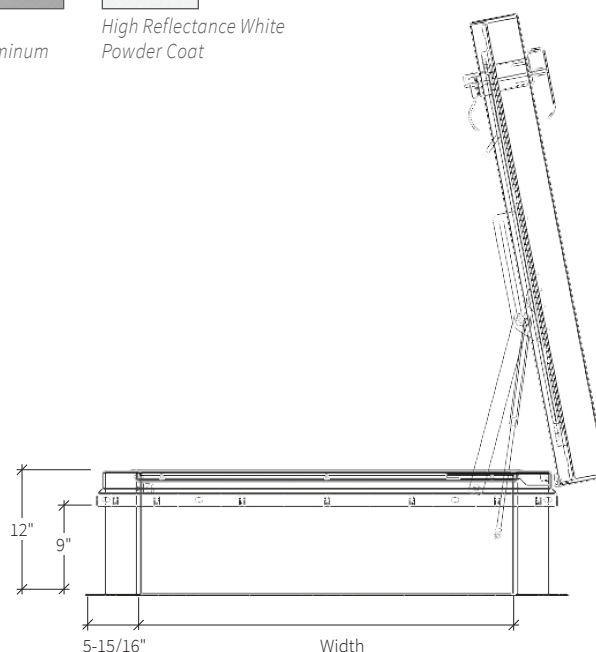
FINISHES



Mill
Aluminum



High Reflectance White
Powder Coat



STANDARD MODELS

ALUMINUM	SIZE (IN.)	DOOR	CURB	ACCESS
BRHTA36X30S1T	36 x 30	Single	Single Wall	Ladder
BRHTA36X36S1T	36 x 36	Single	Single Wall	Ladder
BRHTA48X48S1T	48 x 48	Single	Single Wall	Ladder
BRHTA30X54S1T	30 x 54	Single	Single Wall	Ship Stair or Alternating Tread
BRHTA30X96S1T	30 x 96	Single	Single Wall	Service Stair

Additional sizes and options available, call for more information.

Personnel™

SINGLE POINT LATCH ROOF HATCH

The Personnel Roof Hatch is improved to offer superior weather resistance in an easy to order stock roof hatch. The industry's leading roof hatch is customizable, sized for OSHA compliant safety railings and available in a variety of materials and finishes.

FEATURES

INDUSTRY'S BEST Tested for small and large missile impact-Class IV (TAS 201-94), Air Pressure & Water Penetration (TAS 202-94), and Cyclic Wind Pressure Loading (TAS 203-94).

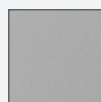
SAFETY RAILING READY Safety railings install quick and easy with predrilled counterflash, designed to meet the 42" height requirement per OSHA and IBC.

SUPERIOR POWDER-COAT FINISH The standard red oxide powder-coat finish provides outstanding corrosion resistance, superior gloss and color retention.

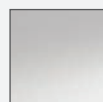
GAS SPRING OPERATION Designed for a smooth one-handed operation that compiles with OSHA safety standards, this roof hatch is easy to open and close.



FINISHES



Mill
Aluminum



2B Matte
Stainless Steel



Red Oxide
Powder Coat



High Reflectance White
Powder Coat

DETAILS

MATERIAL

- 11 gauge Aluminum, mill finish
- Steel 14 gauge galvalume, red coat
- Stainless steel not Miami-Dade or Florida approved

COVER Formed metal cover with liner, stiffened to withstand a live load of 40psf with a max deflection of 1/150 of the span

CURB Single wall curb with EZ tab counterflash and mounting flange

INSULATION 1 inch polyiso R-6 in curb, 1 inch polystyrene in cover

GASKET Extruded EPDM adhesive-backed gasket seal continuous around cover

HOLD-OPEN ARM Zinc-plated steel automatic hold open arm locks cover in open position

CERTIFICATION Miami-Dade County & Florida Product Approved

STANDARD MODELS

RED STEEL	WHITE STEEL	ALUMINUM	SIZE (IN.)	ACCESS	LATCH
BG3054	BW3054	BA3054	30 x 54	Ship Stair	Single Point
BG3630	BW3630	BA3630	36 x 30	Ladder	Single Point
BG3636	BW3636	BA3636	36 x 36	Ladder	Single Point
BG4848	BW4848	BA4848	48 x 48	Ladder	Single Point

Additional sizes and options available, call for more information.

SINGLE POINT LATCH

LATCH Zinc-plated steel latch with exterior and interior turn handles and padlock hasps.

SPRING Gas-spring with damper for smooth, controlled lift assistance

HINGE Heavy-duty pintle hinge with stainless steel hinge pin

PULL HANDLE Interior safety pull down handle, yellow powder coat

Personnel™

2-POINT LATCH ROOF HATCH



FINISHES



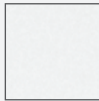
Mill
Aluminum



2B Matte
Stainless Steel



Red Oxide
Powder Coat



High Reflectance White
Powder Coat

MIAMI-DADE COUNTY
APPROVED



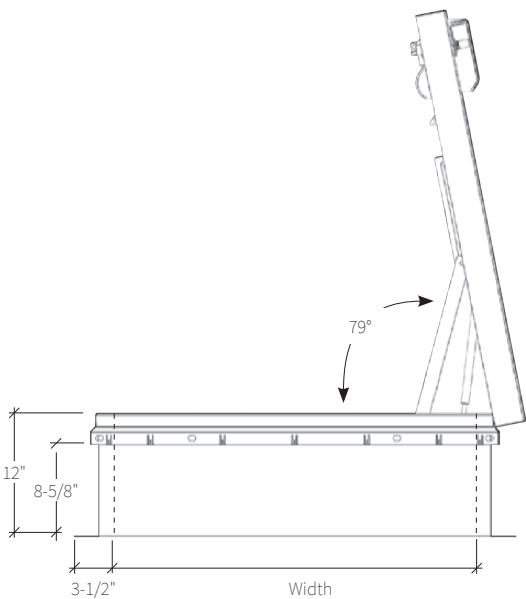
2 POINT LATCH

LATCH Zinc-plated steel latch with exterior and interior turn handles and padlock hasps

STANDARD MODELS

RED STEEL	WHITE STEEL	ALUMINUM	SIZE (IN.)	ACCESS	LATCH
BG3072	BW3072	BA3072	30 x 72	Ship Stair	2-Point
BG3096	BW3096	BA3096	30 x 96	Service Stair	2-Point
BG3696	BW3696	BA3696	36 x 96	Service Stair	2-Point

** Not approved for Miami-Dade or State of Florida
Additional sizes and options available, call for more information.*



Security

ROOF HATCH

Designed for applications with heightened security, Babcock-Davis Security Roof Hatch is constructed of heavy-duty materials and the option for security grade locks. Ideal for prisons, banks, water treatment facilities and other high security buildings.

FEATURES

SECURITY GRADE MATERIAL Deter forced entry with extra heavy-duty top security grade roof hatches. Constructed of 3/16 inch steel or 1/4 inch aluminum.

OPTIONAL LOCKS Add essential security upgrades to your rooftop access with detention or mortise locks.

OPTIONAL VIEWPORT Gain visibility with the optional bulletproof viewport on roof hatch cover. Ideal for use in prisons and wastewater treatment facilities.



DETAILS

MATERIAL

- Aluminum: 1/4 inch, mill finish
- Steel: 3/16 inch, red oxide powder coat

COVER Formed metal cover with liner, stiffened to withstand a live load of 40psf with a max deflection of 1/150 the span

CURB Single wall curb with EZ tab counterflash and mounting flange

INSULATION 1 inch polystyrene in cover, 1 inch polyiso around curb

GASKET Extruded EPDM adhesive backed gasket seal, continuous around cover

SPRING Gas-spring with damper for smooth, controlled lift assistance

HINGE Stainless steel tamper-proof

HOLD OPEN ARM Zinc-plated steel automatic hold open arm with red grip handle locks cover in open position

LATCH Zinc-plated steel latch with exterior and interior turn handles and padlock hasp

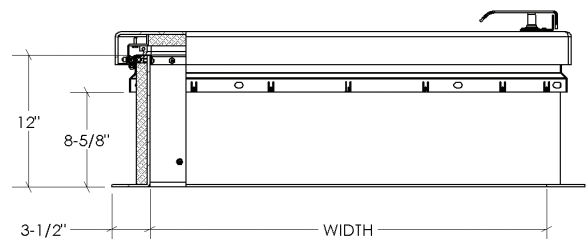
FINISHES



Mill
Aluminum



Red Oxide
Powder Coat



STANDARD MODELS

RED STEEL	ALUMINUM	STEEL + ALUMINUM	SIZE (IN.)	ACCESS	DOOR	CURB
BRHSG36X30S1T	BRHSA36X30S1T	BRHSB36X30S1T	36 x 30	Ladder	Single	Single Wall
BRHSG36X36S1T	BRHSA36X36S1T	BRHSB36X36S1T	36 x 36	Ladder	Single	Single Wall
BRHSG30X54S1T	BRHSA30X54S1T	BRHSB30X54S1T	30 x 54	Ship Stair	Single	Single Wall

Additional sizes and options available, call for more information.

SunLit™

ROOF HATCH

Providing natural daylighting, the SunLit Roof Hatch is engineered with a translucent dome cover that is ideal for use in commercial buildings, retail, schools and more.

FEATURES

POLYCARBONATE DOME Add the traditional look of a domed skylight with 1/8 inch thick UV coated polycarbonate available in clear, white or bronze colors.

OPTIONAL DOUBLE DOME Increase impact and thermal resistance with double glazed polycarbonate domes.

OPTIONAL INSULATION Add additional thermal performance with fully insulated curbs including 2 inch polyiso insulation; specify – IRD.



DETAILS

COVER Formed aluminum, 11 gauge, mill finish, metal cover with 1/8 inch clear polycarbonate, UV coated dome

CURB Single wall curb with EZ tab counterflash and mounting flange

- Aluminum: 11 gauge, mill finish
- Steel: 14 gauge galvalume, red oxide powder coat

INSULATION 1 inch fiberglass in cover, 1 inch polyiso around curb

GASKET Extruded EPDM adhesive backed gasket seal continuous around cover

SPRING Gas-spring with damper for smooth, controlled lift assistance

HINGE Zinc-plated steel tamper-proof

HOLD OPEN ARM Zinc plated steel automatic hold open arm with red vinyl grip handle locks cover in open position

LATCH Zinc plated steel latch:

- 20psf wind uplift for lengths ≤60 inch with slam latch
- 90psf wind uplift for lengths >60 inches with 2-point rotary latch

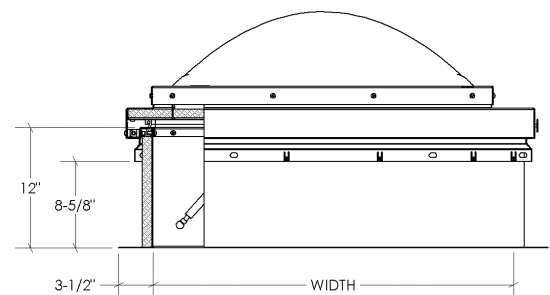
FINISHES



Mill
Aluminum



Red Oxide
Powder Coat



STANDARD MODELS

ALUMINUM	STEEL + ALUMINUM	SIZE (IN.)	ACCESS	DOOR	CURB
BRHLA36X30S1P	BRHLB36X30S1P	36 x 30	Ladder	Single	Single Wall
BRHLA36X36S1P	BRHLB36X36S1P	36 x 36	Ladder	Single	Single Wall

Additional sizes and options available, call for more information.

Equipment

HATCH

Babcock-Davis Equipment Roof Hatch is engineered to accommodate extra large equipment access through roofs. With options like curb mounting and varied curb heights Babcock-Davis is sure to meet your equipment servicing needs.

FEATURES

LARGEST CLEAR OPENING Industry's largest clear opening allows equipment to be installed and serviced through the roof of your building.

STAINLESS STEEL MATERIAL Upgrade to corrosion resistant 304 stainless steel for corrosive environments such as waste water treatment facilities and coastal areas.



DETAILS

MATERIAL

- Aluminum: 11 gauge, mill finish
- Steel: 14 gauge galvalume, powder coat
- Stainless Steel: Type 304 14 gauge, 2B matte finish

COVER Formed metal cover withstands a live load of 40psf with a max deflection of 1/150 the span

CURB Single wall curb with EZ tab counterflash and mounting flange

INSULATION 1 inch fiberglass in cover, 1 inch polyiso around curb

GASKET Extruded EPDM adhesive backed gasket seal continuous around cover

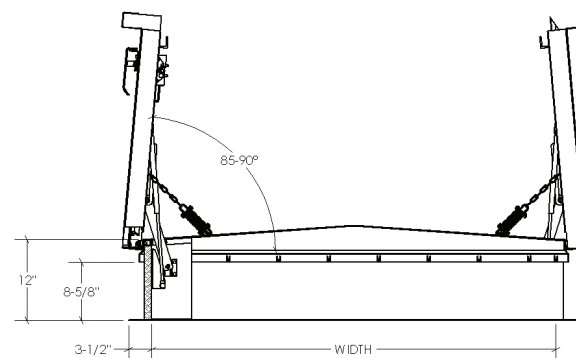
SPRING Gas-spring with damper for smooth, controlled lift assistance

HINGE Zinc-plated steel tamper-proof

HOLD OPEN ARM Zinc-plated steel automatic hold open arm with red vinyl grip handle locks cover in open position

LATCH Zinc-plated steel latch with exterior and interior turn handles and padlock hasps

FINISHES



STANDARD MODELS

RED STEEL	ALUMINUM	STAINLESS STEEL	SIZE (IN.)	DOOR	CURB
BRHEG48X48S1T	BRHEA48X48S1T	BRHES48X48S1T	48 x 48	Single	Single Wall
BRHEG60X60D1T	BRHEA60X60D1T	BRHES60X60D1T	60 x 60	Double	Single Wall
BRHEG72X72D1T	BRHEA72X72D1T	BRHES72X72D1T	72 x 72	Double	Single Wall
BRHEG60X120D1T	BRHEA60X120D1T	BRHES60X120D1T	60 x 120	Double	Single Wall

Additional sizes and options available, call for more information.

Safety Railing

ROOF HATCH FALL PROTECTION

Babcock-Davis OSHA compliant Safety Railing is ideal for new and retrofit applications. The safety railing mounts to the existing roof hatch curb counterflash without penetrating the membrane or curb.

FEATURES

EASY FIELD INSTALLATION No field cutting required as rails are cut to exact size. Easy assembly fittings and quick mounting on counterflash using a patented nut backing plate.

SELF CLOSING GATE (shown) Designed to automatically close, the gate is constructed with spring loaded hinges to protect against falls.

OPTIONAL CHAIN CLOSURE Comes with standard chain barrier with easy spring clip attachment to guard against falls. (Not OSHA compliant)



Safety Yellow Powder Coat option shown

DETAILS

MATERIAL Rails and posts, aluminum, 1-1/4 inch ID (1.66 inch OD) Schedule 40 pipe

FINISH Powder Coat, Safety Yellow or Mill

FITTINGS Cast aluminum alloy with set screw hold

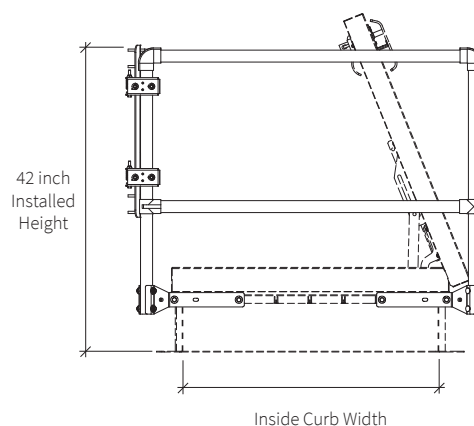
MOUNTING BRACKETS 3/16 inch steel, zinc-plated with nut backing plate

HARDWARE Hex head bolts 3/8 - 16 by 3/4 inch zinc-plated steel

EXIT Must be kept closed when roof hatch door is open

- Self-Closing Gate: Aluminum, 1-1/4 inch ID (1.66 inch OD) Schedule 40 pipe, self-closing with coil spring

COMPLIANCE OSHA 29 CFR 1910.29, 1910.28, 1910.23, 1926.502 and 1926.501



STANDARD MODELS

GATE CLOSURE			
YELLOW	MILL	SIZE (IN.)	ACCESS
SRCA36X30FG	SRCA36X30FG	36 x 30	Front
SRCA36X36SG	SRCA36X36SG	36 x 36	Front
SRCA48X48FG	SRCA48X48FG	48 x 48	Front
SRCA30X54SG	SRCA30X54SG	30 x 54	Side
SRCA30X72SG	SRCA30X72SG	30 x 72	Side
SRCA30X96SG	SRCA30X96SG	30 x 96	Side

Additional sizes available, call for more information.

THERMALMAX™ MODELS

GATE CLOSURE			
YELLOW	MILL	SIZE (IN.)	ACCESS
SRBAY36X30FG	SRBA36X30FG	36 x 30	Front
SRBAY36X36FG	SRBA36X36SG	36 x 36	Front
SRBAY48X48FG	SRBA48X48FG	48 x 48	Front
SRBAY30X54SG	SRBA30X54SG	30 x 54	Side
SRBAY30X96SG	SRBA30X96SG	30 x 96	Side

Ladder Safety Post

ROOF HATCH FALL PROTECTION

The Safety Post is designed to extend 42 inches above a landing platform to aid safe ladder access through a roof hatch. The spring assisted telescoping design mounts to the top two rungs of a fixed vertical ladder.

DETAILS

MATERIAL 1-1/2 inch by 1-1/2 inch by 1/8 inch high strength square tubing with a pull-up loop provided at the upper end to facilitate raising of post.

- Steel: yellow powder coat paint or hot dip galvanized
- Stainless Steel: Type 304, mill
- Aluminum: Mill

BALANCING SPRING Stainless steel constant force spring

HARDWARE Type 316 stainless steel



STANDARD MODELS

MODEL	MATERIAL	FINISH
BSPY	Steel	Powder Coat, Yellow
BSPG	Steel	Hot Dip Galvanized
BSPA	Aluminum	Mill
BSPS	Stainless Steel	Mill

Safety Grab Bar

ROOF HATCH FALL PROTECTION

The Safety Grab Bar is engineered to provide safe access through roof hatches. The grab bar mounts to a corner section through the curb counterflashing.

DETAILS

MATERIAL Rails and posts, aluminum, 1-1/4 inch ID (1.66 inch OD) Schedule 40 pipe

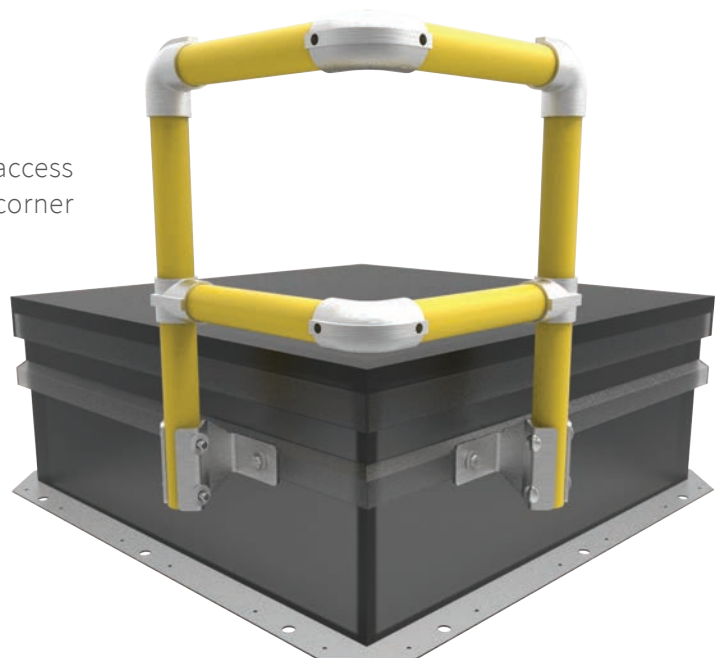
FITTINGS Cast aluminum alloy with set screw hold

MOUNTING BRACKETS 3/16 inch steel, zinc-plated with nut backing plate

HARDWARE Hex head bolts 3/8 inch - 16 by 3/4 inch zinc-plated steel

STANDARD MODELS

MODEL	MATERIAL	FINISH
BSGBAY	Aluminum	Powder Coat, Safety Yellow
BSGBA	Aluminum	Mill



Safety Yellow Powder Coat option shown

SafeMAX™ (Single Door)

SMOKE VENT

Babcock-Davis Single Door SafeMAX Smoke Vent, engineered with a metal cover, is ideal for factory, storage and warehouse occupancies, and hoistways. The single door smoke vent offers the largest effective vent area.

FEATURES

GREATER EFFECTIVE VENT AREA Reduce the number of smoke vents required on the roof with the industry's largest 48 x 96 single door smoke vent.

OPTIONAL LOUVERED CURB Add additional ventilation with louvered curbs. Ideal for use in elevator shafts and hoistways.



DETAILS

MATERIAL

- Aluminum: 11 gauge, mill finish
- Steel: 14 gauge galvanized, high reflectance white powder coat

COVER Formed metal cover with liner, internally stiffened to withstand a live load of 40psf

CURB Single wall curb with EZ tab counterflash and mounting flange

INSULATION 1 inch Polyiso R-6 in cover and around curb

GASKET Extruded EPDM adhesive backed gasket seal, continuous around cover

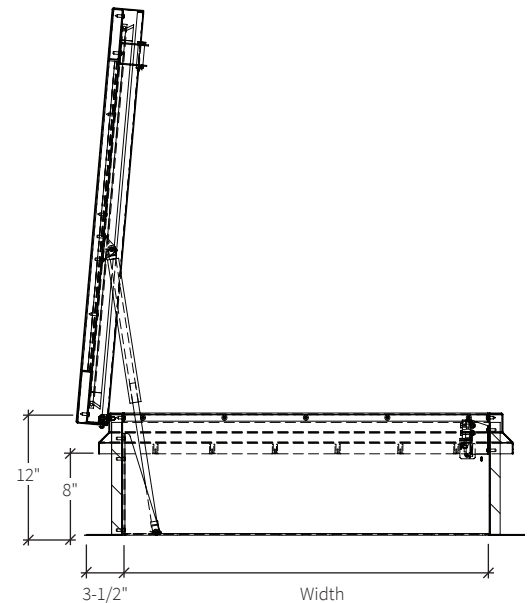
HINGE Heavy-duty pintle hinge with stainless steel hinge pins

SPRING Gas spring with damper opens cover against 10psf snow load

HOLD OPEN ARM Zinc-plated steel automatic hold open arm locks cover in open position

LATCH Zinc-plated steel rotary latch designed to hold covers closed against 30psf wind uplift. Opens manually by external and internal pull cables. Opens automatically with a fusible link at standard temperature 165°F

CERTIFICATIONS UL 793 Listed, FM 4430 Approved for 360° fuseable link



ORDER GUIDE

BASE	MATERIAL	WIDTH	X	LENGTH	DOOR	CURB	OPENING	LINK TEMP (°F)	CLOSING	—	OPTIONS
BSVS			X							—	
	A Aluminum Curb & Cover	Standard Sizes (W x L)			S Single Door	1 Single Wall	N No Electrical	165 350	R Rooftop Close		SFM FM Labeled OP1 Door Position Sensor B__ Burglar Bars
	B Galvanneal Curb / Aluminum Cover	30" x 30"	36" x 30"	36" x 36"		2 Double Wall	L 24VDC/24VAC	212 360			
	W Galvanneal Curb & Cover	48" x 48"	48" x 72"	48" x 96"		3 Curb Mount	H 110VAC / 240VAC	280 450			
		<i>Additional size options also available.</i>									

SafeMAX™ (Double + Quad Door)

SMOKE VENT

The standard Double and Quad Door SafeMAX Smoke Vent, engineered with metal covers, is ideal for factory, storage and warehouse occupancies.

FEATURES

SECURE CLOSURE The reliable rotary latch has been third party independently tested to hold smoke vent covers closed against a 135psf wind uplift.

OPTIONAL 2 INCH INSULATION Optimize energy efficiency and upgrade thermal insulation to R-12 with 2 inch of Polyiso in the cover and curb while maintaining UL Listing.



DETAILS

MATERIAL

- Aluminum: 11 gauge, mill finish
- Steel: 14 gauge galvalume, high reflectance white powder coat

COVER Formed metal cover with liner, internally stiffened to withstand a live load of 40psf

CURB Single wall curb with EZ tab counterflash and mounting flange

INSULATION 1 inch Polyiso R-6 in cover and around curb

GASKET Extruded EPDM adhesive backed gasket seal, continuous around cover

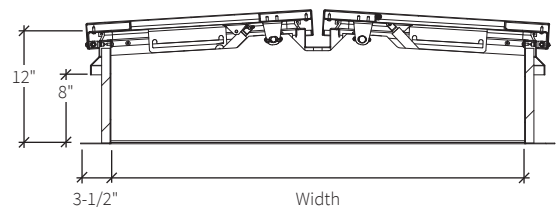
HINGE Heavy-duty pintle hinge with stainless steel hinge pins

SPRING Gas spring with damper opens cover against 10psf snow load

HOLD OPEN ARM Zinc-plated steel automatic hold open arm locks cover in open position

LATCH Zinc-plated steel rotary latch designed to hold covers closed against 90psf wind uplift. Opens manually by external and internal pull cables. Opens automatically with a fusible link at standard temperature 165°F.

CERTIFICATIONS UL 793 Listed, FM 4430 Approved for 360° fuseable link



ORDER GUIDE

BASE	MATERIAL	WIDTH	X	LENGTH	DOOR	CURB	OPENING	LINK TEMP (°F)	CLOSING	—	HOLD OPTIONS
BSVS			X							—	
	A Aluminum Curb & Cover	Standard Sizes (W x L)			D Double Door Q Quad Door	1 Single Wall 2 Double Wall 3 Curb Mount	N No Electrical L 24VDC/24VAC H 110VAC / 240VAC A Linear Actuator*	165 350 212 360 280 450	R Rooftop Close W Manual Winch L Linear Actuator*		SFM FM Labeled OP1 Door Position Sensor B Burglar Bars
	B Galvalume Curb / Aluminum Cover	48" x 48"	48" x 72"	48" x 96"							
	W Galvalume Curb & Cover	60" x 60"	60" x 96"	60" x 120"							
		72" x 72"	72" x 96"								
		Additional size options also available.									
										*Voids UL	

LightMAX™ (Single Door)

SMOKE VENT

Providing natural daylighting, the Single Door LightMAX Smoke Vent is engineered with a translucent cover. This smoke vent includes a clear or color tinted multiwall panel or optional domes that are ideal for use in factory, storage and warehouse commercial buildings.

FEATURES

MULTIWALL LIGHT TRANSMISSION Add optional color panels (pg. 25) to change natural daylighting characteristics.

OPTIONAL DOME Add the traditional look of a domed skylight with 1/8 inch thick UV coated polycarbonate available in clear, white or bronze colors.



DETAILS

COVER Extruded aluminum frame, 11 gauge, mill finish, with 5/8 inch 3 layer structural multiwall R-3 in white polycarbonate. Cover withstands a live load of 40psf.

CURB Single wall curb with EZ tab counterflash and mounting flange

- Aluminum: 11 gauge, mill finish
- Steel: 14 gauge galvalneal, high reflectance white powder coat

INSULATION 1 inch Polyiso R-6 around curb perimeter

GASKET Extruded EPDM adhesive backed gasket seal, continuous around cover

HINGE Heavy-duty pintle hinge with stainless steel hinge pin

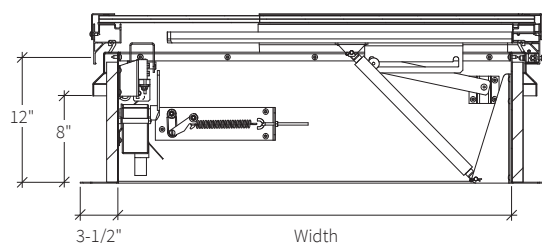
SPRING Gas spring damper opens cover against 10psf snow load

HOLD OPEN ARM Zinc-plated steel automatic hold open arm locks cover in open position

LATCH Zinc-plated steel rotary latch designed to hold covers

closed against 30psf wind uplift. Opens manually by external and internal pull cables.

CERTIFICATIONS UL 793 Listed



ORDER GUIDE

BASE	MATERIAL	WIDTH	X	LENGTH	DOOR	CURB	OPENING	LINK TEMP (°F)	CLOSING	—	OPTIONS
BSVL			X							—	
	A Aluminum Curb & Cover	Standard Sizes (W x L)			S Single Door	1 Single Wall	N No Electrical	165 350	R Rooftop Close W Manual Winch		Dome, Polycarb. LPW White LPC Clear Double Dome, Polycarb. LPWW White/White LPCW Clear/White Multiwall LMC Clear LMZ Bronze LMB Blue LMG Green
		30" x 30"	36" x 30"	36" x 36"		2 Double Wall	L 24VDC/24VAC	212 360			
	B Galvalneal Curb / Aluminum Cover	48" x 48"	48" x 72"	48" x 96"		3 Curb Mount	H 110VAC / 240VAC	280 450			
		Additional size options also available.									

LightMAX™ (Double + Quad Door)

SMOKE VENT

The Double and Quad Door LightMAX Smoke Vent is engineered with translucent covers using polycarbonate for the added sustainability benefit of natural daylighting. With options like color panels, and electrical operation, Babcock-Davis is sure to meet your building sustainability and fire and life safety needs.



FEATURES

MULTIWALL LIGHT TRANSMISSION Add optional color panels (pg. 25) to change natural daylighting characteristics.

OPTIONAL DOME Add the traditional look of a domed skylight with 1/8 inch thick UV coated polycarbonate available in clear, white or bronze colors.

DETAILS

COVER Extruded aluminum frame, 11 gauge, mill finish, with 5/8 inch 3 layer structural multiwall R-3 in white polycarbonate. Cover withstands a live load of 40psf.

CURB Single wall curb with EZ tab counterflash and mounting flange

- Aluminum: 11 gauge, mill finish
- Steel: 14 gauge galvalume, high reflectance white powder coat

INSULATION 1 inch Polyiso R-6 around curb perimeter

GASKET Extruded EPDM adhesive backed gasket seal, continuous around cover

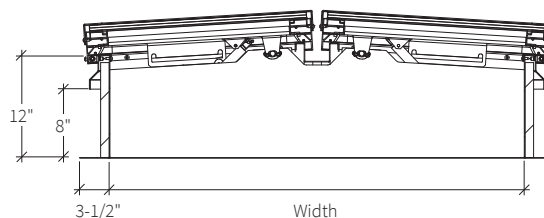
HINGE Heavy-duty pintle hing with stainless steel hinge pin

SPRING Gas spring damper opens cover against 10psf snow load

HOLD OPEN ARM Zinc-plated steel automatic hold open arm locks cover in open position

LATCH Zinc-plated steel rotary latch designed to hold covers closed against 90psf wind uplift. Opens manually by external and internal pull cables.

CERTIFICATIONS UL 793 Listed



ORDER GUIDE

BASE	MATERIAL	WIDTH	X	LENGTH	DOOR	CURB	OPENING	LINK TEMP (°F)	CLOSING	—	OPTIONS
BSVL			X							—	
A	Aluminum Curb & Cover	Standard Sizes (W x L)			D Double Door	1 Single Wall	N No Electrical	165 350	R Rooftop Close		Dome, Polycarb. LPW White LPC Clear
B	Galvalume Curb / Aluminum Cover	48" x 48" 48" x 72" 48" x 96" 60" x 60" 60" x 96" 60" x 120" 72" x 72" 72" x 96"			Q Quad Door	2 Double Wall	L 24VDC/24VAC	212 360	W Manual Winch		Double Dome, Polycarb. LPWW White/White LPCW Clear/White
						3 Curb Mount	H 110VAC / 240VAC	280 450			Multiwall LMC Clear LMZ Bronze LMB Blue LMG Green
Additional size options also available.											

AcousticMAX™

SMOKE VENT

Block the intrusion of exterior environmental noise while providing safety and security with the industry's best automatic Acoustical Smoke Vent. Perfect for theaters and performing arts centers; every detail is designed with precision.

FEATURES

SUPERIOR SOUND CONTROL Industry's best sound ratings designed to keep out unwanted noises ensuring acoustical integrity when all you want to hear is the performance

PREFINISHED BLACK INTERIOR Eliminate field painting hassle with the prefinished interior that seamlessly integrates into the ceiling



DETAILS

SOUND RATING(S) Independent third party tested to ASTM

E90 and ASTM E1332

- BSVZ: STC 50 - OITC 47
- ISO 140-18 Rainfall 36.7 dB
- BSVY: STC 50 - OITC 39

MATERIAL

- BSVZ 12 gauge galvaneal steel; powder coat
- BSVY 14 gauge galvaneal steel; powder coat

FINISH High Reflectance White exterior cover with black interior liner and black curb

COVER Metal with liner, withstands a live load of 40psf with a max deflection of 1/150 the span

CURB Double wall curb with EZ tab counterflash and mounting flange

INSULATION Mineral wool and sound mat in cover and curb

- BSVZ: Total R-16.8
- BSVY: Total R-12.6

GASKET Extruded EPDM adhesive backed gasket seals

HINGE Stainless steel heavy duty pintle hinge

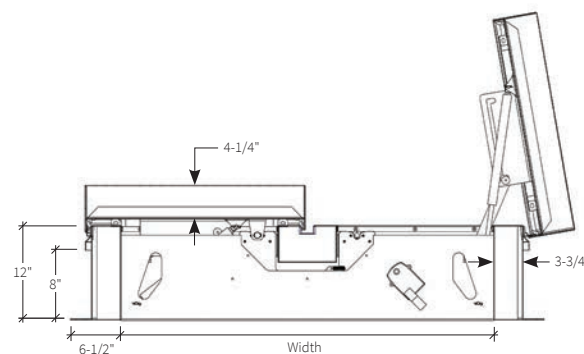
SPRING Gas spring with damper opens cover against 10psf snow load

HOLD OPEN ARM Zinc-plated steel automatic hold open arm locks cover in open position

LATCH Zinc-plated steel rotary latch designed to hold covers closed against 90psf wind uplift

OPERATION Opens automatically with a fusible link and manual pull handles

CERTIFICATIONS UL 793 Listed, FM 4430
Approved for 360° fuseable link,
and IBC1207 Compliant



ORDER GUIDE

BASE	RATING	MATERIAL	WIDTH	X	LENGTH	DOOR	CURB	OPENING	LINK TEMP (°F)		CLOSING	—	OPTIONS
BSV		G		X								—	
	Z STC 50 - OITC 47	G Galvaneal Steel	Standard Sizes (W x L)			D Double Door	2 Double Wall	N No Electrical	165	350	R Rooftop Close		SFM FM Labeled
			48" x 48"	48" x 72"	48" x 96"	Q Quad Door	3 Curb Mount	L 24VDC/24VAC	212	360	W Manual Winch		OP1 Door Position Sensor
	Y STC 50 - OITC 39		60" x 60"	60" x 96"	60" x 120"	72" x 72"	72" x 96"	H 110VAC / 240VAC	280	450	L Linear Actuator*		B__ Burglar Bars
			Additional size options also available.					A Linear Actuator*	*Voids UL				

Safety Railing

SMOKE VENT FALL PROTECTION

Babcock-Davis OSHA compliant Safety Railing is ideal for new and retrofit applications. The safety railing mounts to the existing smoke vent curb counterflash without penetrating the membrane or curb.

FEATURES

FALL PROTECTION In accordance with OSHA regulations, the safety railing is engineered to guard smoke vent openings to protect against falls.

EASY FIELD INSTALLATION No field cutting required as rails cut to exact size. Easy assembly fittings and quick mounting on counterflash through curb.



Mill Finish Option Shown

DETAILS

MATERIAL Rails and posts, aluminum, 1-1/4 inch ID (1.66 inch) Schedule 40 pipe

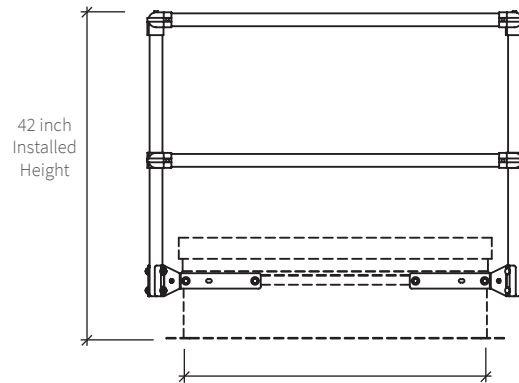
FINISH Powder Coat, Safety Yellow or Mill

FITTINGS Cast aluminum alloy with set screw hold

MOUNTING BRACKETS 3/16 inch steel, zinc plated with nut backing plate

HARDWARE Hex head bolts 3/8 inch - 16 x 3/4 inch zinc-plated steel

COMPLIANCE OSHA 29 CFR 1910.28 and 1910.29



ORDER GUIDE

4-SIDED

MODEL	SIZE (IN.)
SRVAY36X30NN	36 x 30
SRVAY36X36NN	36 x 36
SRVAY48X48NN	48 x 48
SRVAY48X96NN	48 x 96
SRVAY60X96NN	60 x 96
SRVAY60X120NN	60 x 120
SRVAY60X144NN	60 x 144
SRVAY72X144NN	72 x 144

2-SIDED

MODEL	SIZE (IN.)
SRVAY48XNNTN	48
SRVAY60XNNTN	60
SRVAY72XNNTN	72

Burglar Bars

SMOKE VENT FALL PROTECTION

Babcock-Davis Burglar Bars, a smoke vent accessory, are designed for security and safety and to prevent unauthorized entry. Engineered for each smoke vent, these bars are available on new installations as a factory installed option.

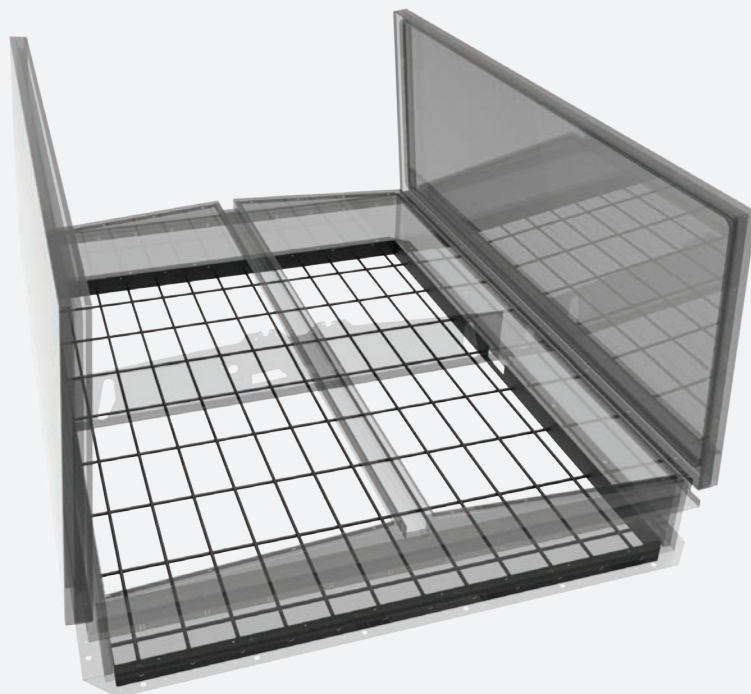
DETAILS

MATERIAL Steel, 1/2 inch or 3/4 inch diameter

SPACING 6 inch by 6 inch, 6 inch by 12 inch or custom

ORDER GUIDE

MODEL	DIAMETER	SPACING
B1A	1/2"	6" x 12"
B1B	1/2"	6" x 6"
B2A	3/4"	6" x 12"
B2B	3/4"	6" x 6"



Screen

SMOKE VENT FALL PROTECTION

The Fall Protection Screen, a smoke vent safety product, is designed to aid in fall protection. This sturdy screen, spaced 4 inch apart with fully welded intersections is available on new installations as a factory install option on each smoke vent. Third party tested with a drop test of 400 pounds of 30 inch diameter sandbag from 42 inches.

DETAILS

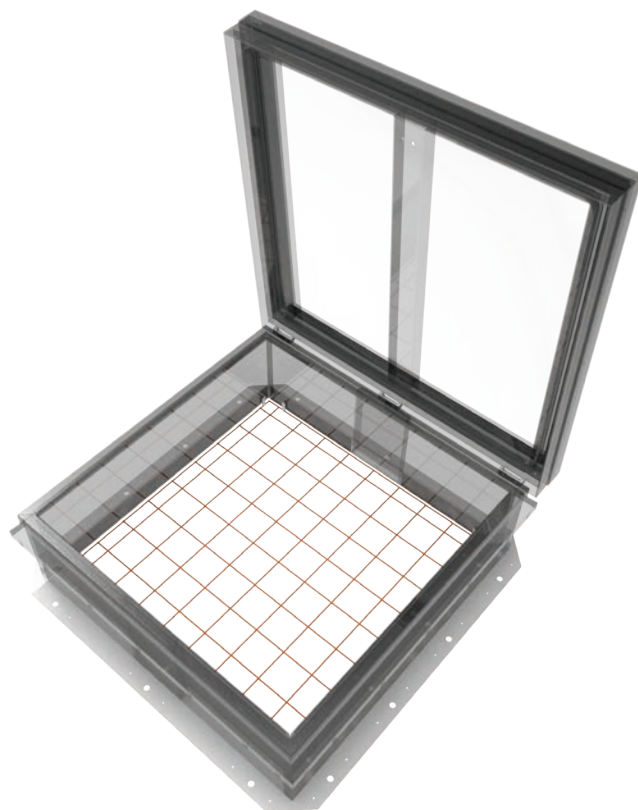
MATERIAL Steel, 0.163 inch diameter

SPACING 4 inch by 4 inch

COMPLIANCE OSHA 1926.502c and 1910.28

ORDER GUIDE

MODEL	DIAMETER	SPACING
B3C	0.163"	4" x 4"



Weighted Base

GUARDRAIL FALL PROTECTION

The OSHA compliant portable railing system is designed to keep people safe while working on rooftops and other structures. No need for tie-off points and expensive safety equipment.

FEATURES

PORTABLE BASE The weighted base is designed to be portable and installed where permanent mounting is not an option

EASY INSTALLATION The posts and rails are easy to assemble and install.

COORDINATING COLORS The system comes with a standard powder coat finish that is available in a wide range of colors to match your building's exterior.



DETAILS

MATERIALS

- Weighted Base and Post Assembly: Steel, 1-1/4 inch ID (1.66 inch OD) Schedule 40 pipe
- Horizontal and Corner Rails: 1-5/8 inch by .065 inch Steel

FINISH Powder Coat

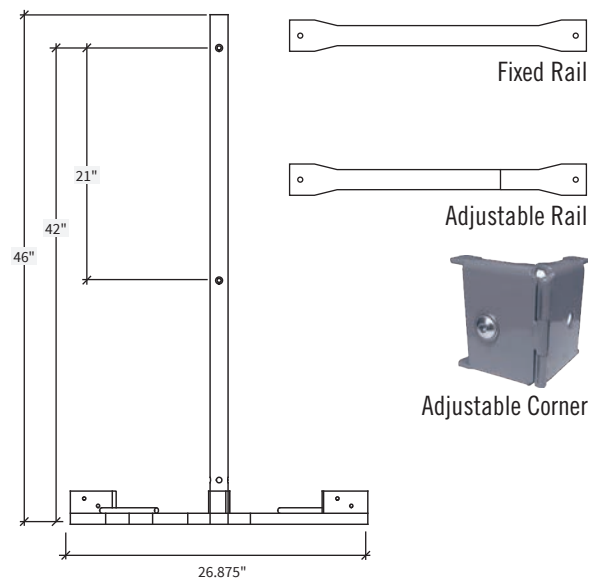
RAIL FASTENERS 3/8 inch - 16 by 1 inch zinc-plated steel

COMPLIANCE OSHA 29 CFR 1910.28 and 1910.29

MODELS

MODEL	DESCRIPTION	DIMENSION	MATERIAL + FINISH
BGR-WBP-ASM-RN	Weighted Base and Post	26.875" x 46"	Steel, Powder Coat
BGR-WBPR-004-RN	Fixed Rail*	4'	Steel Powder Coat
BGR-WBPR-005-RN	Fixed Rail*	5'	Steel Powder Coat
BGR-WBPR-008-RN	Fixed Rail*	8'	Steel Powder Coat
BGR-WBPR-010-RN	Fixed Rail*	9'- 10"	Steel Powder Coat
BGR-WBPR-ADJ-043-RN	Adjustable Rail*	2'-5" to 3'-9"	Steel Powder Coat
BGR-WBPR-ADJ-070-RN	Adjustable Rail*	3'-9" to 5'-10"	Steel Powder Coat
BGR-WBPR-ADJ-120-RN	Adjustable Rail*	5'-10" to 10'	Steel Powder Coat
BGR-WB-AC	Adjustable Corner*		Steel Powder Coat

*Note: Rails and corners are sold in sets of 2. Rails include 2 rails, 1 post and weighted base. When ordering, please be sure to include 1 additional weighted base.



Perimeter

GUARDRAIL FALL PROTECTION

The OSHA compliant Permanent Guardrail system's unique bracket installs under the drip edge, coping cap, gravel stop or gutter system without penetrating the roofing system and allows for retro fit installations.

FEATURES

PERMANENT MOUNT The edge mounted guardrail system does not penetrate the roof membrane and installs under the coping and roof flashing.

EASY INSTALLATION The posts and rails are easy to assemble and install.

COORDINATING COLORS The system comes with a standard powder coat finish that is available in a wide range of colors to match your building's exterior.



DETAILS

MATERIALS

- Post and Bracket Assembly: Steel, 1-1/4 inch ID (1.66 inch OD) Schedule 40 pipe
- Horizontal and Corner Rails: 1-5/8 inch by .065 inch Steel

FINISH Powder Coat

STRUCTURAL FASTENERS

- Wood: RSS structural screws
- Concrete: Caliburn PH concrete pan head screw

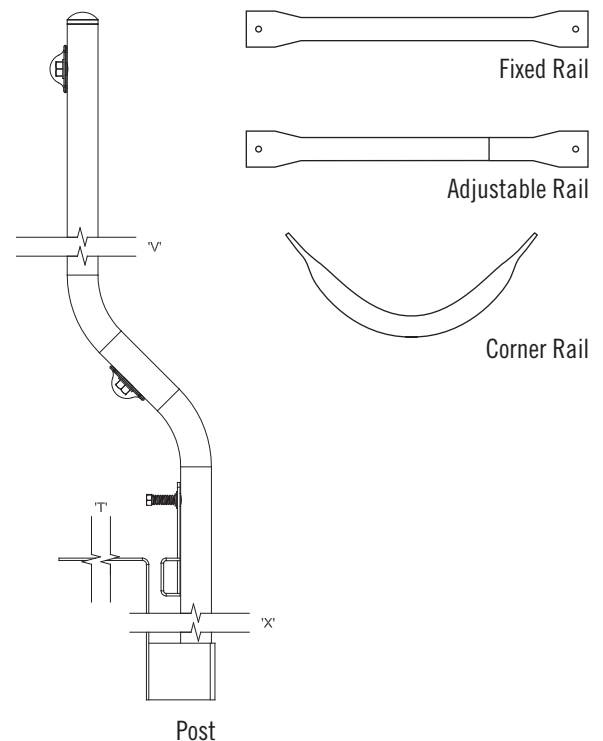
RAIL FASTENERS 3/8 inch - 16 x 1 inch zinc-plated steel

COMPLIANCE OSHA 29 CFR 1910.28 and 1910.29

STANDARD MODELS

MODEL	DESCRIPTION	DIMENSION	MATERIAL + FINISH
BFP-GRPLG	Edge Mount Post	42"	Steel, Powder Coat
BFP-GRF60	Fixed Rail*	5'	Steel, Powder Coat
BFP-GRF96	Fixed Rail*	8'	Steel, Powder Coat
BFP-GRF118	Fixed Rail*	9'- 10"	Steel, Powder Coat
BFP-GRA43	Adjustable Rail*	2'-5" to 3'-9"	Steel, Powder Coat
BFP-GRA70	Adjustable Rail*	3'-9" to 5'-10"	Steel, Powder Coat
BFP-GRA120	Adjustable Rail*	5'-10" to 10'	Steel, Powder Coat
BFP-GRC12	Corner Rail*	12"	Steel, Powder Coat

*Note: Rails and corners are sold in sets of 2.



Exterior

ACCESS DOOR

The Babcock-Davis Exterior Access Door provides efficient access from the exterior of your building without compromising security or weather resistance.

FEATURES

COMPATIBLE WITH BUILDING KEY With the mortise lock prep option, you can match the mortise cylinder to that of your building's other access points.

TEMPERATURE CONTROL With 1.6 inch polyurethane insulation, the Babcock-Davis Exterior Door is constructed to protect your building from the harshest climates.

AIR + WATER PENETRATION TEST Independent lab testing for air leakage per ASTM E 283 and water leakage per ASTM E 331-00 assures the best protection against the elements.



DETAILS

DOOR 24 gauge Steel

FRAME 0.080 inch 6063-T5 Extruded Aluminum

SIZE

- Min: 12 inches by 12 inches
- Max: 48 inches by 60 inches

INSTALLATION Ceiling or Wall

FLANGE Exposed or Plaster/Stucco Bead

HINGE Stainless Steel Continuous Piano

FINISH

- Door: Paint Grip Finish
- Frame: Mill

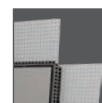
INSULATION 1.7 inch Polyurethane; R-11

GASKETING EPDM Self-Adhesive, Continuous

FLANGES



1 inch
Flange



Plaster/Stucco
Bead

LATCHES



Non-Locking
Handle



Screwdriver
Cam Latch



Locking
Handle



Mortise
Lock Prep

ORDER GUIDE

BASE	FLANGE	LATCH	WIDTH	X	LENGTH	OPTIONS
BX				X		
	T 1 inch Flange P Plaster/Stucco bead	A Non-Locking Handle C Screwdriver Cam Latch L Locking Handle M Mortise Lock (1-1/8") Prep	Standard Sizes (W x L) 12" x 12" 20" x 30" 24" x 36" 16" x 16" 24" x 24" 36" x 36" 18" x 18" 24" x 30"			A Aluminum Door C Drip Cap P Padlock Hasp S Type 304 Stainless Steel

Rough opening is door size. Additional sizes available, call for more information.

Coastal Zone

EXTERIOR ACCESS DOOR

Babcock-Davis Coastal Zone Exterior Access Door is the industry's only high velocity and impact tested door. With a design pressure of +/- 80psf, this door is sure to withstand mother nature's toughest storms.

FEATURES

IMPACT, AIR + WIND PRESSURE TESTED Independent lab tested to TAS 201, 202 and 203 assures the best protection against the harshest elements.

TEMPERATURE CONTROL With 1.6 inches of closed cell polyurethane insulation, the Babcock-Davis Coastal Zone Exterior Door delivers a R-11 thermal value.

CUSTOM SIZES Available in 1/4 inch increments from 18 inches by 18 inches to 36 inches by 48 inches maximum.

COMPLIANCE Florida Product Approval FL22309-R2.



DETAILS

DOOR 24 gauge Steel

FRAME 0.080 inch 6063-T5 Extruded Aluminum

SIZE

- Min: 18 inches by 18 inches
- Max: 36 inches by 48 inches

INSTALLATION Wall

FLANGE Exposed

HINGE Stainless Steel Continuous Piano

FINISH

- Door: Paint Grip Finish
- Frame: Mill

INSULATION 1.7 inch Polyurethane; R-11

GASKETING EPDM Self-Adhesive, Continuous

COMPLIANCE Florida Product Approval FL22309-R2

FLANGES



1 inch
Flange

LATCHES



Locking
Handle



Non-Locking
Handle

ORDER GUIDE

BASE	LATCH	WIDTH	X	LENGTH	OPTIONS
BXT			X		-H
	A Non-Locking Handle	Standard Sizes (W x L)			C Drip cap
	L Locking Handle	18" x 18"	24" x 30"		S Type 304 Stainless Steel Door
		20" x 30"	24" x 36"		
		24" x 24"	36" x 36"		

Rough opening is door size. Additional sizes available, call for more information.

Locks *(Roof Hatch)*



Detention Lock



Mortise Operated
Deadbolt

Additional locks and options available, call 1.888.412.3726 for more information.

MODEL	TYPE	BRAND	DESCRIPTION	LOCK ACCESS
D11	Detention	Brinks 7016	Keyed Lock	Interior + Exterior
D5A	Detention	Southern Steel 1010AM	Prep Only	Interior + Exterior
D2A	Detention	Southern Steel 1010A	Prep Only	Interior Only
D12	Detention	Brinks 7016	Keyed Lock	Interior Only
MS1	Mortise	Schlage Cylinder/Deadbolt	Keyed Lock	Interior + Exterior
MS2	Mortise	Schlage Cylinder/Deadbolt	Keyed Lock	Interior Only
MB4	Mortise	Best Cylinder/Schlage Deadbolt	Non-Keyed w/Plastic Core	Interior + Exterior

Operations *(Smoke Vent)*

OPENING



Fusible Link



Electrical
H - 110/120
L - 24



Pull Handle
(External & Internal)

CLOSING



Rooftop Close
R



Manual Winch
W



Linear Actuator
L

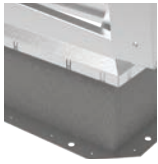
SECURITY



Door Position
Sensor OP1

Note: Also available on Roof Hatches

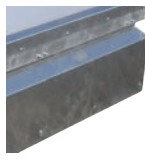
Curbs



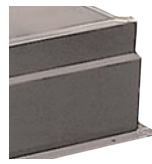
Single Wall
1



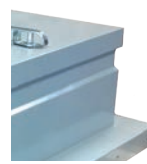
Double Wall
2



Curb Mount
3



No Counterflash
4

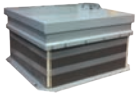


Apron Mount
5



1-1/2" Curb Mount
6

CURB HEIGHT



6 inch - 48 inch
H6 - H48

PITCH CORRECTION

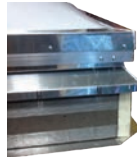


Match Roof Pitch
P__

INSULATION



1 inch Polyiso
IPP



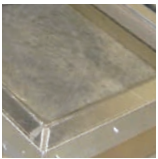
2 inch Polyiso
IRR

VENTILATION

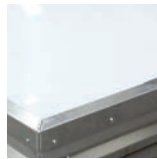


Louvered Curb
V33

Domes (Roof Hatch + Smoke Vent)



Clear
(Standard)



White
LPW



Bronze
LPZ

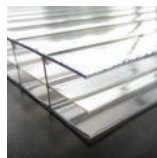
COLOR	GLAZING	LIGHT TRANSMISSION	SOLAR FACTOR	R-VALUE
Clear	Single	92%	85%	1.25
White	Single	56%	56%	1.25
Bronze	Single	27%	35%	1.25
Clear/Clear	Double	92%	85%	2.0
Clear/White	Double	56%	56%	2.0

Note: Clear single glazing is the standard option, other options have additional charges and may require longer lead times.

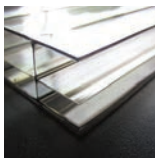
Multiwall (Smoke Vent)



White
(Standard)



Clear
LMC



Bronze
LMZ

COLOR	LIGHT TRANSMISSION	SOLAR FACTOR	SHADING COEFFICIENT
Clear	74%	75%	0.86
White	52%	63%	0.72
Bronze	37%	57%	0.65

Note: White is the standard color, all other colors have additional charges and may require longer lead times.

Powder Coat

FINISH OPTION

Babcock-Davis polyester based powder coatings demonstrate superior gloss and color retention in a variety of outdoor environments. Powder coat provides outstanding corrosion resistance and exhibits excellent mechanical properties.

APPLICATION Steel or Aluminum

WARRANTY 5 year

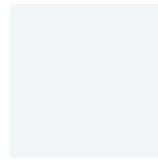
NOTE Red Oxide and High Reflectance White are the base colors of Roof Hatches and Smoke Vents, all other colors have additional charges and may require longer lead times.

Custom colors available, call 888.412.3726 for more information.

STOCK COLORS



Red Oxide
FP2



High Reflectance
White FP44

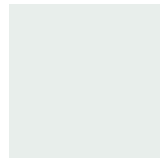


ANSI 70 Gray
FP1

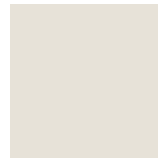


Safety Yellow
FP48

STANDARD COLORS *Readily available, but not stocked by Babcock-Davis.*



Coastal White
FP68



Bone White
FP3



Sandstone
FP5



Sierra Tan
FP8



Colonial Red
FP20



Dark Bronze
FP14



Charcoal Gray
FP7



Super Black
FP4

SPECIAL ORDER *Common industry colors, special order.*



Fine Ivory
FP13



Seawolf
FP15



Tan
FP17



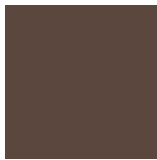
Slate Gray
FP6



River Rouge
FP21



Brick Red
FP19



Brown
FP18



Military Blue
FP10



Arcadia Green
FP23



Hemlock Green
FP24



Forest Green
FP25



Teal
FP22

This color chart is for reference only and is not to be used for final color / material matching. Babcock-Davis is not responsible or liable for color matches made with this chart.

Anodize

FINISH OPTION

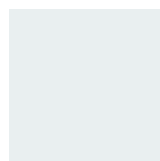
Protective and decorative anodizing applied to aluminum creates a corrosion resistant finish.

The clear finish (FA1) uses sulfuric Class II coating with a 0.4-0.7 mil thickness.

The clear finish (FA2) and integral color uses Duranodic with 0.7 mil and thicker.

APPLICATION Aluminum

WARRANTY 5 year



Clear
FA1 / FA2



Champagne
FA3



Light Bronze
FA4



Medium
Bronze FA5



Dark Bronze
FA6



Extra Dark
Bronze FA7



Black
FA8

Trinar®

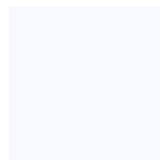
FINISH OPTION

Trinar® is a high performance fluoropolymer coating with 70% Polyvinylidene Fluoride (PVDF) and provides maximum resistance against color fade and chalking. The most durable and long lasting finish in the industry; meets or exceeds AAMA 620/621 and AAMA 2605.

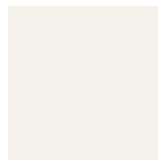
APPLICATION Aluminum

WARRANTY 10 year (standard) or 20 year

STANDARD COLORS



Polar White
FK80



Bone White
FK81



Taupe
FK82



Dove Gray
FK83



Slate Gray
FK84



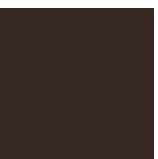
Galaxy Blue
FK85



Forest Green
FK86



Autumn
FK87

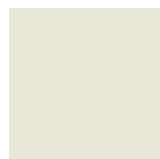


Medium
Bronze FK88



Black
FK89

SPECIAL ORDER *Common industry colors, special order.*



White Stone
FK90



Surrey Beige
FK91



Sandstone
FK92



Medium Taupe
FK93



Seal Brown
FK94



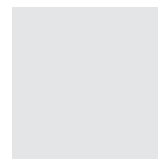
Milano Blue
FK95



Aged Copper
FK96



River Rouge
Red FK96



Bright Silver
FK98



Copper
FK99



Great Products.
Better Partners.



9300 73RD AVENUE NORTH
BROOKLYN PARK, MN 55428

(888) 412-3726
(866) 916-6672 FAX

INFO@BABCOCKDAVIS.COM

BABCOCKDAVIS.COM

