

# proGRIL™

## STAINLESS STEEL ARCHITECTURAL GRILLE

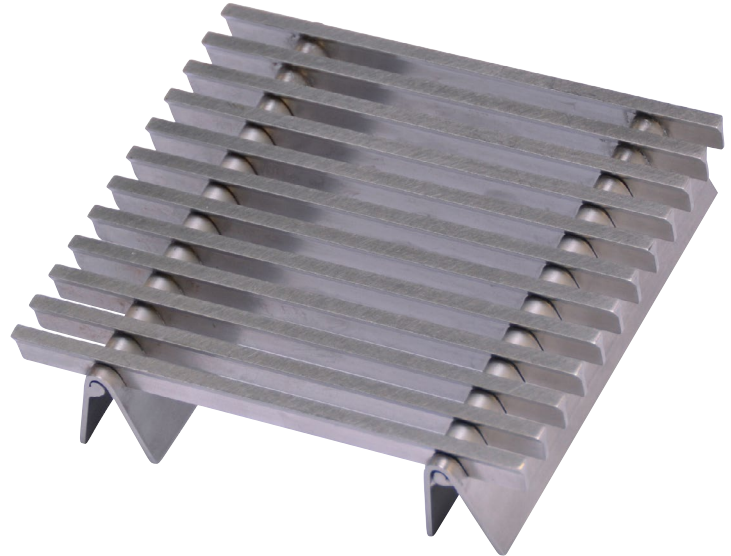
Babcock-Davis' new stainless steel proGRIL offers top-of-the-line elegance and symmetry that will make a statement of grandeur in any entry.

### FEATURES

**PREMIER PRODUCT** Top-of-the-line stainless steel design for high-end buildings with entrances that make a statement of grandeur.

**MECHANICALLY INTERLOCKED** Design with a u-clip construction.

**ARCHITECTURAL CURVES** Available with optional curved wires for revolving doors and column designs.



ZONES  
1 + 2

### DETAILS

**MATERIAL** Stainless Steel, Type 304 or 316

**DEPTH** 3/4 inch or 1-1/8 inch

**TREAD SPACING** .3275 inch on center

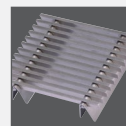
**TREAD DESIGN** .140 inch profile bar

**TREAD OPTIONS** Straight or Curved Wire

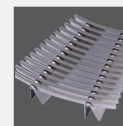
**FRAMES** Level Bed

**ROLLING LOAD** 500 lbs/wheel

### TREADS

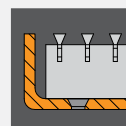


Straight  
Wire



Curved  
Wire

### FRAMES



Level Bed,  
Mech. Fastened

### GRILLE

MODEL	TREAD	FUNCTION	DEPTH	TRAFFIC
BGP34S	Straight Wire	Scraping	3/4"	Medium
BGP34C	Curved Wire	Scraping	3/4"	Medium
BGP98S	Straight Wire	Scraping	1-1/8"	Heavy
BGP98C	Curved Wire	Scraping	1-1/8"	Heavy

### FRAME

MODEL	MOUNTING	MATERIAL	PROFILE	DEPTH
BFP34LBM	Level Bed, Mech. Fastened	Stainless Steel	1/8"	7/8"
BFP98LBM	Level Bed, Mech. Fastened	Stainless Steel	1/8"	1-1/4"