

Non-Drainable

FLOOR DOOR, 300PSF

The non-drainable pedestrian floor door is designed for standard-duty load and provides a flush installation for new concrete applications. Ideal use for utility and general building applications where water infiltration is not a concern.

FEATURES

PEDESTRIAN LOAD Designed for standard duty loads and tested up to 300psf live load.

NEW CONCRETE APPLICATION The built in angle frame with an integral flange allows for new concrete construction.



DETAILS

LOAD 300 psf live load

MATERIAL Aluminum: 1/4 inch, mill finish, gray primer on exterior frame (*for cast-in only*)

COVER Diamond tread plate

FRAME Angle with 1 inch integral flange

INSTALLATION Cast-In or Bolt-In

SPRING Enclosed coil, Type 17-7 Stainless Steel

HINGES Heavy-duty, Type 316 Stainless Steel

HOLD OPEN ARM Type 316 Stainless Steel, automatic, locks cover in open position

LATCH Slam latch, Type 316 Stainless Steel, with inside lever handle, includes removable threaded plug and key

GASKET EPDM gasket

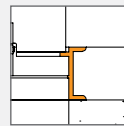
OPTIONS Padlock Hasps, Locks, Finishes, Gasket, Safety Grates, Safety Nets, Safety Rails, Skirting

MATERIALS

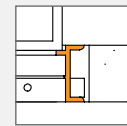


Aluminum

FRAME



Angle Frame
Cast-in



Angle Frame
Bolt-in

ORDER GUIDE

MODEL	WIDTH	X	LENGTH	COVER	FL
BFDNPA		X			FL
	Standard Sizes (W x L)			S Single Leaf	
	Single Leaf	Double Leaf		D Double Leaf	
	24" x 24"	48" x 48"			
	30" x 36"	48" x 72"			
	36" x 36"	60" x 60"			
	42" x 42"				

Additional sizes available, call for more information.