

MAXgrid™

VINYL MAT

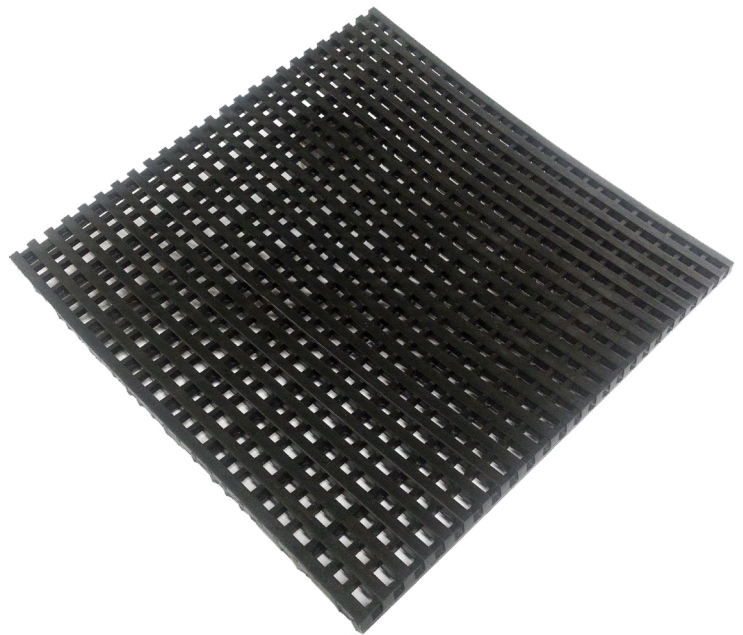
Babcock-Davis' new MAXgrid is a flexible, open weave, vinyl mat. The patented grid rib system is heel resistant. This system will trap dirt and sand while retaining the debris within the grid. Easily roll back the mat for cleaning. Ideal for retail applications with heavy pedestrian traffic.

FEATURES

HINGE-FREE, NOISE-FREE The injection molded mats are fused together to form a flexible mat. The flexible PVC can be rolled back for easy cleaning.

PATENTED HOLD-DOWN SYSTEM The mats are secured in place with a unique, hidden, retainer system. Engineered for easy installation and removal for cleaning.

HEAVY-DUTY, HIGH TRAFFIC The combination of the deep well, and the open weave design, creates a large debris collection area; necessary for high pedestrian traffic.



ZONES
1 - 3

DETAILS

MATERIAL Vinyl

DEPTH 1/2 inch

TREAD SPACING 3/4 inch on center

TREAD OPTIONS Vinyl Rails

FRAME Level Bed or Surface Mount

ROLLING LOAD 1200 lbs/wheel

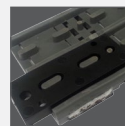
MAT

MODEL	TREAD	FUNCTION	DEPTH	TRAFFIC
BMG12	Vinyl	Scraping	1/2"	Medium to Heavy

FRAME

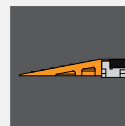
MODEL	MOUNTING	MATERIAL	PROFILE	DEPTH
BFG12SV	Surface	Vinyl	2-3/4"	1/2"
BFG12SAM	Surface	Aluminum	2"	1/2"
BFG12LCH	Level Bed, Mech. Fastened Channel	Aluminum	3/4"	1/2"
BFG12LTR	Level Bed, Mech. Fastened Transition	Aluminum	1"	1/2"
BFG12LTO	Level Bed, Mech. Fastened Transition with Overhang	Aluminum	1"	1/2"

ATTACHMENT

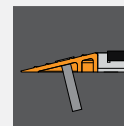


Lock Down Clips

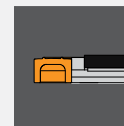
FRAMES



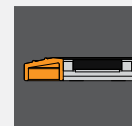
Surface, Vinyl



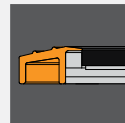
Surface, Aluminum



Level Bed, Mech. Fastened Channel



Level Bed, Mech. Fastened Transition



Level Bed, Mech. Fastened Transition with Overhang