



Luminous Egress Products

10 1443 | PRODUCT CATALOG



Great Products. Better Partners.



Great Products. Better Partners.



FALL PROTECTION

05 5213 / 07 7200



ACCESS DOORS

08 3100



ROOF HATCHES + SMOKE VENTS

07 7200



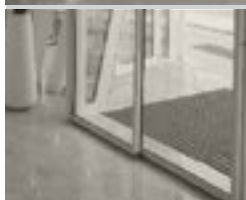
STAIR TREADS + NOSINGS

05 5000



FLOOR DOORS

08 3483



ENTRANCE MATS + GRILLES

12 4813 / 12 4816



LUMINOUS EGRESS PRODUCTS

10 1443



illuminating safety.

Luminous Egress Products

Codes + Compliance	5
Selection Guide	5-6

STRIPS + TAPES 7-10

Lume-A-Lite Handrail Products	7
Lume-A-Lite Demarcation Products	8
Lume-A-Lite Obstacle Products	9
Lume-A-Lite Door Products	10

SIGNAGE 11-14

Lume-A-Lite Running Man Signs	11
Lume-A-Lite Floor ID Sign	12
Lume-A-Lite Not an Exit Sign	13
Lume-A-Lite Exit Signs	14

STAIR TREADS + NOSINGS 15

Lume-A-Lite Ribbed Bar Abrasive Nosing	15
Lume-A-Lite Two-Part Nosing	15
Lume-A-Lite Low Profile Renovation Nosing	15

More than a source for your
commercial building products...

A Partnership

Dear Partner,

Thank you for your continued confidence in Babcock-Davis. On behalf of the entire company, I can tell you that we are motivated and inspired to from our partnership. Working with you to deliver commercial building products and services that exceed your expectations is our top priority.

For over 100 years, we have remained dedicated to building and designing the highest quality commercial building products. Our product offering and manufacturing capabilities have grown significantly over the years thanks to the quality commitment of our many hard working employees in Minnesota. We proudly stand behind every product that we ship out every day and around the world.

Sourcing commercial building products is never as simple as it seems. This is particularly true when it comes to the type of specialty and architectural building products that we supply. It takes a collaborative effort of resources and information to get the job done right. We understand all the complexities and time sensitivities involved. This is why we have built such a strong network of people and processes to better serve all of you, our partners. We do so with flexibility and nimbleness that fit your objectives-not ours.

We are excited for the future and the opportunity to work with you and to continue to exceed your expectations. You have our commitment that we will work hard every day to help you succeed.

If there is anything that we can do to improve our service to you, we will listen.

Sincerely,

Sue W. Thomas

Sue W. Thomas | **CHIEF EXECUTIVE OFFICER**

Don't get caught in the dark.

The Lume-A-Lite egress path markings, signs, stair treads and nosings meet the following codes:

International Building Code (IBC)

2015/2018 Section 1025 Luminous Egress Path Markings
2009/2012 Section 1024 Luminous Egress Path Markings

International Fire Code (IFC)

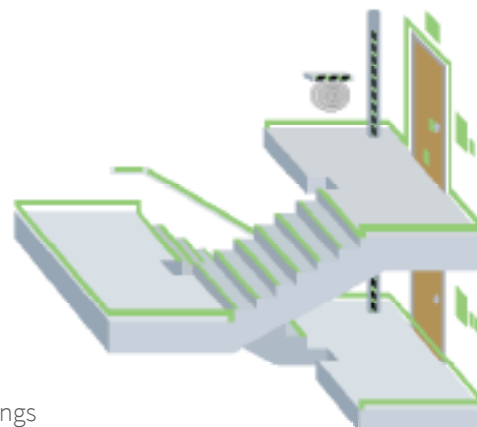
2015/2018 Section 1025 Luminous Egress Path Markings
2009/2012 Section 1024 Luminous Egress Path Markings

National Fire Protection Agency (NFPA)

2015/2018 NFPA 101, Life Safety Code Section 7.2.2.5.5 - Exit Stair Path Markings

New York City Building Code

2014 Chapter 10, Section BC 1024 Luminous Egress Path Markings



Additionally, these products have been tested to one or more of the following standards:

ASTM International (ASTM)

ASTM E2072 Standard Specification for Photoluminescent Safety Markings

"Except that the charging source shall be 1 footcandle (11 lux) of fluorescent illumination for 60 minutes, and the minimum luminance shall be 30 milicandelas per square meter at 10 minutes and 5 milicandelas per square meter after 90 minutes."

Underwriters Laboratory (UL)

UL 1994 Standard for Luminous Egress Path Marking Systems

PRODUCT SELECTION GUIDE

The following selection guide is designed to assist you in selecting the right product for your application.

Strips + Tapes



Handrail Strip



Marking Strip



NYC Marking Strip



Marking Tape



Obstacle Strip



Obstacle Tape



Door Latch Tape

Model	BEM-DSH1	BEM-DS1	BEM-DS1-NYC	BEM-DT1	BEM-DSO1	BEM-DTO1	BEM-DLM
Handrails	✓			✓			
Landing Floors		✓	✓				
Landing Walls		✓	✓	✓			
Door Frames		✓	✓	✓			
Panic Bars		✓	✓	✓			
Latch Handles							✓
Obstructions					✓	✓	
NYC Compliant			✓	✓	✓	✓	✓

PRODUCT SELECTION GUIDE

Signs



Running Man



Running Man
w/Arrow



Running Man
Exit



Running Man
Final Exit



Running Man,
Exit & Arrow



Running Man
w/Lobby Exit &
Arrow

Model	BEM-SRR/SRL	BEM-SRA	BEM-SRE	BEM-SREFA	BEM-SREA	BEM-SRELA
General Exit Doors	✓	✓	✓	✓	✓	
Lobby Exit Doors	✓	✓	✓	✓	✓	✓
Misc. Wall Direction	✓	✓	✓	✓	✓	
NYC Compliant		✓	✓	✓	✓	✓



Floor ID



Not an Exit



1-Sided
Exit Sign



2-Sided
Exit Sign

Model	BEM-SFI	BEM-SNE	BEM-SE_1	BEM-SE_2
General Exit Doors			✓	✓
Floor Identification	✓			
Non-Exit Doors		✓		
Walls	✓			✓
Above Exit Doors			✓	✓
NYC Compliant	✓	✓		

Stair Treads + Nosings



Ribbed
Abrasive



Two-Part Ribbed



Low Profile
Renovation



Renovation

Model	BSTSM-P3E	BSTTM-P3.375E	BSTRM-R2A	BSTRM-A5/L5
Stair Treads	✓	✓	✓	✓
Landing Floors	✓	✓		
Retrofit			✓	✓
NYC Compliant	✓	✓	✓	✓

Lume-A-Lite™

HANDRAIL PRODUCTS

Lume-A-Lite Handrail Products alight handrails provide safe egress in the event of a power outage or smoky conditions. The Handrail Strip is curved to fit onto standard round handrails and features an easy peel and stick backing. For an economic option, the Lume-A-Lite Marking Tape offers a fast and easy install.

FEATURES

BRIGHTNESS Materials are photoluminescent colored, bright and require no electrical charge. High-quality strips feature integrated dye throughout the material to exceed codes for brightness.

DURABILITY The Handrail Strip is long-lasting and tamper resistant. It is designed with materials that last, like the foam back adhesive and 53 mil resin.

INSTALLATION EASE The peel-and-stick adhesive backing is easy to install. Installation and maintenance manuals are available at www.babcockdavis.com.



Handrail Strip



Marking Tape

DETAILS

MATERIAL

- BEM-DSH1: 53 mil Resin
- BEM-DT1: 16 mil Acrylic
- BEM-DT1-NYC: 16 mil Acrylic

COLOR Photoluminescent

WIDTH 1 inch

LENGTH

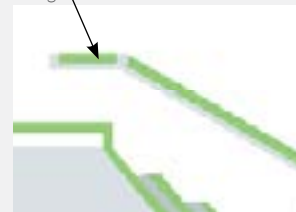
- BEM-DSH1: 10 linear feet
- BEM-DT1: 150 linear feet
- BEM-DT1-NYC: 100 linear feet

MOUNTING Surface, Adhesive Back

CODE COMPLIANCE 2015/2018 IBC Section 1025, 2015/2018 IFC Section 1025, NFPA101 Section 7.2.2.5.5, and 2014 NYC BC Section 1024 (*BEM-DT1-NYC only*)

TEST STANDARD UL 1994 and ASTM E2072

Handrail
Marking



MODELS

MODEL	LENGTH	PRODUCT NAME	DESCRIPTION
BEM-DSH1-10	10 LF	Lume-A-Lite Handrail Strip	Resin Strip, Pre-curved, Self-Adhesive
BEM-DT1-150	150 LF	Lume-A-Lite Marking Tape	Acrylic Tape, Self-Adhesive
BEM-DT1-100-NYC	100 LF	Lume-A-Lite NYC Marking Tape	NYC Compliant Acrylic Tape, Self-Adhesive

Lume-A-Lite™

DEMARCATIION PRODUCTS

Lume-A-Lite Demarcation products outline hallways and stair landings in an egress stairway. The strip features a tapered edge for tamper resistance and can be butted up to each other for no waste. Both the strips and tape have peel and stick adhesive and are designed for floors and walls. Options are also available to meet NYC code requirements.

FEATURES

BRIGHTNESS Materials are photoluminescent colored, bright and require no electrical charge. High-quality strips feature integrated dye throughout the material to exceed codes for brightness.

DURABILITY The Marking Strips are long-lasting and tamper resistant. It is designed with materials that last, like the foam back adhesive and 53 mil resin or the aluminum backed strip.

INSTALLATION EASE Labor saving features like peel-and-stick adhesives require no special tools and no special training. Installation and maintenance manuals are available at www.babcockdavis.com.



Marking Strip



Marking Tape

DETAILS

MATERIAL

- BEM-DS1: 53 mil Resin
- BEM-DS1-NYC: 32 mil Aluminum with Acrylic Tape
- BEM-DT1: 16 mil Acrylic
- BEM-DT1-NYC: 16 mil Acrylic

COLOR Photoluminescent

WIDTH 1 inch

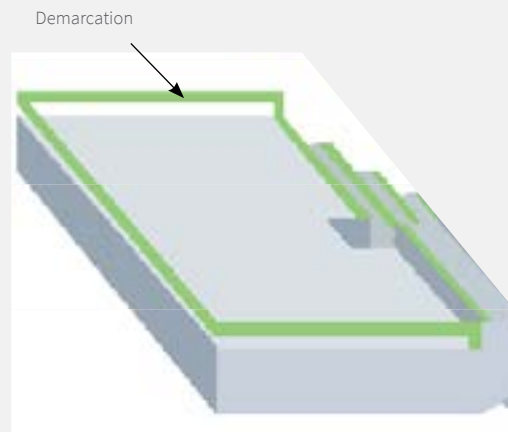
LENGTH

- BEM-DS1: 100 linear feet
- BEM-DS1-NYC: 54 inches
- BEM-DT1: 150 linear feet
- BEM-DT1-NYC: 100 linear feet

MOUNTING Surface, Adhesive Back

CODE COMPLIANCE 2015/2018 IBC Section 1025, 2015/2018 IFC Section 1025, NFPA101 Section 7.2.2.5.5, and 2014 NYC BC Section 1024 (*BEM-DT1-NYC only*)

TEST STANDARD UL 1994 and ASTM E2072



MODELS

MODEL	LENGTH	PRODUCT NAME	DESCRIPTION
BEM-DS1-100	100 LF	Lume-A-Lite Marking Strip	Resin Strip, Self-Adhesive
BEM-DS1-54-NYC	54"	Lume-A-Lite NYC Marking Strip	NYC Compliant Aluminum Strip, Adhesive (<i>not supplied</i>)
BEM-DT1-150	150 LF	Lume-A-Lite Marking Tape	Acrylic Tape, Self-Adhesive
BEM-DT1-100-NYC	100 LF	Lume-A-Lite NYC Marking Tape	NYC Compliant Acrylic Tape, Self-Adhesive

Note: Marking Tape is not recommended for floor applications. To illuminate floors, please use marking strips.

Lume-A-Lite™

OBSTACLE PRODUCTS

The Lume-A-Lite Obstacle Strips and Tape are used to mark obstacles, such as stand pipes and hose cabinets, that are located in an egress stairway. The material has been tested to UL 1994 test standards and meets current IBC, IFC, NFPA and NYC Building Code requirements.

FEATURES

BRIGHTNESS Materials are photoluminescent colored, bright and require no electrical charge.

DURABILITY The Obstacle Strip is long-lasting and tamper resistant. It is designed with materials that last, like the aluminum backed strip.

INSTALLATION EASE Labor saving features like the obstacle tape's peel-and-stick adhesives require no special tools and no special training.



Obstacle Strip



Obstacle Tape

DETAILS

MATERIAL

- BEM-DSO1: 32 mil Aluminum with Acrylic Tape
- BEM-DTO1: 16 mil Acrylic

COLOR Photoluminescent and Black

WIDTH 1 inch

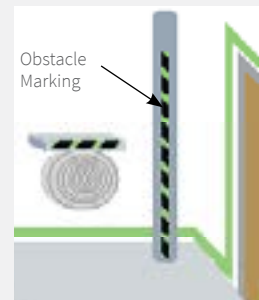
LENGTH

- BEM-DSO1: 5 linear feet
- BEM-DTO1: 100 linear feet

MOUNTING Surface, Self-Adhesive

CODE COMPLIANCE 2015/2018 IBC Section 1025, 2015/2018 IFC Section 1025, NFPA101 Section 7.2.2.5.5, and 2014 NYC BC Section 1024

TEST STANDARD UL 1994 and ASTM E2072



MODELS

MODEL	SIZE	PRODUCT NAME	DESCRIPTION
BEM-DSO1-60	1" x 5 LF	Lume-A-Lite Obstacle Strip	NYC Compliant Striped Strip, Adhesive (<i>not supplied</i>)
BEM-DTO1-100	1" x 100 LF	Lume-A-Lite Obstacle Tape	NYC Compliant Striped Tape, Self-Adhesive

Lume-A-Lite™

DOOR PRODUCTS

Lume-A-Lite Door products are made of glow-in-the-dark photoluminescent resin or acrylic. Available in a four inch die cut decal, or one inch rolls; the door products are designed to indicate where the door frame and latch are located in the event of a power outage or a smoke filled room.

FEATURES

BRIGHTNESS Materials are photoluminescent colored, bright and require no electrical charge. High-quality strips feature integrated dye throughout the material to exceed codes for brightness.

DURABILITY The Marking Strip is long-lasting and tamper resistant. It is designed with materials that last, like the foam back adhesive and 53 mil resin.

INSTALLATION EASE Labor saving features like peel-and-stick adhesives require no special tools and no special training. Installation and maintenance manuals are available at www.babcockdavis.com.



Die Cut Tape



Marking Strip



Marking Tape

DETAILS

MATERIAL

- BEM-DLM: 16 mil Acrylic
- BEM-DS1: 53 mil Resin
- BEM-DT1: 16 mil Acrylic
- BEM-DT1-NYC: 16 mil Acrylic

COLOR Photoluminescent

SIZE

- BEM-DLM: 4 inches by 4 inches
- BEM-DS1: 1 inch by 100 linear feet
- BEM-DT1: 1 inch by 150 linear feet
- BEM-DT1-NYC: 1 inch by 100 linear feet

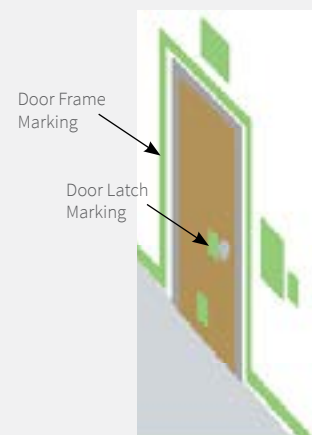
MOUNTING Surface, Self-Adhesive

CODE COMPLIANCE 2015/2018 IBC Section 1025, 2015/2018 IFC Section 1025, NFPA101 Section 7.2.2.5.5, and 2014 NYC BC Section 1024 (*BEM-DLM and BEM-DT1-NYC only*)

TEST STANDARD UL 1994 and ASTM E2072

MODELS

MODEL	SIZE	PRODUCT NAME	DESCRIPTION
BEM-DLM-4X4	4" x 4"	Lume-A-Lite Door Latch Tape	NYC Compliant Die Cut Tape, Self-Adhesive
BEM-DS1-100	1" x 100 LF	Lume-A-Lite Marking Strip	Resin Strip, Self-Adhesive
BEM-DT1-150	1" x 150 LF	Lume-A-Lite Marking Tape	Acrylic Tape, Self-Adhesive
BEM-DT1-100-NYC	1" x 100 LF	Lume-A-Lite NYC Marking Tape	NYC Compliant Acrylic Tape, Self-Adhesive



Lume-A-Lite™

RUNNING MAN SIGNS

Lume-A-Lite Running Man Signs provide a non-electric luminous egress routing system that is easily followed in the case of power loss in an emergency situation. Required by code, the standard running man symbol identifies the direction of egress. The material has been tested to UL 1994 and meets current IBC, IFC, and NFPA code requirements.

FEATURES

BRIGHTNESS Materials are photoluminescent colored, bright and require no electrical charge.

DURABILITY The Running Man Sign is long-lasting. It is designed with materials that last, like the foam back adhesive tabs and vinyl.

INSTALLATION EASE The Running Man Signs come with either self-adhesive tabs or can be mechanically fastened through pre-drilled holes. Installation and maintenance manuals are available at www.babcockdavis.com.



Left Running Man Sign



Right Running Man Sign

DETAILS

MATERIAL Vinyl

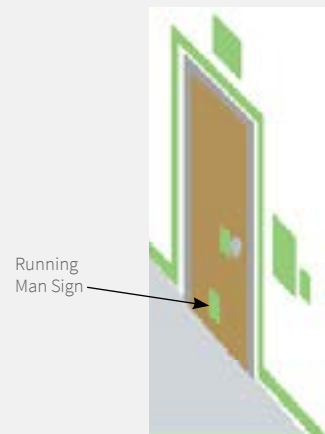
COLOR Photoluminescent and Green

MOUNTING Surface, Adhesive Tab or Mechanically Fastened

SIZE 8 inches by 8 inches

CODE COMPLIANCE 2015/2018 IBC Section 1025, 2015/2018 IFC Section 1025, and NFPA101 Section 7.2.2.5.5

TEST STANDARD ASTM E2072



MODELS

MODEL	SIZE	PRODUCT NAME	DIRECTION
BEM-SRR-8X8	8" x 8"	Lume-A-Lite Running Man Sign	Right
BEM-SRL-8X8	8" x 8"	Lume-A-Lite Running Man Sign	Left

Lume-A-Lite™

NYC COMPLIANT RUNNING MAN SIGNS

The Lume-A-Lite NYC Compliant Running Man Signs features the code required running man and various directional arrows and labels. This sign comes with adhesive tabs for easy wall mounting.

FEATURES

BRIGHTNESS Materials are photoluminescent colored, bright and require no electrical charge.

DURABILITY The NYC Compliant Running Man Signs are long-lasting. It is designed with materials that last, like the foam back adhesive tabs and vinyl.

INSTALLATION EASE The NYC Compliant Running Man Signs come with either self-adhesive tabs or can be mechanically fastened through pre-drilled holes. Installation and maintenance manuals are available at www.babcockdavis.com.



Running Man with Arrow



Running Man Exit



Lobby Exit with Arrow



Running Man Final Exit



Running Man Arrow Exit

DETAILS

MATERIAL Vinyl

COLOR Photoluminescent and Green

MOUNTING Surface, Adhesive Tab or Mechanically Fastened

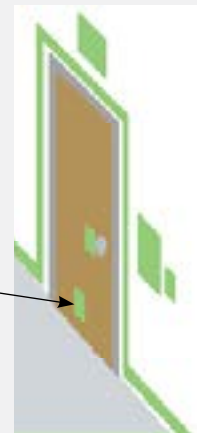
CODE COMPLIANCE 2015/2018 IBC Section 1023 and 1025, 2015/2018 IFC Section 1023 and 1025, and 2014 NYC BC Section 1024

TEST STANDARD UL 1994

MODELS

MODEL	SIZE	DIRECTION	PRODUCT NAME
BEM-SRAU-8X4.5	8" x 4-1/2"	Up	Running Man with Arrow Sign
BEM-SRAUR-8X4.5		Up, Right	
BEM-SRAUL-8X4.5		Up, Left	
BEM-SRAR-8X4.5		Right	
BEM-SRAD-8X4.5		Down	
BEM-SRADR-8X4.5		Down, Right	
BEM-SRADL-8X4.5		Down, Left	
BEM-SRAL-8X4.5		Left	
BEM-SREFAR-8X11	8" x 11"	Right	Running Man Final Exit Sign
BEM-SREFAUR-8X11		Up, Right	
BEM-SREFAL-8X11		Left	
BEM-SREFAUL-8X11		Up, Left	
BEM-SRER-13X4.5	13" x 4-1/2"	Right	Running Man Exit Sign
BEM-SREL-13X4.5		Left	

Running Man Sign



MODEL	SIZE	DIRECTION	DESCRIPTION
BEM-SRAU-16X7	16" x 7"	Right	Lobby Exit with Arrow Sign
BEM-SRAUR-16X7		Up, Right	
BEM-SRAL-16X7		Left	
BEM-SRAUL-16X7		Up, Left	
BEM-SREAR-8X9	8" x 9"	Right	Running Man Arrow Exit Sign
BEM-SREAU-8X9		Up, Right	
BEM-SREADR-8X9		Down, Right	
BEM-SREAL-8X9		Left	
BEM-SREAU-8X9		Up, Left	
BEM-SREADL-8X9		Down, Left	

Lume-A-Lite™

FLOOR ID SIGN

Lume-A-Lite Floor ID Signs are custom made for your building. These signs are made of the same photoluminescent material as the running man signs. The stair letters are at least 1-1/2 inches tall and the number designating the floor level is a minimum of 5 inches in height and is in braille immediately below. Other letters and numbers are at least 1 inch in height, as required per Section 1023.9.1.

DETAILS

MATERIAL Vinyl

COLOR Photoluminescent and black

MOUNTING Surface, Adhesive Tabs or Mechanically Fastened

SIZE 13 inches by 18 inches

CODE COMPLIANCE 2015/2018 IBC Section 1023, 2015/2018 IFC Section 1023, and 2014 NYC BC Section 1022.8

TEST STANDARD UL 1994



MODELS

MODEL	DESCRIPTION
BEM-SFI-13X18	Floor ID Sign

Lume-A-Lite™

NOT AN EXIT SIGN

The Lume-A-Lite Not an Exit Sign is designed to mark doors in an egress stairway that are not an exit door. These signs are constructed with a photoluminescent vinyl that collects and stores ambient light and glows during a blackout or smoky conditions.

DETAILS

MATERIAL Vinyl

COLOR Photoluminescent, black and red

MOUNTING Surface, Adhesive Tabs or Mechanically Fastened

SIZE 5-1/2 inches by 6-1/2 inches

CODE COMPLIANCE 2014 NYC BC Section 1024

TEST STANDARD UL 1994



MODELS

MODEL	DESCRIPTION
BEM-SNE-5.5X6.5	Not an Exit Sign

Lume-A-Lite™

EXIT SIGNS

Lume-A-Lite Exit Signs provide a non-electric luminous egress routing system that is easily followed in the case of power loss in an emergency situation. Choose between one-sided or two-sided surface mount options. The material has been tested to UL 924 standards and meets current IBC, IFC, and NFPA code requirements.

FEATURES

BRIGHTNESS The glow-in-the-dark photoluminescent signs provides directions to the exit route. These exit signs are rated for 100 foot visibility with 90 minute emergency illumination.

DURABILITY The Exit Signs are long-lasting. It is designed with materials that last.

INSTALLATION EASE The Exit Signs come with mounting bracket hardware that can be installed with minimal tools. Installation and maintenance manuals are available at www.babcockdavis.com.



One-Sided Exit Sign



Two-Sided Exit Sign

DETAILS

MATERIAL Resin

COLOR Photoluminescent and red, green or black

MOUNTING Mechanically Fastened

SIZE 16 inches by 8 inches

CODE COMPLIANCE 2015/2018 IBC Section 1023 and 1025, 2015/2018 IFC Section 1023 and 1025

TEST STANDARD UL 924

MODELS

MODEL	COLOR	DESCRIPTION
BEM-SLE100R1-15.5X8.75	Red	1-Sided
BEM-SLE100G1-15.5X8.75	Green	
BEM-SLE100B1-15.5X8.75	Black	
BEM-SLE100R2-15.5X8.75	Red	2-Sided
BEM-SLE100G2-15.5X8.75	Green	
BEM-SLE100B2-15.5X8.75	Black	

COLORS



Red



Green



Black



Lume-A-Lite™

STAIR TREADS + NOSINGS

Lume-A-Lite Ribbed Bar Abrasive Stair treads are the industry's leading glow-in-the-dark tread. Also available in two-part ribbed abrasive (BSTTM). These treads are perfect for indoor and outdoor applications such as stadiums and parking garages. The Low-Profile Renovation Nosing (BSTRM) is ideal for indoor applications.

FEATURES

BRIGHTNESS The embedded glow-in-the-dark photoluminescent material provides needed illumination for a safe exit. Choose an embedded resin with superior glow or abrasive grit insert that exceeds code requirements.

DURABILITY The stair treads and nosings are long-lasting. They are designed with materials that last, like extruded aluminum and abrasive grit.

INSTALLATION EASE The Low-Profile Renovation nosings are cut to length and glued down. Installation and maintenance manuals are available at www.babcockdavis.com.



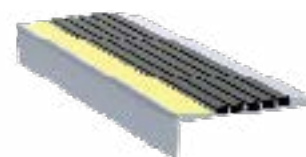
Ribbed Bar Abrasive



Two-Part Ribbed Bar Abrasive



Low Profile Renovation



Renovation

DETAILS

MATERIAL Extruded Aluminum with an embedded 53 mil resin insert or 21 mil abrasive grit insert

APPLICATION Poured Concrete or Steel Pan

TREAD

- BSTSM/BSTTM: Ribbed Abrasive
- BSTRM-R2A: Serrated
- BSTRM-A5/L5: Ribbed Abrasive

WIDTH

- BSTSM: 3 inches
- BSTTM: 3-3/8 inches
- BSTRM-R2A: 2 inches
- BSTRM-A5/L5: 5 inches

LENGTH Up to 12 linear feet

MOUNTING

- BSTSM: Anchor or Drilled Hole, Mech. Fastened
- BSTTM: Anchor
- BSTRM-R2A: Adhesive (supplied by other)
- BSTRM-A5/L5: Drilled Hole, Mechanically Fastened

NOSING

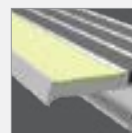
- BSTSM/STTM: Short-Tipped
- BSTRM-R2A: Radius
- BSTRM-A5/L5: Long, Angled

OPTIONS Stair Nosing Guards, Mitered Cuts, Painted Undersides or Taped Tops

CODE COMPLIANCE 2015/2018 IBC Section 1025, 2015/2018 IFC Section 1025

TEST STANDARD ASTM 2072, UL 1994

NOSING



Short-Tipped



Radius

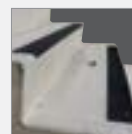


Long



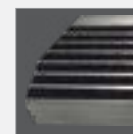
Angled-Long

OPTIONS



Stair Nosing Guards™*

*Available on BSTSM-P3E/D only



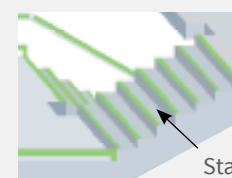
Mitered Cuts



Painted Undersides




Taped Tops



Stair Nosing

MODELS

MODEL	WIDTH	TYPE	INSTALL
BSTSM-P3E	3"	One-Part	Cast-In, Extruded Anchor
BSTSM-P3D	3"	One-Part	Drilled Hole, Mech. Fastened
BSTTM-P3.375E	3-3/8"	Two-Part	Cast-In, Extruded Anchor
BSTRM-R2A	2"	Renovation	Adhesive
BSTRM-A5/L5	5"	Renovation	Drilled Hole, Mech. Fastened

A black and white photograph of two men shaking hands in front of a large window. The man on the left is wearing glasses and a light-colored button-down shirt. The man on the right is wearing a sweater over a collared shirt. The background shows a modern building with large glass panels. A large, dark, diagonal shape is overlaid on the left side of the image.

Great Products.
Better Partners.



9300 73RD AVENUE NORTH
BROOKLYN PARK, MN 55428

(888) 412-3726
(866) 916-6672 FAX

INFO@BABCOCKDAVIS.COM

BABCOCKDAVIS.COM

