

# Inset

## STAIR TREADS + NOSINGS

Babcock-Davis Inset Treads and Nosings are an ideal solution for walkways, ramps, landings and stair treads where you require a strip of abrasive material. The inset treads are available in bar or full abrasive.

### FEATURES

**RAMPS & WALKWAYS** Inset treads and nosings are the ideal solution for providing an anti-slip surface. Install on ramps, walkways, platforms and stairs on most surfaces.

**ANTI-SLIP SAFETY TREADS** Reduce slip hazards with ADA and OSHA compliant abrasive stair treads. Abrasive treads provide a high level of slip resistance.

**CONTINUOUS COLOR** No need to worry about walking off the color as the abrasive material filler is dyed throughout.



BTSF-N2.25E shown

### DETAILS

**MATERIAL** Extruded Aluminum

**APPLICATION** Poured Concrete, Steel Pan, Terrazzo or Wood

**TREAD** BSTSB-N: Ribbed Abrasive or EcoTread  
BSTSF-N: Full Abrasive

**WIDTH** 1-3/8, 2-1/4 or 3 inches

**LENGTH** Up to 12 linear feet

**MOUNTING** Anchor or Drilled Holes, Mech. Fastened

**NOSING** None

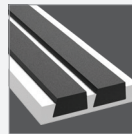
**OPTIONS** Photoluminescent, Vision Line, Mitered Cuts, Painted Undersides or Taped Tops

**CODE COMPLIANCE** 2010 ADA 504, 2015 IBC/ICC Section 1029.13.2, 2018 IBC/ICC Section 1029.14.2, and 2016 California Building Code Section 11B-504.4.1 (BSTSF-N2.25 only) and 11B-504.5

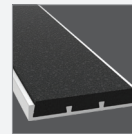
### MODELS

MODEL	WIDTH	TREAD	INSTALL
BSTSB-N1.375D	1-3/8"	Abrasive Grit	Drilled Hole, Mech. Fastened
BSTSB-N1.375E	1-3/8"		Cast-In, Extruded Anchor
BSTSB-N3D	3"		Drilled Hole, Mech. Fastened
BSTSB-N3E	3"		Cast-In, Extruded Anchor
BSTSB-N1.375D-ECO	1-3/8"	EcoTread	Drilled Hole, Mech. Fastened
BSTSB-N1.375E-ECO	1-3/8"		Cast-In, Extruded Anchor
BSTSB-N3D-ECO	3"		Drilled Hole, Mech. Fastened
BSTSB-N3E-ECO	3"		Cast-In, Extruded Anchor

### TREAD

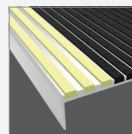


Ribbed Bar Abrasive

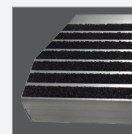


Full Abrasive

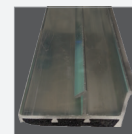
### OPTIONS



Vision Line



Mitered Cuts



Painted Undersides



Taped Tops

### FULL ABRASIVE MODELS

MODEL	WIDTH	INSTALL
BTSF-N2.25D	2-1/4"	Drilled Hole, Mech. Fastened
BTSF-N2.25E	2-1/4"	Cast-In, Extruded Anchor