

# Cast

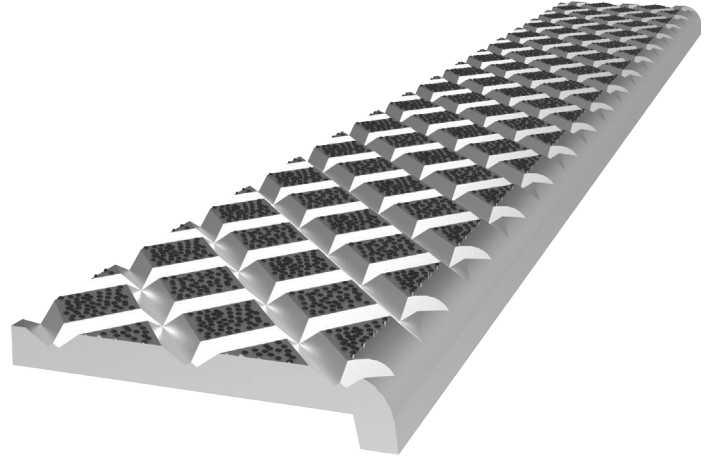
## STAIR TREADS + NOSINGS

Cast Aluminum Stair Treads are made from type 319 aluminum with a perfect sand cast finish. Ideal for heavy traffic areas such as schools, public buildings and subways, these stair treads are built to last.

### FEATURES

**HIGHLY DURABLE** These treads will take a beating and keep performing; designed to be impact resistant with anti-slip grit and barrier free.

**ANTI-SLIP SAFETY TREADS** Reduce slip hazards with ADA and OSHA compliant abrasive stair treads. The cross hatch treads with abrasive grit provides a high level of slip resistance.



### DETAILS

**MATERIALS** Aluminum

**APPLICATION** Poured Concrete or Steel Pan

**TREAD** Cross Hatch with Abrasive Grit

**WIDTH** 3 inches

**MOUNTING** Wing Anchor Installed or Shipped Loose with Drilled Holes

**NOSING** Short

**OPTIONS** Painted Undersides or Taped Tops

**CODE COMPLIANCE** 2010 ADA 504, 2015 IBC/ICC Section 1029.13.2, 2018 IBC/ICC Section 1029.14.2 and 2016 California Building Code Section 11B-504.5

### MATERIAL



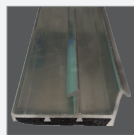
Cast Aluminum

### NOSING



Short

### OPTIONS



Painted Undersides



Taped Tops

### ORDER GUIDE

MODEL	WIDTH	MATERIAL	INSTALL	STAIR TYPE
BSTCA-C3W	3"	Aluminum	Anchor, Mechanically Fastened	Poured Concrete
BSTCA-C3C	3"	Aluminum	Anchor in Place	Poured Concrete
BSTCA-P3W	3"	Aluminum	Anchor, Mechanically Fastened	Steel Pan
BSTCA-P3C	3"	Aluminum	Anchor in Place	Steel Pan