

BMT38P  
PREMIUM  
CARPET  
INSERT

BMT38R  
RUGGED  
SCRUB  
INSERT

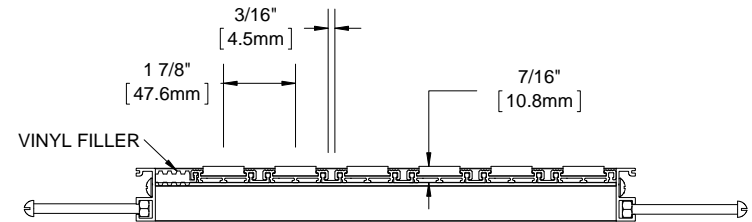
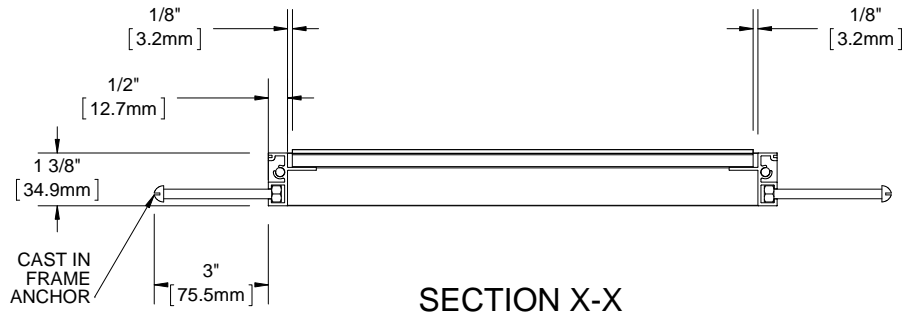
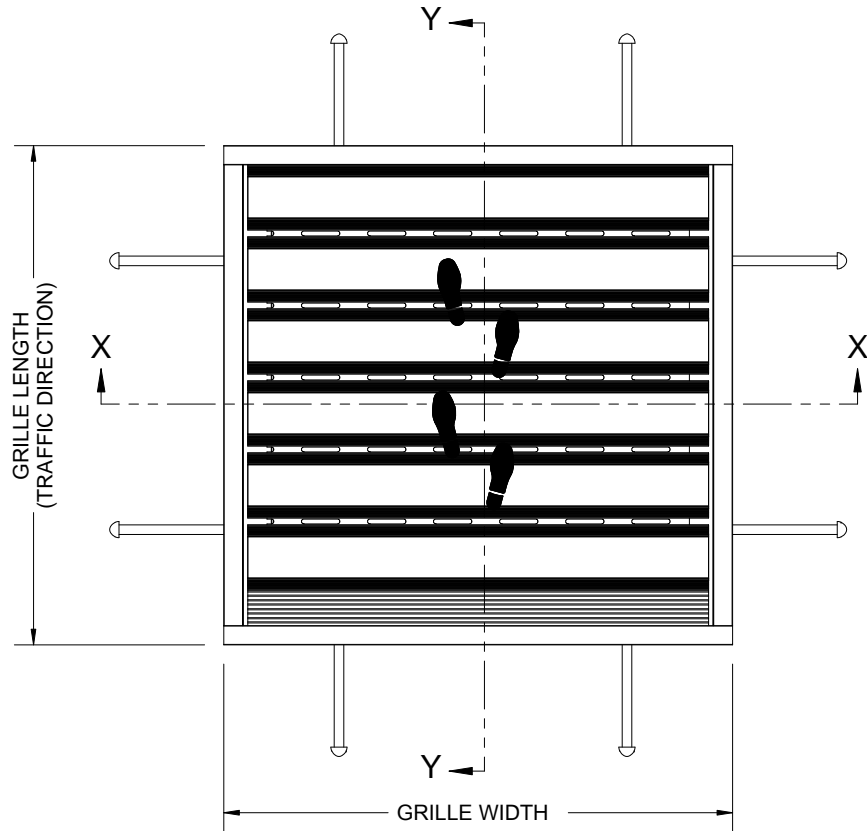
BMT38E  
RECYCLED  
RUBBER  
INSERT

BMT38U  
RIBBED  
RUBBER  
INSERT

BMT38G  
ABRASIVE  
VINYL  
INSERT

BMT38B  
BRUSH  
INSERT

| QTY | MODEL | WIDTH | LENGTH | FINISH | LOCATION |
|-----|-------|-------|--------|--------|----------|
|     |       |       |        |        |          |
|     |       |       |        |        |          |
|     |       |       |        |        |          |
|     |       |       |        |        |          |
|     |       |       |        |        |          |
|     |       |       |        |        |          |
|     |       |       |        |        |          |
|     |       |       |        |        |          |
|     |       |       |        |        |          |
|     |       |       |        |        |          |



- NOTES:**
- STANDARD MAXIMUM SECTION SIZE OF GRILLE/MAT WIDTH NOT TO EXCEED 10'-0" UNLESS OTHERWISE SPECIFIED
  - FRAME ANCHOR SPACING: 6" FROM CORNERS, 24" MAX
  - VERIFY TRAFFIC DIRECTION AND THAT SECTIONING DOES NOT OCCUR IN A TRAFFIC LANE
  - ALL RAIL COMPONENTS ARE MADE OF VINYL, ALL FRAME COMPONENTS ARE MADE OF 6063-T5 ALUMINUM ALLOY (NOT APPLICABLE WITH VINYL SURFACE MOUNT FRAME)
  - TREAD RAILS MUST RUN PERPENDICULAR TO TRAFFIC DIRECTION
  - TRIM THE FILLER PROVIDED TO ENSURE A TIGHT FIT IN THE TRAFFIC DIRECTION (NOT APPLICABLE WITH VINYL SURFACE MOUNT FRAME)
  - GRILLE DIMENSION ALLOWS FOR CLEARANCE BETWEEN GRILLE SECTIONS AND FRAMES IN THE WIDTH DIMENSION
  - ADDITIONAL INFORMATION CAN BE FOUND IN THE PRODUCT SPECIFICATION AND IS CONSIDERED PART OF THIS TRANSMITTAL.
  - FRAME PART NUMBER: BFT38LBC

PROPRIETARY AND CONFIDENTIAL: THE INFORMATION CONTAINED IN THIS DRAWING IS THE SOLE PROPERTY OF BABCOCK-DAVIS. ANY REPRODUCTION IN PART OR AS A WHOLE WITHOUT THE WRITTEN PERMISSION OF BABCOCK-DAVIS IS PROHIBITED.

|   |      |  |            |
|---|------|--|------------|
| PROJECT:  |      |  |            |
| ARCHITECT:  |      |  |            |
| CONTRACTOR:                                       |      |  |            |
|   |      | DESCRIPTION:   |            |
|   |      | MATrac, 3/8", Vinyl, LDPE Hinge, Roll-up Mat with Cast in Place, Level Bed, Aluminum Frame |            |
| 9300 73rd Avenue North<br>Brooklyn Park, MN 55428 | NAME | DATE   | SIZE       |
| DRAWN   | DKL  | 4/13/15  | A          |
| RELEASED  | PE   | 4/13/15  | SCALE: NTS |
| DWG. NO.  |      | BMT38-FLBC   |            |
| SHEET 1 OF 1                                      |      | REV A  |            |