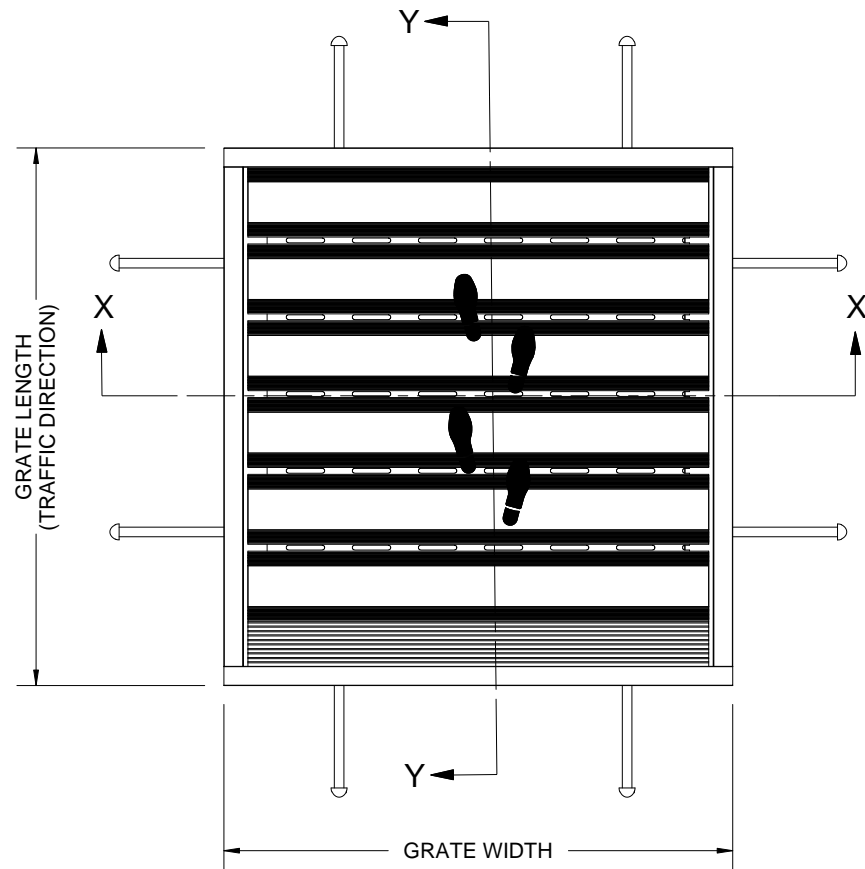


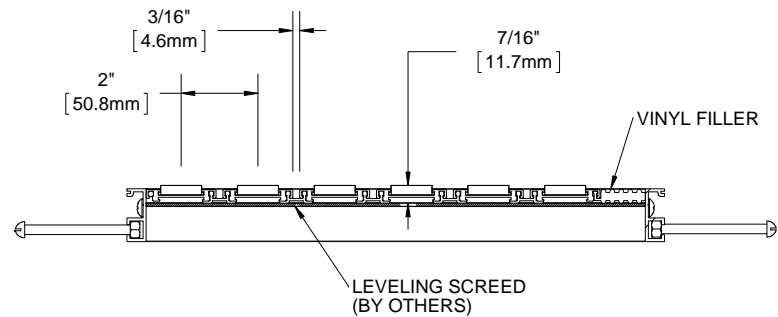
*BMQ38P PREMIUM CARPET INSERT *BMQ38R RUGGED SCRUB INSERT *BMQ38E ECOTREAD INSERT *BMQ38U RIBBED RUBBER INSERT *BMQ38V VINYL INSERT BMQ38G ABRASIVE VINYL INSERT *BMQ38B BRUSH INSERT *BMQ38A SERRATED RAIL

QTY	MODEL	WIDTH	LENGTH	FINISH	LOCATION

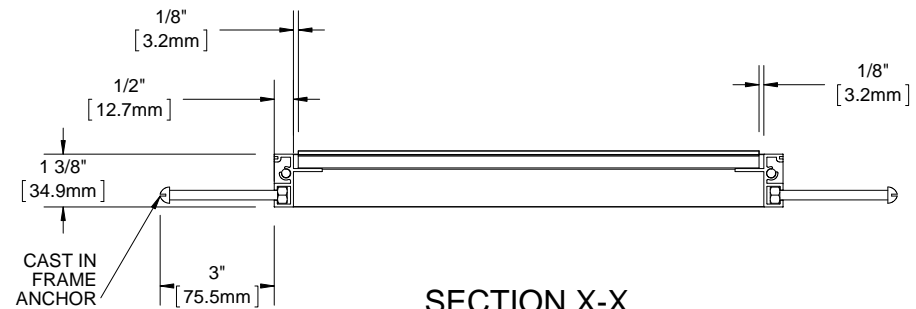
B



B



SECTION Y-Y



SECTION X-X

A

A

NOTES:

- STANDARD MAXIMUM SECTION SIZE OF GRATE/MAT WIDTH NOT TO EXCEED 10'-0" UNLESS OTHERWISE SPECIFIED
- FRAME ANCHOR SPACING: 6" FROM CORNERS, 24" MAX
- VERIFY TRAFFIC DIRECTION AND THAT SECTIONING DOES NOT OCCUR IN A TRAFFIC LANE
- ALL RAIL COMPONENTS ARE MADE OF 6063-T6 ALUMINUM ALLOY, ALL FRAME COMPONENTS ARE MADE OF 6063-T5 ALUMINUM ALLOY (NOT APPLICABLE WITH VINYL SURFACE MOUNT FRAME)
- TREAD RAILS MUST RUN PERPENDICULAR TO TRAFFIC DIRECTION
- TRIM THE FILLER PROVIDED TO ENSURE A TIGHT FIT IN THE TRAFFIC DIRECTION (NOT APPLICABLE WITH VINYL SURFACE MOUNT FRAME)
- GRATE DIMENSION ALLOWS FOR CLEARANCE BETWEEN GRATE SECTIONS AND FRAMES IN THE WIDTH DIMENSION
- ADDITIONAL INFORMATION CAN BE FOUND IN THE PRODUCT SPECIFICATION AND IS CONSIDERED PART OF THIS TRANSMITTAL.
- FRAME PART NUMBER: BFQ38LBC

* AVAILABLE IN ALTERNATING TREADS

PROPRIETARY AND CONFIDENTIAL: THE INFORMATION CONTAINED IN THIS DRAWING IS THE SOLE PROPERTY OF BABCOCK-DAVIS. ANY REPRODUCTION IN PART OR AS A WHOLE WITHOUT THE WRITTEN PERMISSION OF BABCOCK-DAVIS IS PROHIBITED.

PROJECT:

ARCHITECT:

CONTRACTOR:



9300 73rd Avenue North
Brooklyn Park, MN 55428

DESCRIPTION:

QuietFLEX®, 3/8", Aluminum, LDPE Hinge, Roll-up Mat with Cast in Place, Level Bed, Aluminum Frame

NAME	DATE	SIZE	DWG. NO.
DRAWN	DKL	4/14/15	A
RELEASED	PE	4/14/15	SCALE: NTS
			SHEET 1 OF 1
			REV B