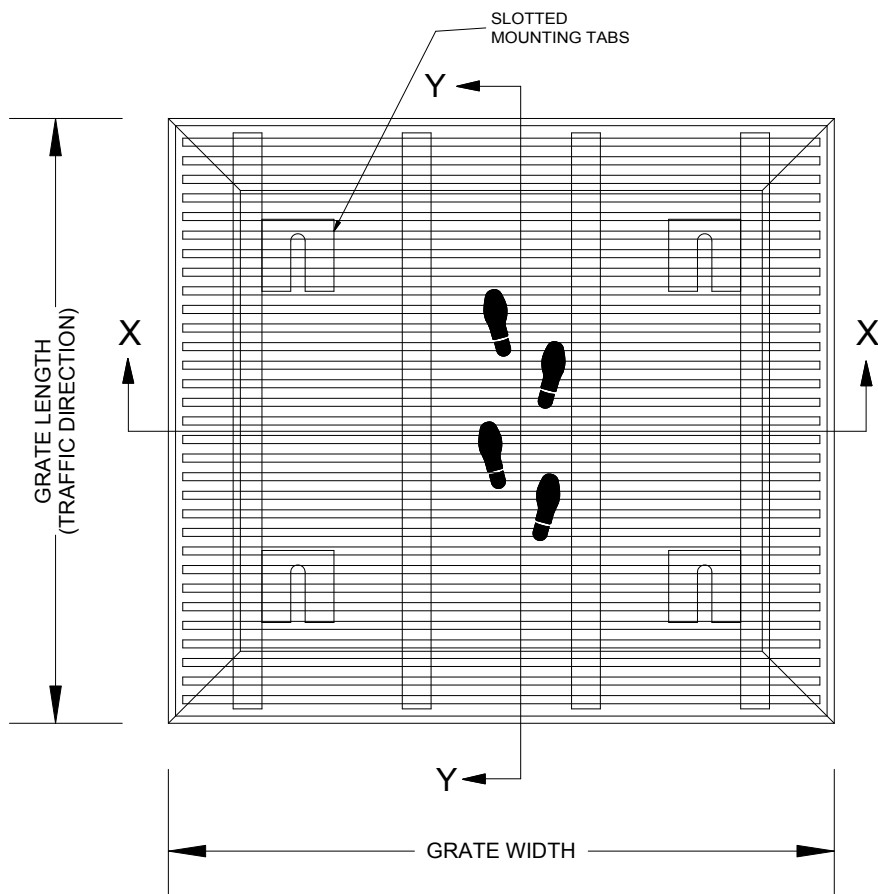


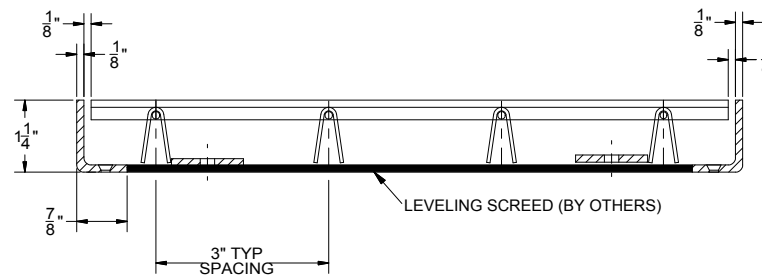
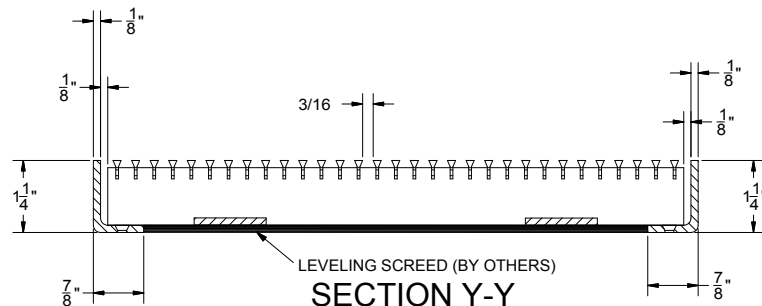
BGP98

QTY	MODEL	WIDTH	LENGTH	FINISH	LOCATION

B



B



A

A

NOTES:

- FRAME ANCHOR SPACING: 6" FROM CORNERS, 24" MAX
- ALL RAIL COMPONENTS ARE MADE OF TYPE 304 STAINLESS STEEL, ALL FRAME COMPONENTS ARE MADE OF TYPE 304 STAINLESS STEEL.
- NON-WELDED MECHANICALLY INTERLOCKED CONSTRUCTION
- GRATE IS MADE WITH .187" X .125" (3.6mm X 3.2mm) STAINLESS STEEL WIRE SPACED .1875 (4.8mm) O.C. AND WELDED SUPPORT RODS SPACED 3" (76.2mm) O.C.
- ADDITIONAL INFORMATION CAN BE FOUND IN THE PRODUCT SPECIFICATION AND IS CONSIDERED PART OF THIS TRANSMITTAL.
- FRAME PART NUMBER: BFP98LBM

PROJECT:			DESCRIPTION: ProGril, 9/8", Stainless Steel, Grate with 1-1/4" x 1/8", Mechanically Fastened, Stainless Steel Frame	
ARCHITECT:				
CONTRACTOR:				
<p>9300 73rd Avenue North Brooklyn Park, MN 55428</p>				
NAME	DATE	SIZE		
DRAWN	DKL	10/23/14		A
RELEASED	PE	10/23/14		
SCALE: NTS		SHEET 1 OF 1		
REV A				

PROPRIETARY AND CONFIDENTIAL: THE INFORMATION CONTAINED IN THIS DRAWING IS THE SOLE PROPERTY OF BABCOCK-DAVIS. ANY REPRODUCTION IN PART OR AS A WHOLE WITHOUT THE WRITTEN PERMISSION OF BABCOCK-DAVIS IS PROHIBITED.