

SPECIFICATIONS:

① DOOR:
ALUMINUM 1/4" DIAMOND PLATE, MILL FINISH WITH AN H20
LOAD RATING FOR INFREQUENT LOW SPEED TRAFFIC WITH A
MAX SPAN DEFLECTION OF L/150

② FRAME:
ALUMINUM, 1/4" EXTRUSION, GRAY PRIMER FINISH ON
EXTERIOR SURFACES THAT COME INTO CONTACT WITH
CONCRETE

③ HINGES: TYPE 316 STAINLESS STEEL

④ SLAM LATCH:
TYPE 316 STAINLESS STEEL WITH INSIDE LEVER HANDLE AND
OUTSIDE REMOVABLE HANDLE

⑤ COUNTER-BALANCE SPRING:
ENCLOSED, TYPE 17-7 SST SPRING

⑥ HOLD-OPEN ARM:
TYPE 316 STAINLESS STEEL WITH RED VINYL GRIP HANDLE

⑦ FLUSH LIFT HANDLE: TYPE 316 STAINLESS STEEL


⑧ DRAINAGE COUPLING: 1-1/2"

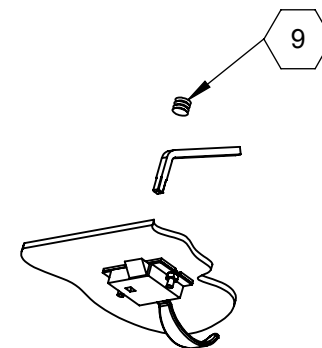
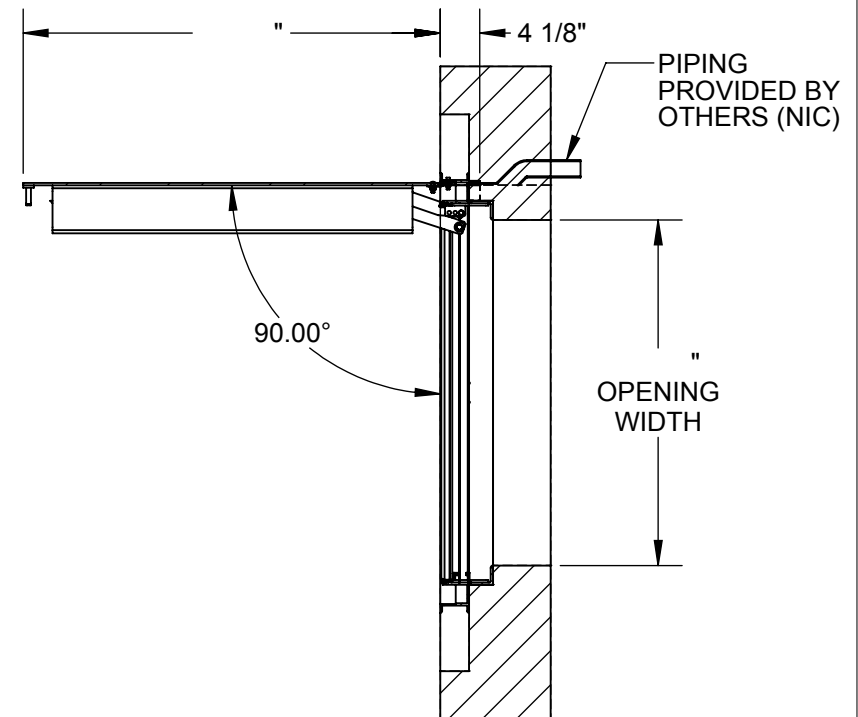
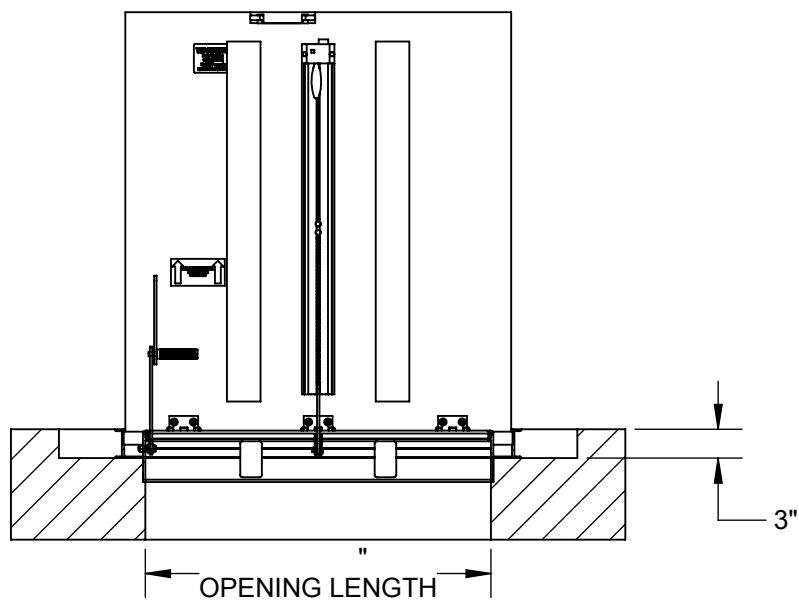
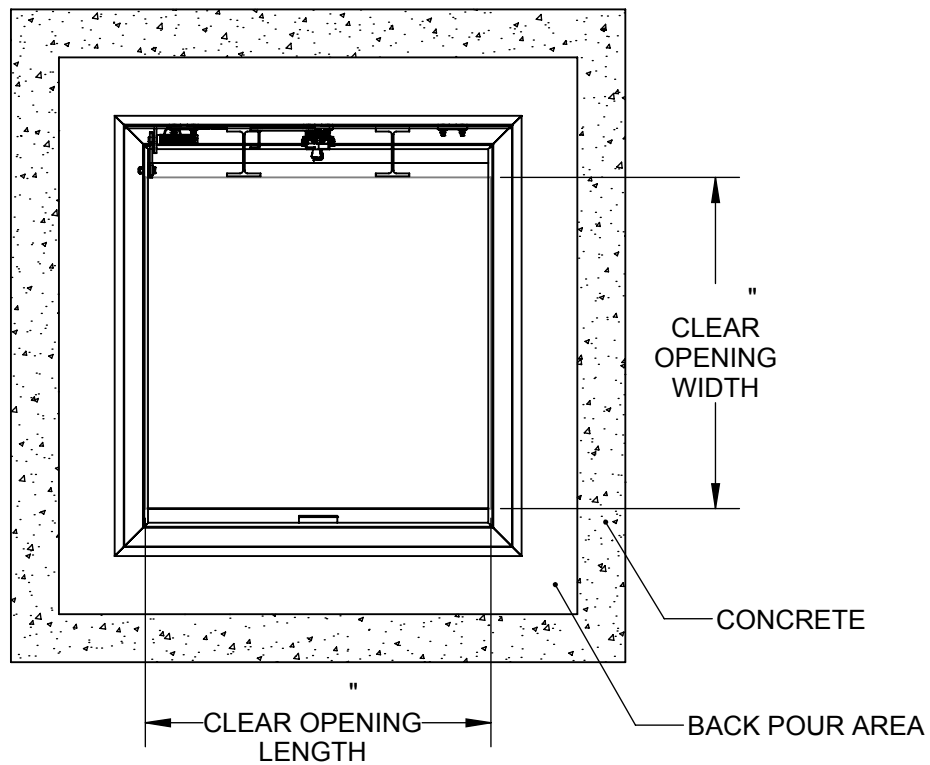
⑨ FLUSH TYPE PLUG SEAL: TYPE 316 STAINLESS STEEL

⑩ GASKET: EPDM

FLOOR DOOR SIZE:

PROPRIETARY AND CONFIDENTIAL: THE INFORMATION CONTAINED IN THIS DRAWING IS THE SOLE PROPERTY OF BABCOCK-DAVIS. ANY REPRODUCTION IN PART OR AS A WHOLE WITHOUT THE WRITTEN PERMISSION OF BABCOCK-DAVIS IS PROHIBITED.

PROJECT:					
ARCHITECT:					
CONTRACTOR:					
QTY:					
PART#:					
 9300 73rd Avenue North, Brooklyn Park, MN 55428				TITLE: FD, Drainable H20, Sngl Dr, Alum, 1/4" Dmd, Mill, Gutter Frame, Gray Primer, Cast-In	
	NAME	DATE	SIZE	DWG. NO.	REV
DRAWN	BES	4/11/19	A	Babcock FD BFDDHA_X_SFL ShpDr	A
RELEASED	BES	4/11/19	WEIGHT:	SHEET 1 OF 2	



SLAM LATCH DETAIL



9300 73rd Avenue North
Brooklyn Park, MN 55428

TITLE: FD, Drainable H20,
Sngl Dr, Alum, 1/4" Dmd,
Mill, Gutter Frame, Gray Primer, Cast-In

	NAME	DATE	SIZE	DWG. NO.	REV
DRAWN	BES	4/11/19	A	Babcock FD BFDDHA_X_SFL ShpDr	A
RELEASED	BES	4/11/19	WEIGHT:	SHEET 2 OF 2	