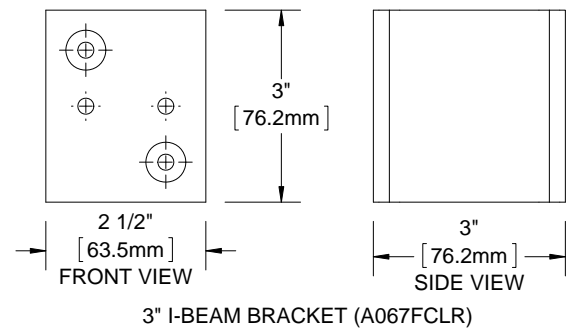
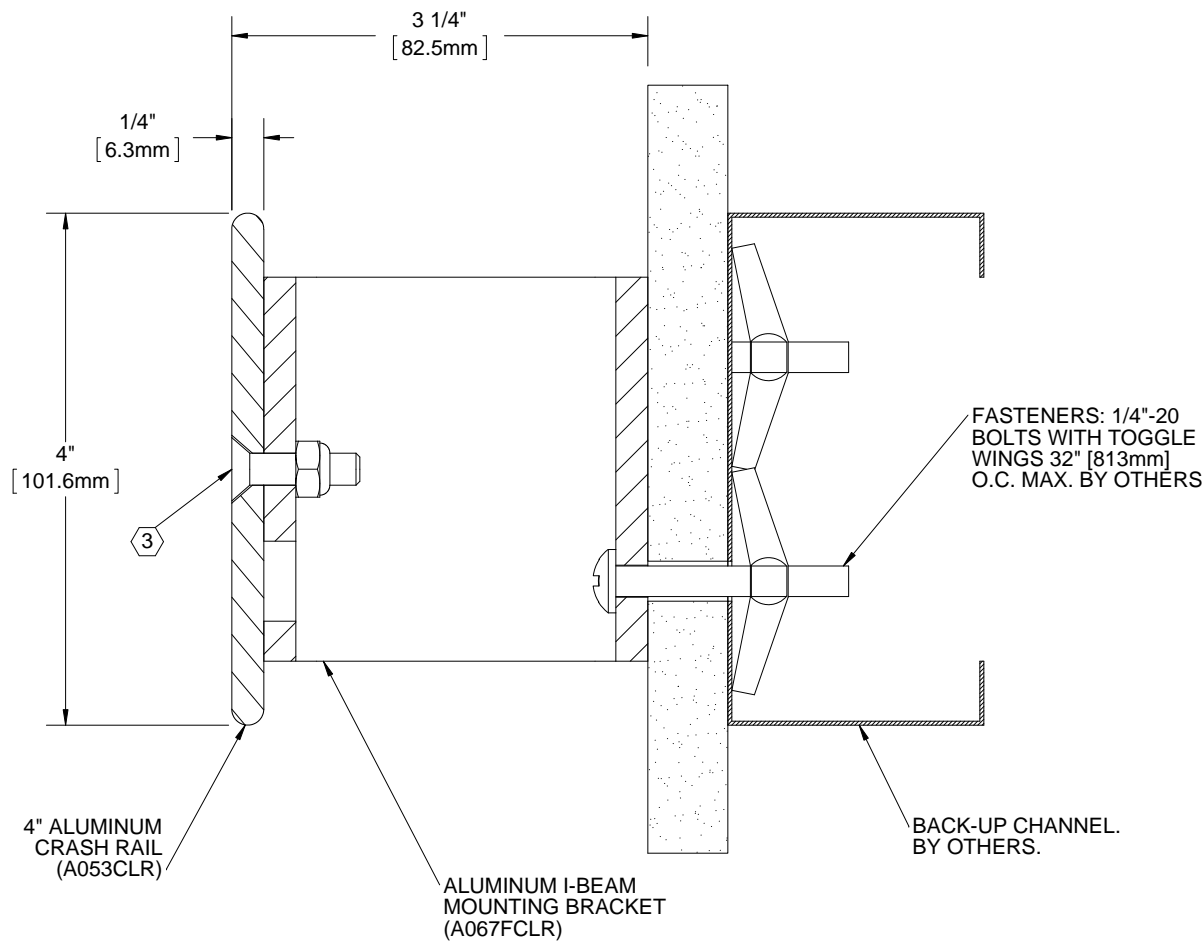


QUANTITY (FT)



**NOTES:**

- 1. MATERIAL: 6063-T5 ALUMINUM
- 2. FINISH: CLEAR ANODIZED
- ③ 1/4"-20 x 1" PHILLIPS FLAT HEAD STAINLESS STEEL SCREW (14201PFMS188) WITH LOCK NUT (1420NLN188), INCLUDED.
- 4. PROVIDED IN 12' CONTINUOUS LENGTHS, TO BE FIELD CUT AND DRILLED.
- 5. RETURNS AND CORNERS: PRE CUT AND DRILLED FOR FIELD INSTALLATION.  
 END CAP: # BCRAE4-BI3-EC  
 OUTSIDE CORNER: # BCRAE4-BI3-OC  
 INSIDE CORNER: # BCRAE4-BI3-IC
- 6. PARTITION COMPONENTS BY OTHERS.

PROJECT:			
ARCHITECT:			
CONTRACTOR:			
		TITLE: 4" ALUMINUM CRASH RAIL, EXTENDED, 3" I BEAM BRACKET, CLEAR ANODIZED FINISH	
		9300 73rd Avenue North Brooklyn Park, MN 55428	
NAME	DATE	SIZE	DWG. NO.
DKL	11/26/13	A	BCRAE4-BI3
RELEASED	PGE	11/26/13	WEIGHT: 1.7 LB/LF
			REV A
			SHEET 1 OF 1

PROPRIETARY AND CONFIDENTIAL: THE INFORMATION CONTAINED IN THIS DRAWING IS THE SOLE PROPERTY OF BABCOCK-DAVIS. ANY REPRODUCTION IN PART OR AS A WHOLE WITHOUT THE WRITTEN PERMISSION OF BABCOCK-DAVIS IS PROHIBITED.