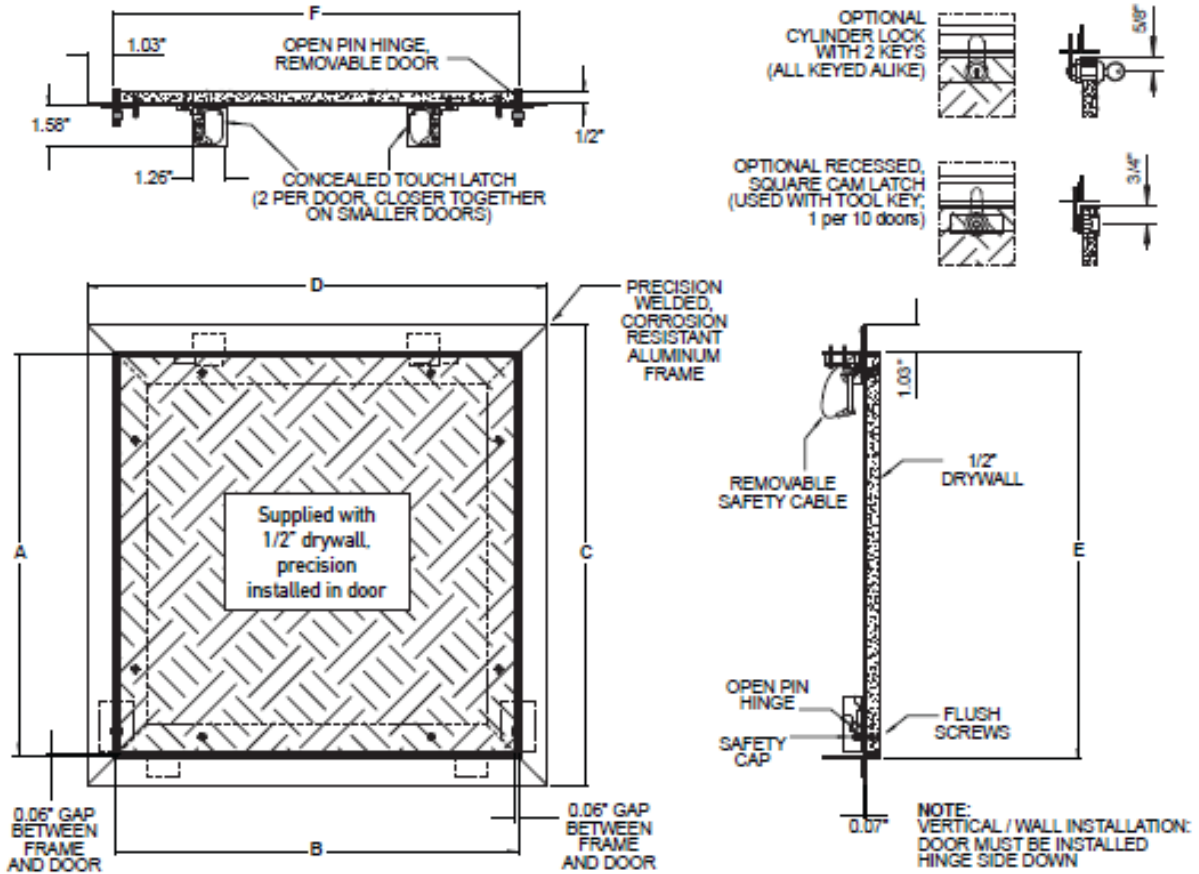


SPECIFICATIONS:

- CONCEALED TOUCH LATCH
- WELDED ALUMINUM FRAME
- WELDED ALUMINUM, OPEN HINGE, REMOVABLE DOOR
- PRE-INSTALLED PRECISION DRYWALL
- MILL FINISH
- NON-SNAG REMOVABLE SAFETY CABLE
- SUPPLIED TO FIT 1/2" DRYWALL
- ROUGH OPENING TO BE WIDTH/HEIGHT + 0.188"

OPTIONS:

- CYLINDER LOCK WITH 2 KEYS (ALL KEYED ALIKE)
- RECESSED SQUARE CAM LATCH (USE WITH TOOL KEY, 1 PER 10 DOORS)



| QTY. | NOMINAL SIZE | | A | | B | | C | | D | | E | | F | |
|------|--------------|-----------|-------|-----|-------|-----|-------|-----|-------|-----|-------|-----|-------|-----|
| | Inch | mm | Inch | mm | Inch | mm | Inch | mm | Inch | mm | Inch | mm | Inch | mm |
| | 8 x 8 | 203 x 203 | 8.00 | 203 | 8.00 | 203 | 10.20 | 258 | 10.20 | 258 | 8.14 | 207 | 8.14 | 207 |
| | 12 x 12 | 305 x 305 | 12.00 | 305 | 12.00 | 305 | 14.20 | 359 | 14.20 | 359 | 12.14 | 308 | 12.14 | 308 |
| | 16 x 16 | 406 x 406 | 16.00 | 406 | 16.00 | 406 | 18.20 | 461 | 18.20 | 461 | 16.14 | 410 | 16.14 | 410 |
| | 18 x 18 | 457 x 457 | 18.00 | 457 | 18.00 | 457 | 20.20 | 512 | 20.20 | 512 | 22.14 | 461 | 22.14 | 461 |
| | 20 x 20 | 508 x 508 | 20.00 | 508 | 20.00 | 508 | 22.20 | 562 | 22.20 | 562 | 20.14 | 512 | 20.14 | 512 |
| | 24 x 24 | 610 x 610 | 24.00 | 610 | 24.00 | 610 | 26.20 | 664 | 26.20 | 664 | 24.14 | 613 | 24.14 | 613 |
| | 24 x 36 | 610 x 915 | 24.00 | 610 | 36.00 | 915 | 26.20 | 664 | 38.20 | 969 | 24.14 | 613 | 36.14 | 919 |



9300 73RD AVENUE NORTH
BROOKLYN PARK, MN 55428

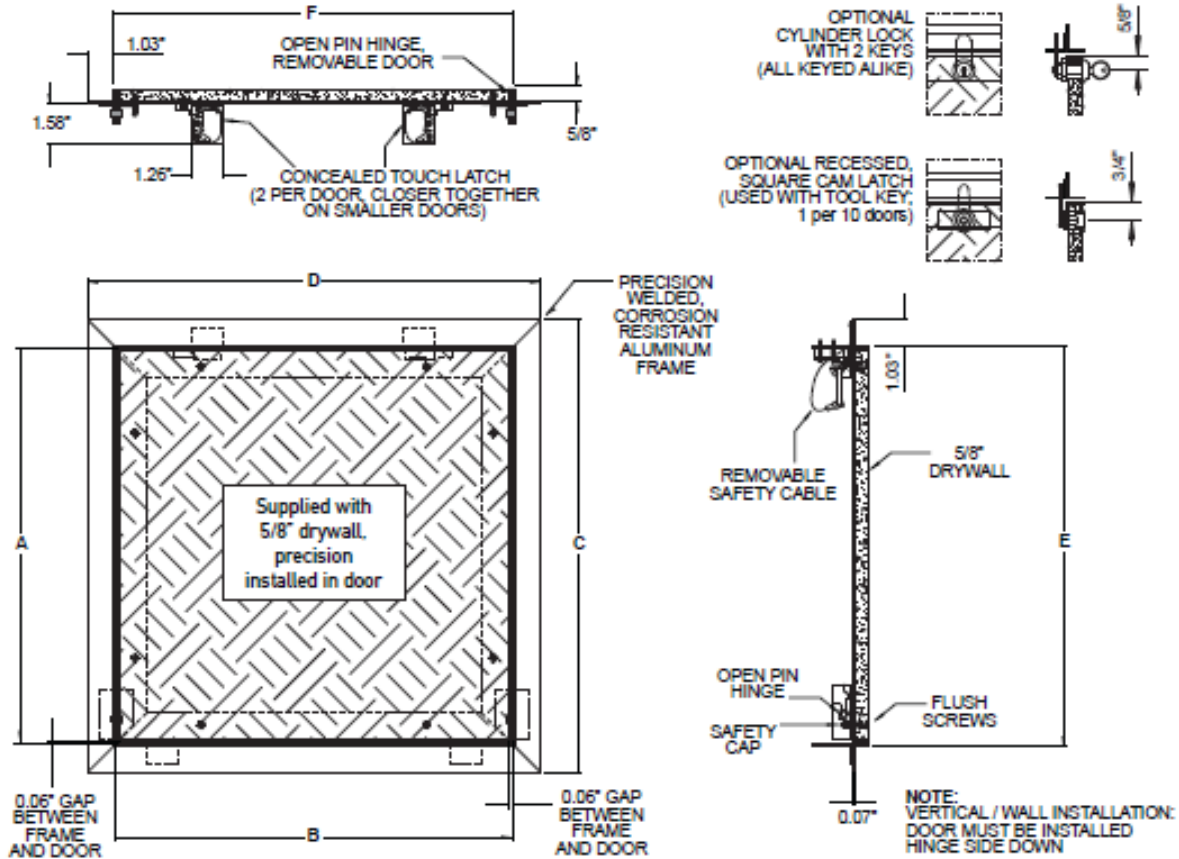
PH. (888) 412-3726
WWW.BABCOCKDAVIS.COM

SPECIFICATIONS:

- CONCEALED TOUCH LATCH
- WELDED ALUMINUM FRAME
- WELDED ALUMINUM, OPEN HINGE, REMOVABLE DOOR
- PRE-INSTALLED PRECISION DRYWALL
- MILL FINISH
- NON-SNAG REMOVABLE SAFETY CABLE
- SUPPLIED TO FIT 5/8" DRYWALL
- ROUGH OPENING TO BE WIDTH/HEIGHT + 0.188"

OPTIONS:

- CYLINDER LOCK WITH 2 KEYS (ALL KEYED ALIKE)
- RECESSED SQUARE CAM LATCH (USE WITH TOOL KEY, 1 PER 10 DOORS)



| QTY. | NOMINAL SIZE | | Inch A | | Inch B | | Inch C | | Inch D | | Inch E | | Inch F | |
|------|--------------|-----------|--------|-----|--------|-----|--------|-----|--------|-----|--------|-----|--------|-----|
| | Inch | mm | Inch | mm | Inch | mm | Inch | mm | Inch | mm | Inch | mm | Inch | mm |
| | 8 x 8 | 203 x 203 | 8.00 | 203 | 8.00 | 203 | 10.20 | 258 | 10.20 | 258 | 8.14 | 207 | 8.14 | 207 |
| | 12 x 12 | 305 x 305 | 12.00 | 305 | 12.00 | 305 | 14.20 | 359 | 14.20 | 359 | 12.14 | 308 | 12.14 | 308 |
| | 16 x 16 | 406 x 406 | 16.00 | 406 | 16.00 | 406 | 18.20 | 461 | 18.20 | 461 | 16.14 | 410 | 16.14 | 410 |
| | 18 x 18 | 457 x 457 | 18.00 | 457 | 18.00 | 457 | 20.20 | 512 | 20.20 | 512 | 22.14 | 461 | 22.14 | 461 |
| | 20 x 20 | 508 x 508 | 20.00 | 508 | 20.00 | 508 | 22.20 | 562 | 22.20 | 562 | 20.14 | 512 | 20.14 | 512 |
| | 24 x 24 | 610 x 610 | 24.00 | 610 | 24.00 | 610 | 26.20 | 664 | 26.20 | 664 | 24.14 | 613 | 24.14 | 613 |
| | 24 x 36 | 610 x 915 | 24.00 | 610 | 36.00 | 915 | 26.20 | 664 | 38.20 | 969 | 24.14 | 613 | 36.14 | 919 |



9300 73RD AVENUE NORTH
BROOKLYN PARK, MN 55428

PH. (888) 412-3726
WWW.BABCOCKDAVIS.COM