



1-1/2 inch Bumper Guard

Model(s): BBGVS15C-P

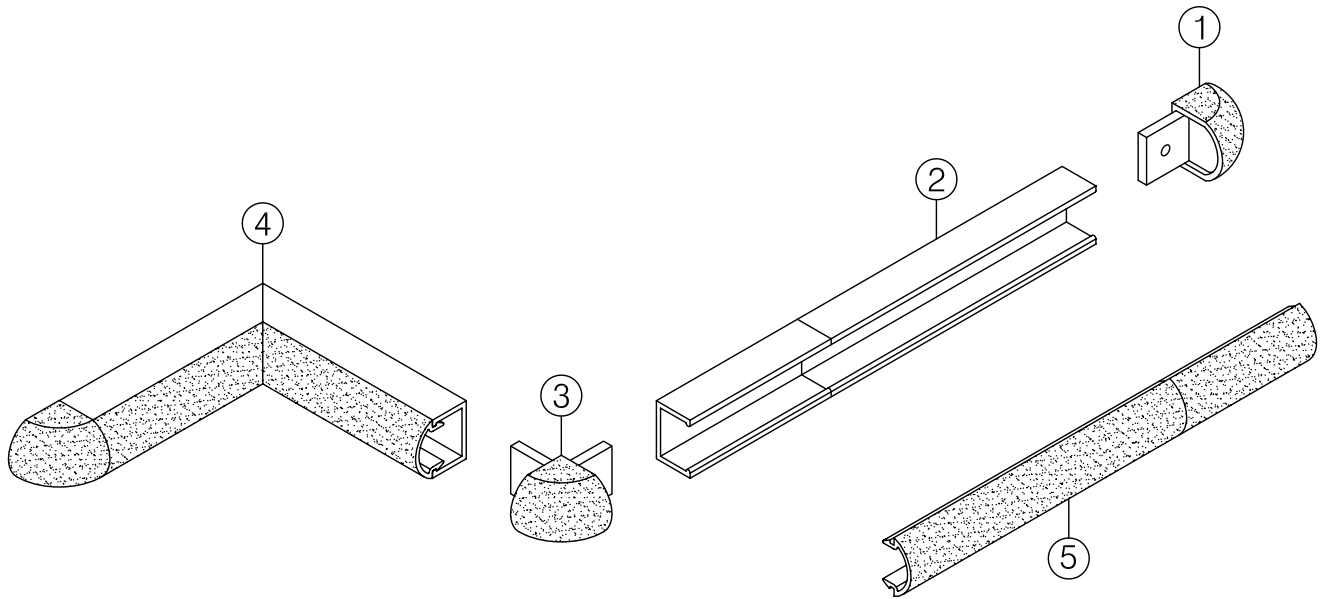


Table of Contents

General Description.....3
 Installation.....4-7
 Parts List.....8
 Maintenance.....9
 Standard Warranty.....10
 Factory Assistance.....11

Copyright

2017 by Babcock-Davis. All rights reserved.

This document contains proprietary information. No part of this document may be reproduced without the prior written consent of Babcock-Davis.

Note

The information in this document is subject to change without notice.

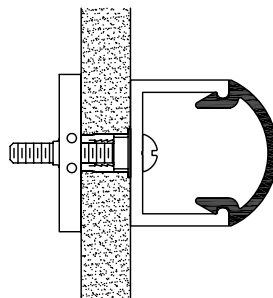
General Safety Precautions

Improper selection, installation, or use can cause personal injury or property damage. It is solely the responsibility of the user, through its own analysis to select products suitable for their specific application requirements, ensure they are properly maintained, and limit their use to its intended purpose.

Follow proper local, state and federal regulations for proper installation and operation requirements.

GENERAL DESCRIPTION

Vinyl bumper guards are designed for years of safe building use. Proper installation of the handrails are critical to the product's performance. The following are general instructions for installing, maintaining and cleaning vinyl bumper guards. These are recommended general guidelines only. Locally accepted installation practices and procedures should be followed to ensure a system that meets all local code requirements.



INSTALLATION

Preparation: Verify that all products listed on the packaging slip are included in the package. Check the products for damage. If product is damaged, contact customer support immediately to report a freight claim.

Store material in a clean dry place where the temperature is maintained above 50°F (10°C). Walls and rooms should be maintained at a minimum of 65°F (18°C) for at least 48 hours prior to installation. Acclimate materials to normal building conditions for at least 24 hours before cutting and installing.

Step 1 Determine top of bumper guard and snap a chalk line to locate top of retainer, see **fig. 1**.

Step 2 Cut retainer. See **Cutting Adjustment Diagrams and Schedule** for adjustments to retainer length at end caps, inside corners, and outside corners. Refer to **Minimum Layout Configurations** and for additional information. Retainer should be mitered to accommodate outside corners that are not 90° and all inside corners. All cuts must be square and deburred.

The aluminum is supplied in a plastic sleeve, see **fig. 3a**, or with a protective “peel-off” coating on one side, see **fig. 3b**, to prevent damage to the anodized surface. Be sure to orient the best surface or “peel-off” coating toward the most exposed or visible direction.

Step 3 Pre-drill clearance holes in aluminum retainer along the centerline of the retainer using a #15 (.180 inch) bit for #8 fastener or a #7 (.201 inch) bit for #10 and 3/16 inch fasteners, see **fig. 2**. Space holes at 32 inches on center. Adjust spacing to accommodate studs as necessary. Do not pre-drill at locations that will interfere with installation of molded accessories.

Drill point fasteners may be used without pre-drilling retainer on drywall installations having continuous metal backer or studs. Continue to pre-drill at locations where no backing or stud is available.

Step 4 Pre-drill for attachment of molded accessories by inserting accessory in end of retainer. Press firmly to ensure molded part is seated squarely against the aluminum.

- Drywall Installation: Using the accessory as a template, pre-drill clearance holes for mounting through metal backer or stud or pre-drill pilot holes using #29 (.136 inch) bit for #8 fastener or a #21 bit (.159 inch) for #10 fastener for attaching accessories directly to retainer, see **fig. 4**.
- Masonry Installation: Using the accessory as a template, pre-drill clearance holes at mounting locations, see **fig. 4**.

INSTALLATION

Step 5 Fasten retainer to wall using hardware listed below. Align top edge of retainer with chalk line.

Important: Begin installation of retainer at corners allowing for molded accessories. Use the appropriate accessory as a spacing template. See **Cutting Adjustment Diagrams and Schedule** for additional information. Do not fasten through holes pre-drilled for installation of molded accessories until accessories are installed in **Step 6**.

- **Drywall Installation:** Fasten retainer to wall using hardware listed below. If it is necessary to install fasteners in locations where there is no metal backing or stud, use pre-drilled retainer as a template to mark and drill wall for Toggler brand toggle bolts or plastic Alligator insert in accordance with instructions provided with hardware.
- **Masonry Installation:** Using the pre-drilled retainer as a template, mark and drill the wall at all pre-drilled holes to accept plastic Alligator insert or 3/16 inch Tapcon or similar fastener. Drill in accordance with instructions provided with hardware.

Suggested hardware

• Drywall with metal backing	#8 or #10 drill point drywall screw, pan head or hex washer head sheet metal screw.
• Drywall without stud or backing	Plastic Alligator insert with #8 or #10 pan head or hex washer sheet metal screw or 3/16 inch Toggler brand toggle bolts with pan head machine screw.
• Masonry	Plastic Alligator insert with #8 or #10 pan head washer head sheet metal screw or 3/16 inch hex washer head Tapcon.

Step 6 Secure accessory components in place using hardware selected in **Step 5**.

Caution: Use of a flat washer at accessory mounting tabs is recommended to prevent damage to molded part caused by excessive tightening of the fastener.

Step 7 Measure between the accessories and cut the vinyl cover accordingly. Miter cut the cover for all angles not accommodated by the molded accessories. All cuts must be square and deburred.

Step 8 Snap the vinyl cover in place.

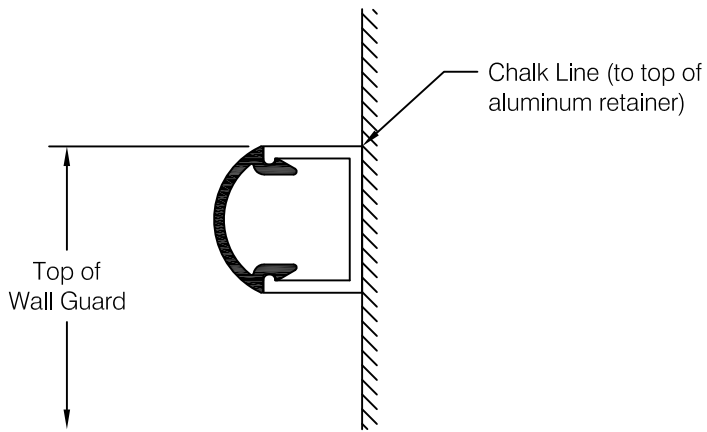


fig 1

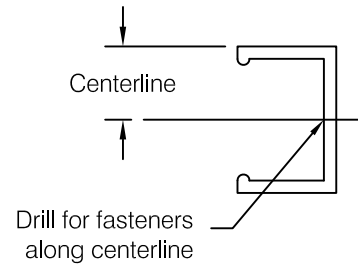


fig 2

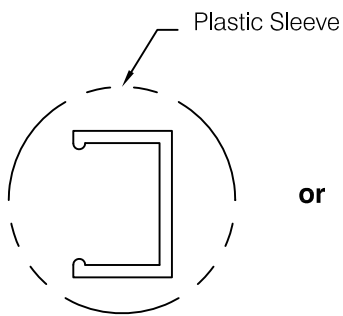


fig 3a

or

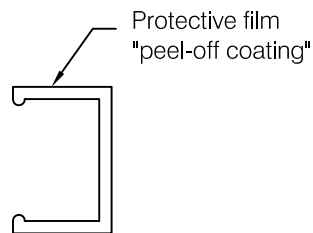


fig 3b

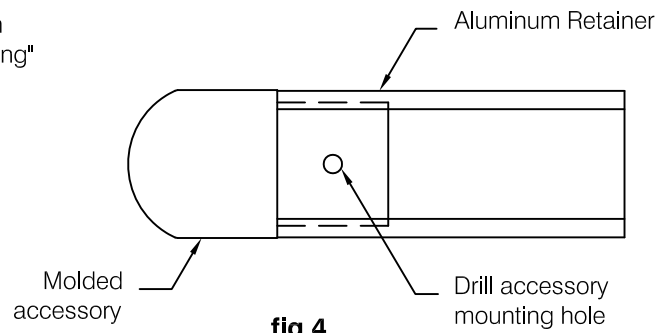
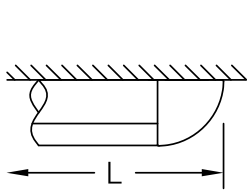
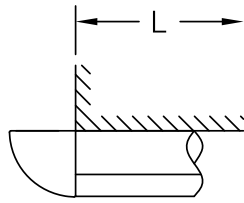


fig 4

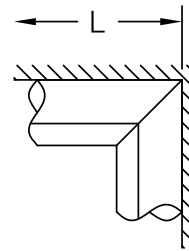
CUTTING ADJUSTMENT DIAGRAMS AND SCHEDULE



End Cap



Outside Corner

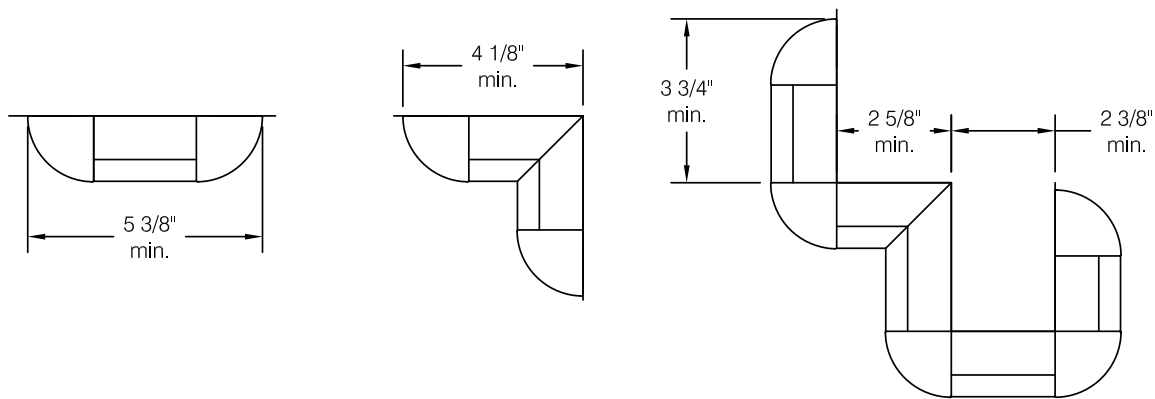


Inside Corner

	RETAINER	COVER
End Cap	L - 1-1/2"	L - 1-1/2"
Outside Corner	L - 0"	L - 0"
Inside Corner	L - 0" (field miter)	L - 0" (field miter)

Important: Install retainer and molded accessories before cutting the snap-on cover

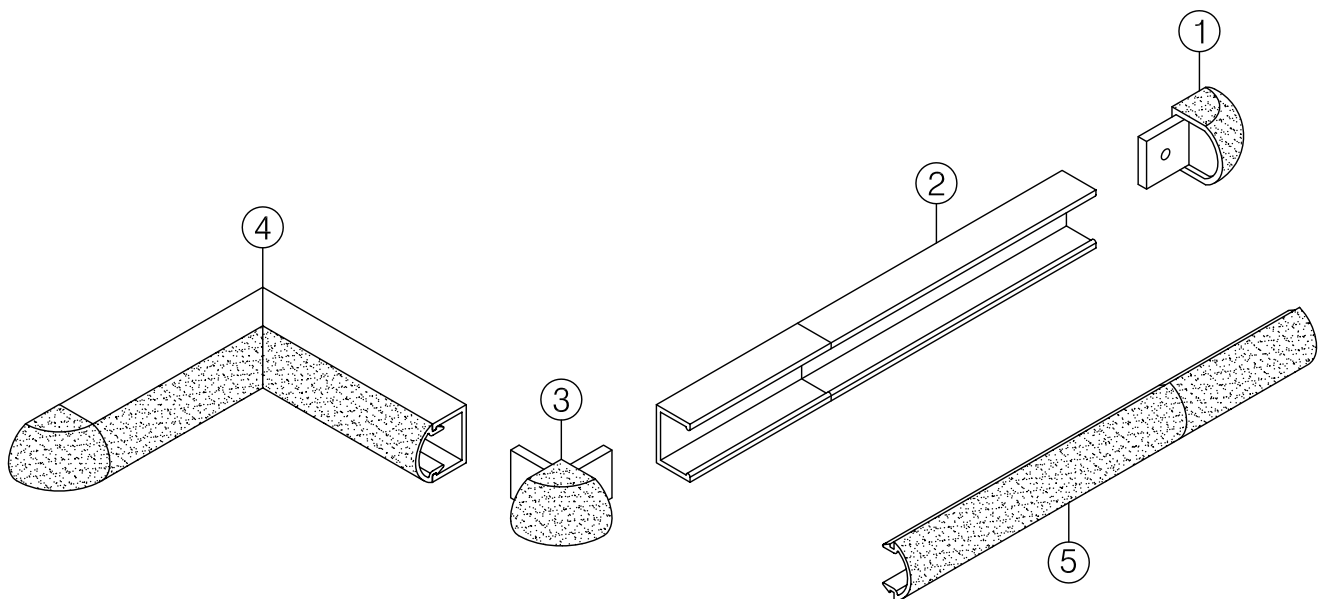
MINIMUM LAYOUT CONFIGURATIONS



PARTS LIST

Diagram #	Part Number	Description
1	BBGVS15C-EC-P	LEFT/RIGHT END CAP
2	BBGVS15C-B15-P	ALUMINUM RETAINER
3	BBGVS15C-OC-P	OUTSIDE CORNER
4		MITERED CORNER
5	BBGVS15C-VC-P	SNAP ON VINYL COVER

When ordering, please specify color name. Current color charts are available on www.BabcockDavis.com.



MAINTENANCE

- Do not use ammonia based cleaner, powdered cleaners or bleach; they can leave a residue if not rinsed properly. Use a liquid cleaner, such as SoftScrub without bleach, Fantastic, 409, etc., on a sponge or a soft cloth; use a stiff bristle brush to remove heavy dirt from the textured surface if necessary. Always rinse with clean water and dry with a soft cloth.
- For heavy-duty cleaning (graffiti, etc.) use a stronger cleaning agent, such as “Crown Anti-Vandal Spray”, or the equivalent. Follow the same procedures noted above, always rinsing all areas thoroughly in clean water and drying completely.
- Do not use water with extremely high temperature and do not use steam to clean vinyl because it may cause blistering and/or warping.
- Do not use abrasive cleaners or other cleaning implements, such as steel wool or cleaning pads, as they may mark or gouge the material.
- To add luster and additional protection, you can apply a thin layer of a vinyl enhancer, such as Pledge.
- Please contact manufacturer for technical support questions and/or replacement parts such as repair kits.

STANDARD WARRANTY

Babcock-Davis warrants all Wall and Door Protection to be free from manufacturing defects in materials, factory finishes and workmanship for a period of five (5) years from the date of shipment. Should a product fail to function in normal use within this period, Babcock-Davis shall furnish a replacement or new part at Babcock-Davis' discretion. Failure to use product in methods consistent with Babcock-Davis product manuals shall relieve Babcock-Davis of any liability. Our liability under this warranty excludes installation or removal costs involved in the product replacement and excludes any responsibility for incidental or consequential damage of any nature.

For warranty support and registration please visit
www.BabcockDavis.com/support

FACTORY ASSISTANCE

Babcock-Davis engineers and manufactures access doors for worldwide customers. Our products enable safe access to mechanical equipment. Recognized as an industry leader, Babcock-Davis has been relied upon by building and construction professions for over 100 years and we pride ourselves in offering exceptional technical support.

Please do not return any product before discussing your application problem with a Babcock-Davis representative and obtaining a Return Authorization.

Your Babcock-Davis representative is eager to help you. Please feel free to call your representative or contact Babcock-Davis to discuss your application.

Babcock-Davis
9300 73rd Avenue North
Brooklyn Park, MN 55428

Phone: 888.412.3726
Fax: 888.312.3726
Email: info@BabcockDavis.com

Visit www.Babcock-Davis.com for the latest version of this document and more information.

Great Products.
Better Partners.



9300 73RD AVENUE NORTH
BROOKLYN PARK, MN 55428

(888) 412-3726
(888) 312-3726 FAX

WWW.BABCOCKDAVIS.COM