

Ribbed EcoTread™

STAIR TREAD + NOSING

The single-part Ribbed EcoTread™ Stair Tread and Nosing is the industry's first sustainable and eco-friendly nosing. This nosing is engineered with recycled aluminum and rubber, is available in multiple color options and can be used in both interior and exterior applications.



BSTSB-P3E-ECO shown

FEATURES

RECYCLED + RECYCLABLE These sustainable treads are made from up to 90% recycled rubber and the entire system is 100% recyclable.

FADE + WEAR RESISTANT A durable product that will stand up to weather extremes and foot traffic.

EASY TO CLEAN + MAINTAIN These stain and chemical resistant treads are coated with a water-based protectant.

DETAILS

CHANNEL Extruded Aluminum

APPLICATION Poured Concrete, Steel Pan, Terrazzo or Wood

TREAD Ribbed EcoTread™

WIDTH 1-7/8, 3 or 4 inches

LENGTH Up to 12 linear feet

MOUNTING Anchor or Drilled Hole, Mech. Fastened

NOSING Short, Short-Tipped, Long or Angled

OPTIONS Stair Nosing Guards™*, Photoluminescent, Vision Line, Mitered Cuts, Painted Undersides or Taped Tops

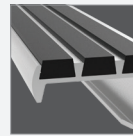
CODE COMPLIANCE 2010 ADA 504, 2015 IBC/ICC Section 1029.13.2, 2018 IBC/ICC Section 1029.14.2, and 2016 California Building Code Section 11B-504.5

MODELS

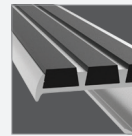
MODEL	WIDTH	NOSING	INSTALL
BSTSB-C1.875E-ECO	1-7/8"	Short	Cast-In, Extruded Anchor
BSTSB-C1.875D-ECO	1-7/8"	Short	Drilled Hole, Mech. Fastened
BSTSB-P1.875E-ECO	1-7/8"	Short-Tipped	Cast-In, Extruded Anchor
BSTSB-P1.875D-ECO	1-7/8"	Short-Tipped	Drilled Hole, Mech. Fastened
BSTSB-L1.875E-ECO	1-7/8"	Long	Cast-In, Extruded Anchor
BSTSB-L1.875D-ECO	1-7/8"	Long	Drilled Hole, Mech. Fastened
BSTSB-A1.875D-ECO	1-7/8"	Angled-Long	Drilled Hole, Mech. Fastened
BSTSB-C3E-ECO	3"	Short	Cast-In, Extruded Anchor
BSTSB-C3D-ECO	3"	Short	Drilled Hole, Mech. Fastened

*Stair Nosing Guards™ available on 3" short-tipped nosings only, models BSTSB-P3E and BSTSB-P3D.

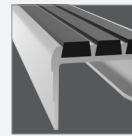
NOSING



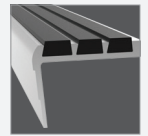
Short



Short-Tipped

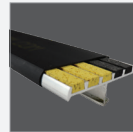


Long

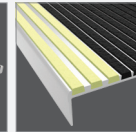


Angled Long

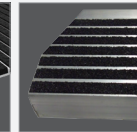
OPTIONS



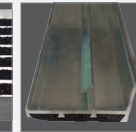
Stair Nosing Guards™*



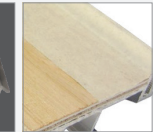
Vision Line



Mitered Cuts



Painted Undersides



Taped Tops

MODELS

MODEL	WIDTH	NOSING	INSTALL
BSTSB-P3E-ECO	3"	Short-Tipped	Cast-In, Extruded Anchor
BSTSB-P3D-ECO	3"	Short-Tipped	Drilled Hole, Mech. Fastened
BSTSB-L3E-ECO	3"	Long	Cast-In, Extruded Anchor
BSTSB-L3D-ECO	3"	Long	Drilled Hole, Mech. Fastened
BSTSB-A3E-ECO	3"	Angled-Long	Cast-In, Extruded Anchor
BSTSB-A3D-ECO	3"	Angled-Long	Drilled Hole, Mech. Fastened
BSTSB-C4E-ECO	4"	Short	Cast-In, Extruded Anchor
BSTSB-C4D-ECO	4"	Short	Drilled Hole, Mech. Fastened
BSTSB-P4E-ECO	4"	Short-Tipped	Cast-In, Extruded Anchor
BSTSB-P4D-ECO	4"	Short-Tipped	Drilled Hole, Mech. Fastened