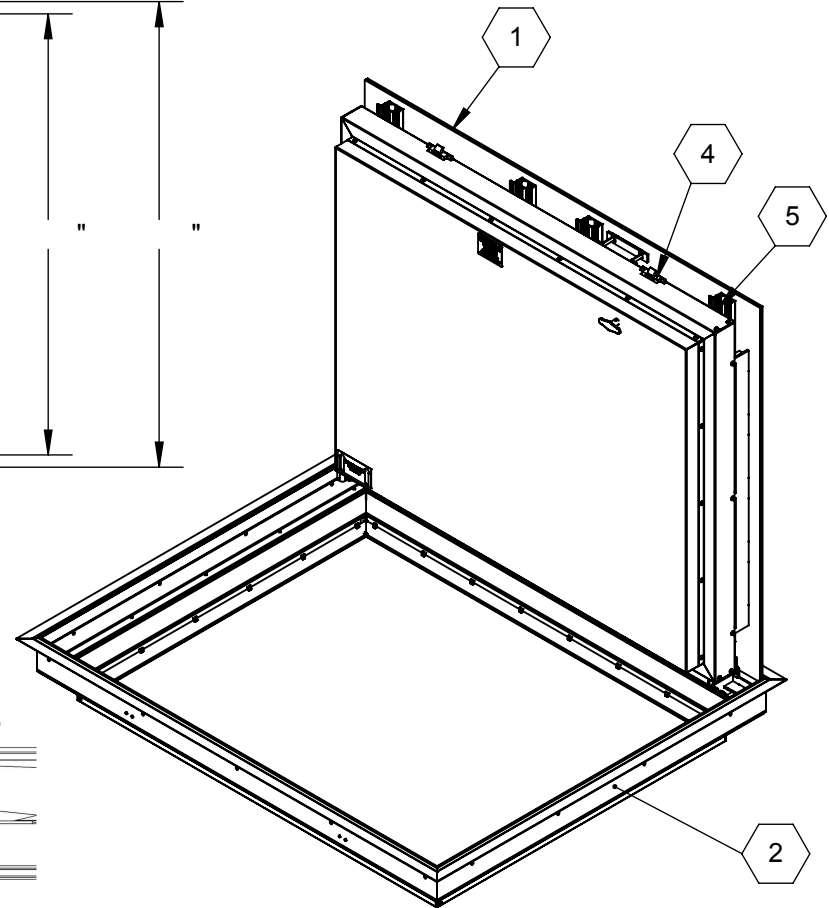


HINGE SIDE TILE TRIM
GAP DETAIL



SPECIFICATIONS:

- ① DOOR:**
ALUMINUM 1/4" SMOOTH PLATE WITH 1/8" TILE EXTRUSION RECESS FOR FLOORING INFILL, MILL FINISH WITH A LIVE LOAD OF 250PSF WITH A MAX SPAN DEFLECTION OF L/150
- ② FRAME:**
ALUMINUM, 1/4" EXTRUSION, GRAY PRIMER FINISH ON EXTERIOR SURFACES THAT COME INTO CONTACT WITH CONCRETE
- ③ HINGES:** TYPE 316 STAINLESS STEEL
- ④ SLAM LATCH:**
ZINC-PLATED STEEL WITH INSIDE HANDLE MECHANISM AND OUTSIDE REMOVABLE HANDLE
- ⑤ COUNTER-BALANCE SPRING:**
ENCLOSED, TYPE 17-7 SST SPRING
- ⑥ HOLD-OPEN ARM:** TYPE 316 STAINLESS STEEL
OPTIONAL SELF-CLOSING MECHANISM


- ⑦ ANCHOR:** BOLT-ON ANCHOR STRAPS PROVIDED
- ⑧ PLUG SEAL:** TYPE 316 STAINLESS STEEL

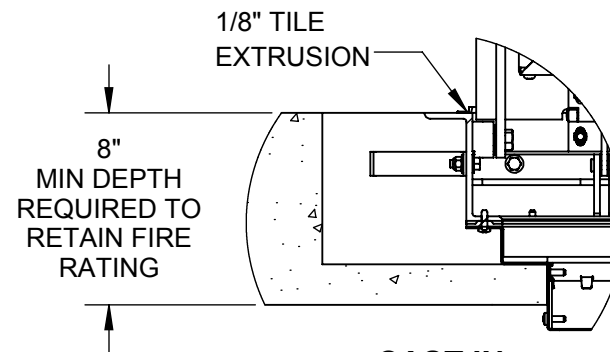
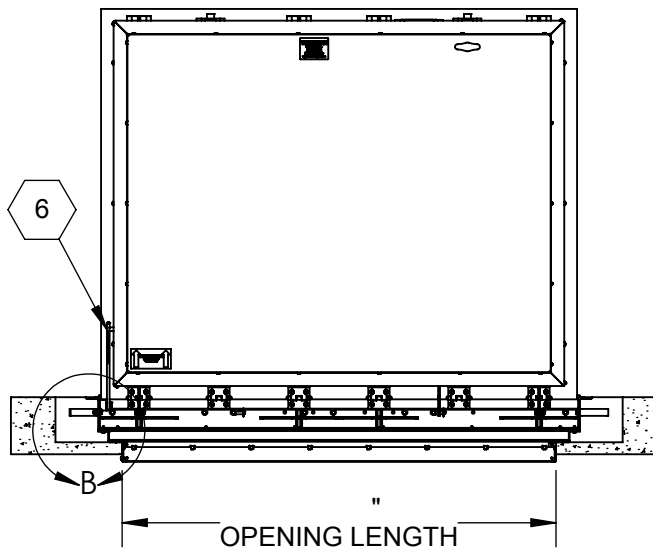
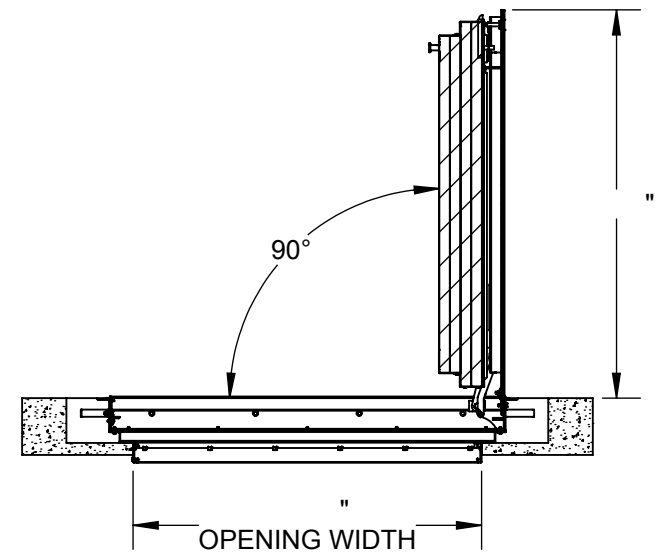
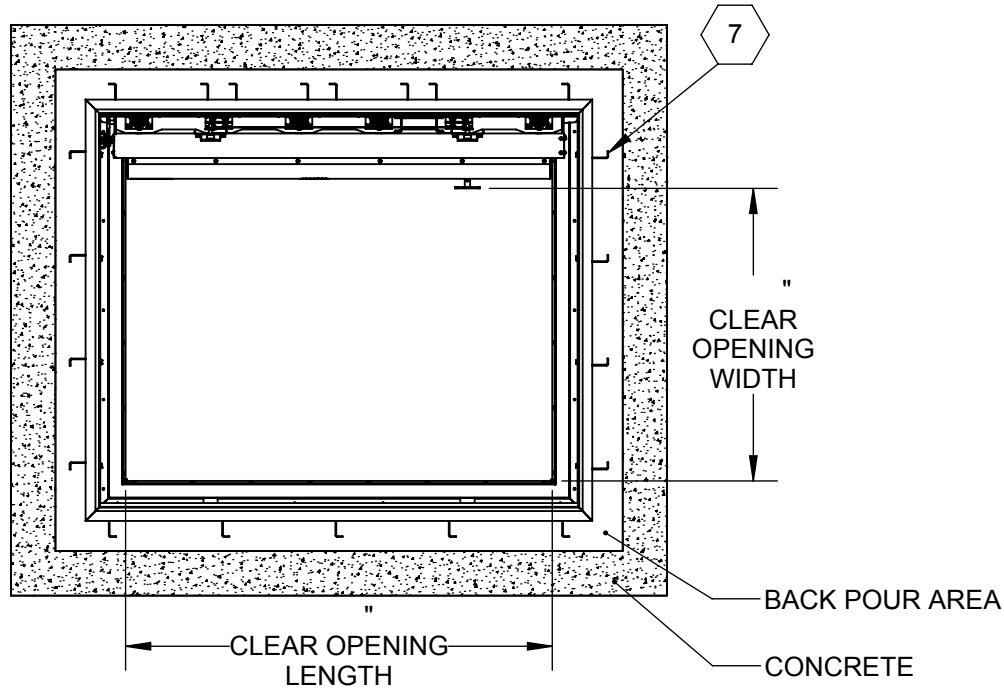
CERTIFICATION: 3-HOUR FIRE RATED, WARNOCK HERSEY LABELED AND TESTED TO NFPA 288: STD METHODS OF FIRE TEST OF HORIZONTAL FIRE DOOR ASSEMBLIES. MAX TEMPERATURE RISE OF 250F.

APPLICATION NOTE: FLOOR DOOR MUST BE KEPT DRY BEFORE, DURING, AND AFTER INSTALLATION. FOR DRY, INTERIOR INSTALLATION ONLY. NOT INTENDED FOR EXTERIOR OR WET ENVIRONMENTS.

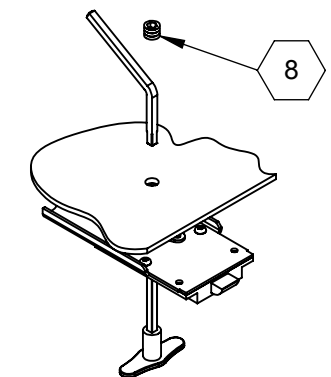
FLOOR DOOR SIZE:

PROPRIETARY AND CONFIDENTIAL: THE INFORMATION CONTAINED IN THIS DRAWING IS THE SOLE PROPERTY OF BABCOCK-DAVIS. ANY REPRODUCTION IN PART OR AS A WHOLE WITHOUT THE WRITTEN PERMISSION OF BABCOCK-DAVIS IS PROHIBITED. ©2020 BABCOCK-DAVIS

PROJECT:			
ARCHITECT:			
CONTRACTOR:			
QTY:			
PART#:			
 9300 73rd Avenue North brooklyn Park, MN 55428		TITLE: FD, 3hr Fire Rated, 250 psf, Sngl Dr, Alum, 1/4" Smth Plt, 1/8" Tile, Mill, Angle Frame, Gray Primer, Cast-In, SST Spring Asst, 316 SST HDW, Slam Latch w/Hdl	
NAME	DATE	SIZE	DWG. NO.
DRAWN BES	1/07/21	A	Babcock FD BFDFPA_X_SWL-3HR-T1 ShpDr
RELEASED BES	1/07/21	WEIGHT:	
			REV
			SHEET 1 OF 2



CAST IN DETAIL



SLAM LATCH DETAIL



9300 73rd Avenue North
brooklyn Park, MN 55428

TITLE: FD, 3hr Fire Rated, 250 psf,
, Sngl Dr, Alum, 1/4" Smth Plt, 1/8" Tile,
Mill, Angle Frame, Gray Primer, Cast-In,
SST Spring Asst, 316 SST HDW, Slam Latch w/Hdl

	NAME	DATE	SIZE	DWG. NO.	REV
DRAWN	BES	1/07/21	A	Babcock FD BDFDPA_X_SWL-3HR-T1 ShpDr	
RELEASED	BES	1/07/21	WEIGHT:		SHEET 2 OF 2