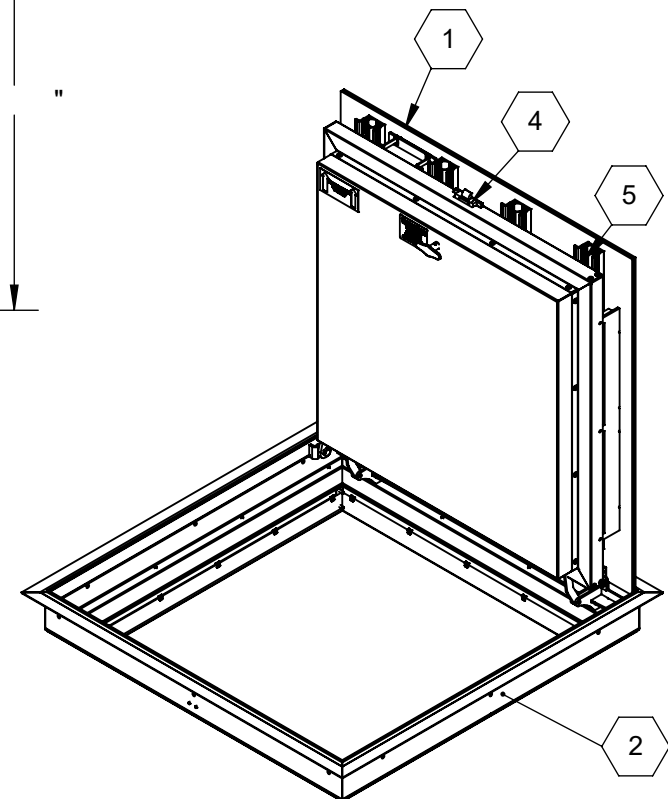


HINGE SIDE TILE TRIM
GAP DETAIL



SPECIFICATIONS:


- ① **DOOR:**
ALUMINUM 1/4" SMOOTH PLATE WITH 1/8" TILE EXTRUSION
RECESS FOR FLOORING INFILL, MILL FINISH WITH A LIVE LOAD
OF 150PSF WITH A MAX SPAN DEFLECTION OF L/150
- ② **FRAME:** ALUMINUM, 1/4" EXTRUSION
- ③ **HINGES:** TYPE 316 STAINLESS STEEL
- ④ **SLAM LATCH:**
ZINC-PLATED STEEL WITH INSIDE HANDLE MECHANISM AND
OUTSIDE REMOVABLE HANDLE
- ⑤ **COUNTER-BALANCE SPRING:**
ENCLOSED, TYPE 17-7 SST SPRING
- ⑥ **HOLD-OPEN ARM:** TYPE 316 STAINLESS STEEL
OPTIONAL SELF-CLOSING MECHANISM

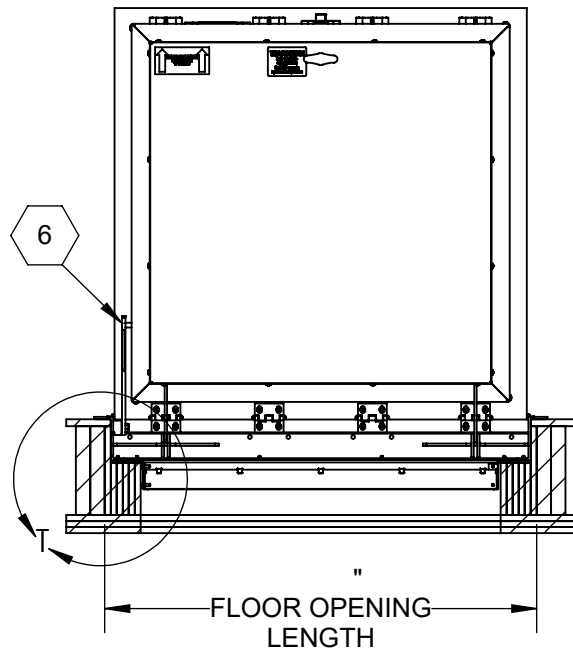
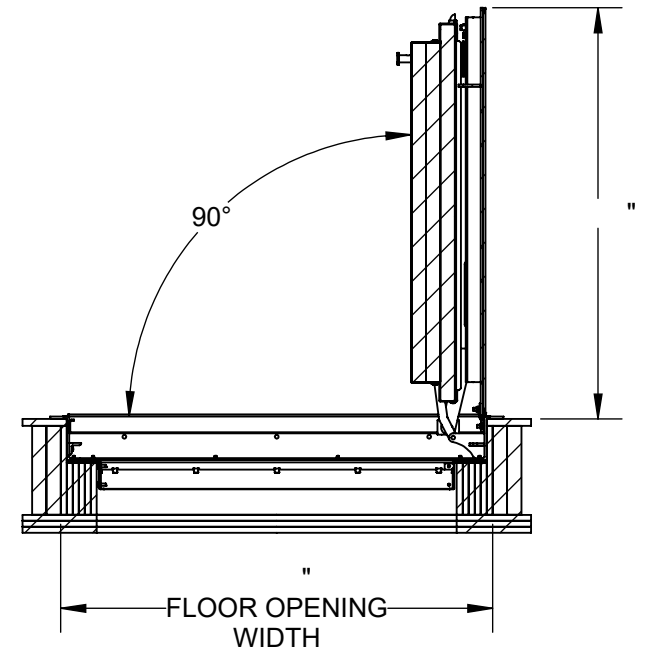
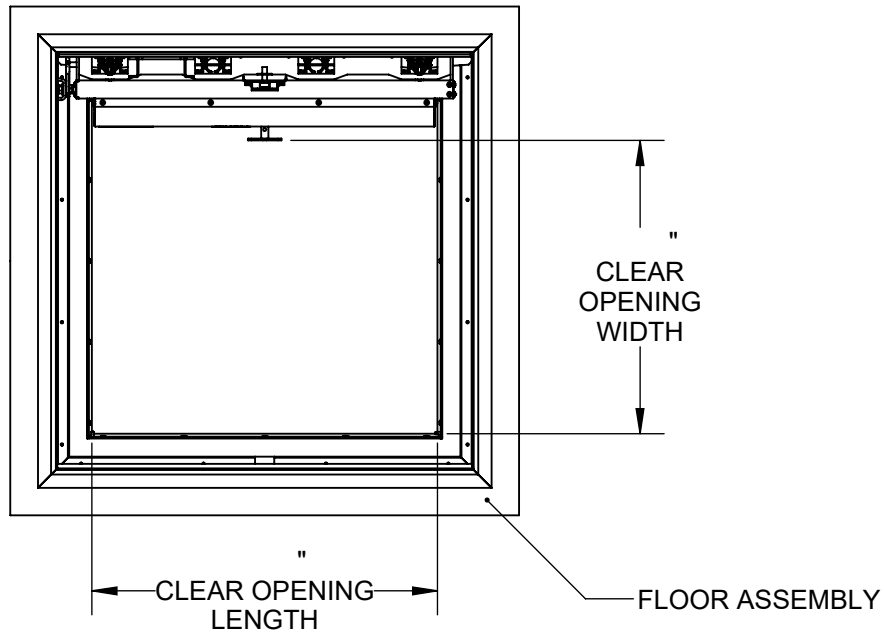
- ⑦ **ANCHOR:** 3/8" HOLES PROVIDED, BOLTS SUPPLIED BY OTHERS
- ⑧ **PLUG SEAL:** TYPE 316 STAINLESS STEEL

CERTIFICATION: 2-HOUR FIRE RATED, WARNOCK HERSEY LABELED AND
TESTED TO NFPA 288: STD METHODS OF FIRE TEST OF HORIZONTAL FIRE
DOOR ASSEMBLIES. MAX TEMPERATURE RISE OF 250F.

APPLICATION NOTE: FLOOR DOOR MUST BE KEPT DRY BEFORE, DURING,
AND AFTER INSTALLATION. FOR DRY, INTERIOR INSTALLATION ONLY. NOT
INTENDED FOR EXTERIOR OR HUMID ENVIRONMENTS

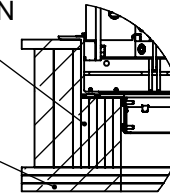
FLOOR DOOR SIZE:

PROJECT:					
ARCHITECT:					
CONTRACTOR:					
QTY:					
PART#:					
 9300 73rd Avenue North Brooklyn Park, MN 55428				TITLE: FD, 2hr Fire Rated, 150 psf, , Sngl Dr, Alum, 1/4" Smth Plt, 1/8" Tile, Mill, Angle Frame, Bolt-In, SST Spring Asst, 316 SST HDW, Slam Latch w/Hdl	
	NAME	DATE	SIZE	DWG. NO.	REV
DRAWN	BES		A	Babcock FD BFDFLA_X_SWL-BI-T1 ShpDr	
RELEASED	BES		WEIGHT:	SHEET 1 OF 2	

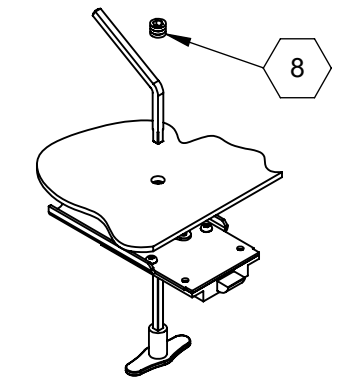


6 LAYERS GYPSUM
REQ'D TO MAINTAIN
FIRE RATING

3 LAYERS
GYPSUM



BOLT-IN DETAIL



SLAM LATCH DETAIL



9300 73rd Avenue North
Brooklyn Park, MN 55428

TITLE: FD, 2hr Fire Rated, 150 psf,
, Sngl Dr, Alum, 1/4" Smth Plt, 1/8" Tile,
Mill, Angle Frame, Bolt-In,
SST Spring Asst, 316 SST HDW, Slam Latch w/Hdl

	NAME	DATE	SIZE	DWG. NO.	REV
DRAWN	BES		A	Babcock FD BFDLA_X_SWL-BI-T1 ShpDr	
RELEASED	BES		WEIGHT:		SHEET 2 OF 2