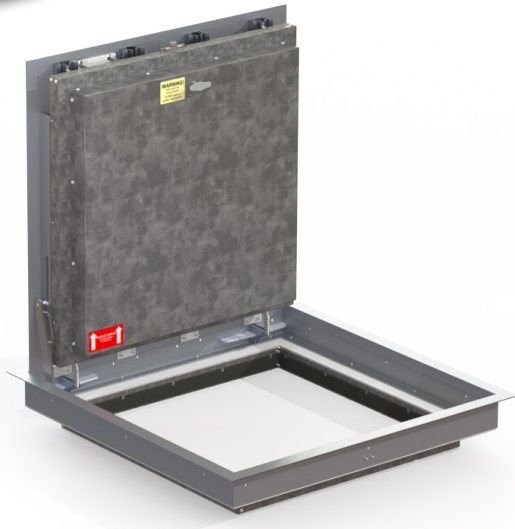


EXPANDED SIZES



Fire-Rated

DIAMOND TREAD FLOOR DOOR

Babcock Davis Diamond Tread Floor Door is redesigned to offer larger sizes and is tested to NFPA 288 standards to offer 2 and 3-hour fire ratings. This floor door is reinforced for pedestrian traffic loads and features an aluminum diamond tread cover plate.

FEATURES

SIZES Industry-leading sizes up to 52"x96"

FIRE-RATED Tested to NFPA 288, this floor door is Warnock-Hersey labeled with 2- or 3-hour fire-rating with a maximum temperature rise of 250°F.

DETAILS

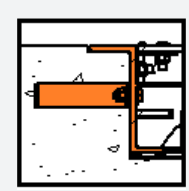
- LOAD** 250 PSF up to 48"x60"; 150 PSF above 48"x60"
- COVER** Diamond Tread Plate, Aluminum: 1/4" mill finish
- FRAME** Aluminum, Angle Frame, Thermally Broken
- INSTALLATION** Cast-In Standard, Bolt-In optional
- SPRING** Enclosed coil, Type 17-7 Stainless Steel
- HINGES** Heavy Duty Type 316 Stainless Steel
- HOA** Type 316 Stainless Steel, Optional self-closing
- LATCH** Slam latch Zinc-Plated Steel with inside lever handle
- OPTIONS** Self Closing Mechanism, Recessed Padlock Hasp, Mortise Lock
- TEST** NFPA 288, Warnock Hersey tested and listed by Intertek

MATERIALS



Aluminum

FRAME



Angle Frame
Cast-In



Angle Frame
Bolt-In

Fire Rated Diamond Tread Floor Door Order Guide

FD is standard with 2-hour rating unless 3-hour rating is chosen under "Options"

MODEL	LOAD	MATERIAL	WIDTH	X	LENGTH	COVER & INSTALL	OPTIONS
				X			
BFDF	P - 250 PSF	A - ALUMINUM	24"-48" ¹		24"-60"	SWL -	3HR - 3 HOUR RATING ³
BFDF	L - 150 PSF		>48"-52" ²		>60"-96"	S - SINGLE DOOR W - ANCHORS PROVIDED L - HANDLE	BI - BOLT-IN INSTALLATION ⁴ MC6 - MORTISE LOCK PR - RECESSED PADLOCK HASP SC - SELF CLOSING MECHANISM

¹ The load will default to "L" (150 PSF) for doors greater than 48" x 60" (e.g. FDFLA50x75SWL)
² The load will default to "P" (250 PSF) for doors up to and including 48"x60" (e.g. FDFPA36x36SWL)
³ up to 48x60 only and 250 PSF only
⁴ 2-hour only

Additional sizes available, call for more information.

Download Drawings, CAD, Spec, and LEED documents at www.BabcockDavis.com