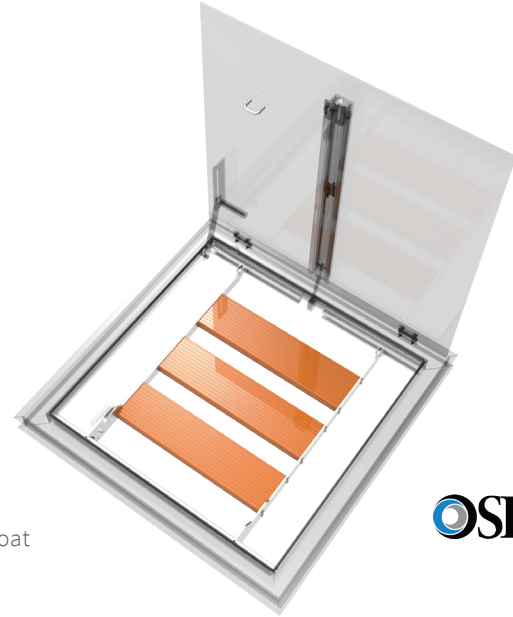


Safety Grating

FALL PROTECTION

Nystrom OSHA compliant Safety Grating provides permanent fall protection. Designed with a 6 inch side access and featuring positive locking in both open and closed positions. The grate includes a padlock hasp and two nut rails. It is available as a factory installed option with most floor door styles, or as a retrofit designed to fit ANY manufacturer.



DETAILS

LOAD 300psf live load

MATERIAL Aluminum: extruded, 6 inch by 1/4 inch serrated plate, powder coat

HOLD OPEN LATCH Stainless steel with padlock hasp

COMPLIANCE OSHA 29 CFR1926.502(c)

Plastic fiber reinforced option available, call for more information.

ORDER GUIDE - Factory Installed

MODEL (FLOOR DOOR)	OPTION
BFD_____	- SGT

ORDER GUIDE - Retrofit

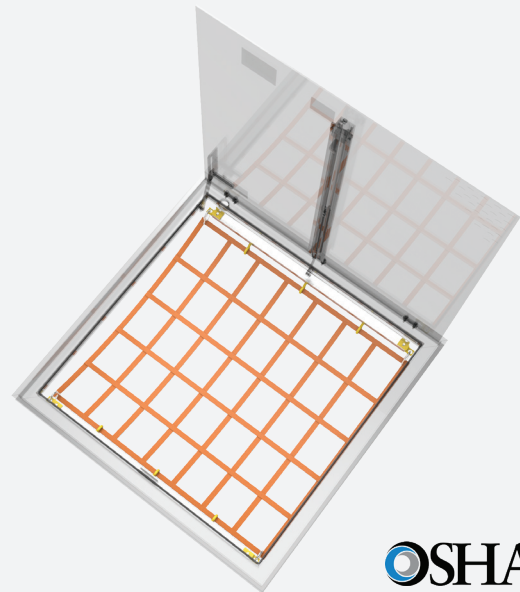
MODEL	WIDTH	X	LENGTH	INSTALL
BSGT	Standard Sizes (W x L)		-	R Retrofit
	24" x 24"		42" x 42"	
	30" x 30"		48" x 48"	
	30" x 36"		48" x 72"	
	36" x 36"			

Additional sizes available, call for more information.

Safety Nets

FALL PROTECTION

Babcock-Davis Safety Net is designed to be installed in floor door openings to reduce risks associated with falls. The safety net easily slides on guide rails to facilitate entry and then repositioned to prevent fall through.



DETAILS

LOAD 5000 lb breaking strength

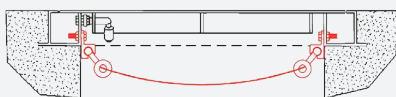
MATERIAL

- Rail: Aluminum 6061 T6
- Netting: Nylon webbing
- Rings: Aluminum alloy

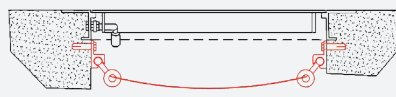
INSTALLATION

- Drainable Frame: 1/2 inch nuts and bolts
- Retrofit or Non-Drainable Frame: 1/2 inch wedge-style concrete anchors

COMPLIANCE OSHA 29 CFR1926.502(c)



*Drainable Frame Only
Installed in Gutter Channel*



*Retrofit or Non-Drainable Frame
Installed below frame, in wall of floor opening*

ORDER GUIDE

MODEL	MATERIAL	WIDTH	X	LENGTH	INSTALL
BSN		Standard Sizes (W x L)		-	
	A Aluminum	36"	x	30"	R Retrofit
	S Stainless Steel	48"	x	48"	
		48"	x	60"	