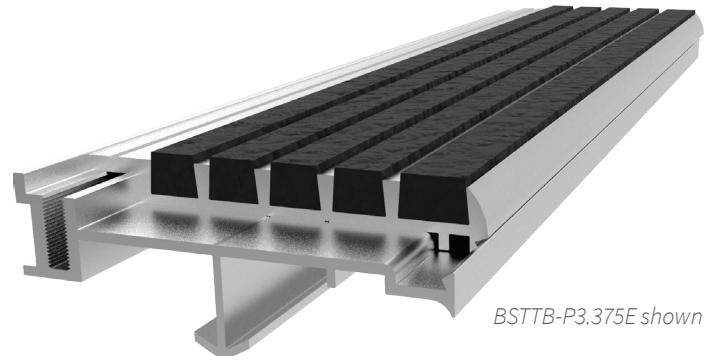


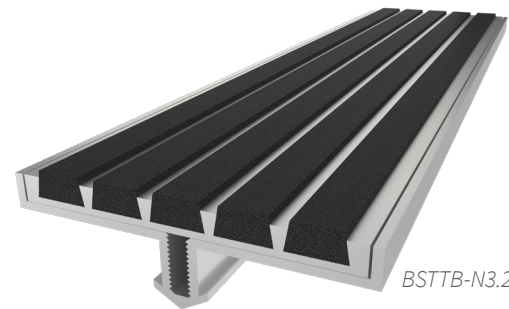
Two-Part

STAIR TREADS + NOSINGS

Two-Part Stair Treads and Nosings are designed to save your stair nosings from damage during the construction process. The sub-Material and plywood inserts are installed during the construction phase. When the building is near completion, the temporary plywood tread is replaced with the abrasive or EcoTread™ anti-slip safety tread top.



BSTTB-P3.375E shown



BSTTB-N3.25E shown

FEATURES

EASY TREAD REPLACEMENT Easily replace worn or damaged treads by unscrewing the existing tread, slide the new one in and fasten to the base.

CONTINUOUS COLOR No need to worry about walking off the color as the abrasive material filler is dyed throughout.

DETAILS

MATERIAL Extruded Aluminum

APPLICATION Poured Concrete, or Steel Pan

TREAD BSTTB: Ribbed Abrasive
 BSTTF: Full Abrasive
 BSTTB-N: Ribbed Abrasive or EcoTread

WIDTH 3-³/₈ Inches or 3-¹/₄ Inches

LENGTH Up to 12 linear feet

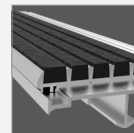
MOUNTING Anchor

NOSING Short-Tipped, None

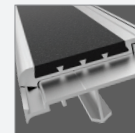
OPTIONS Photoluminescent, Vision Line, Mitered Cuts, Painted Undersides or Taped Tops

CODE COMPLIANCE 2010 ADA 504, 2015 IBC/ICC Section 1029.13.2, 2018 IBC/ICC Section 1029.14.2, and 2016 California Building Code Section 11B-504.4.1 (BSTTF-3.375E only) and

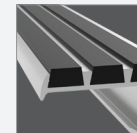
TREAD



Ribbed Bar Abrasive



Full Abrasive

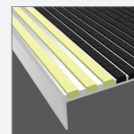


Short-Tipped (P)

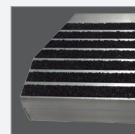


No Nose Inset (N)

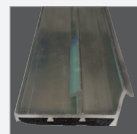
OPTIONS



Vision Line



Mitered Cuts



Painted Undersides



Taped Tops

ORDER GUIDE

MODEL	WIDTH	NOSING	TREAD	INSTALL
BSTTB-P3.375E	3- ³ / ₈ "	Short-Tipped	Ribbed Abrasive	Extruded Anchor
BSTTF-P3.375E	3- ³ / ₈ "	Short-Tipped	Full Abrasive	Extruded Anchor
BSTTB-N3.25E	3- ¹ / ₄ "	None	Ribbed Abrasive	Extruded Anchor
BSTTB-N3.25E-ECO	3- ¹ / ₄ "	None	Ribbed EcoTread™	Extruded Anchor