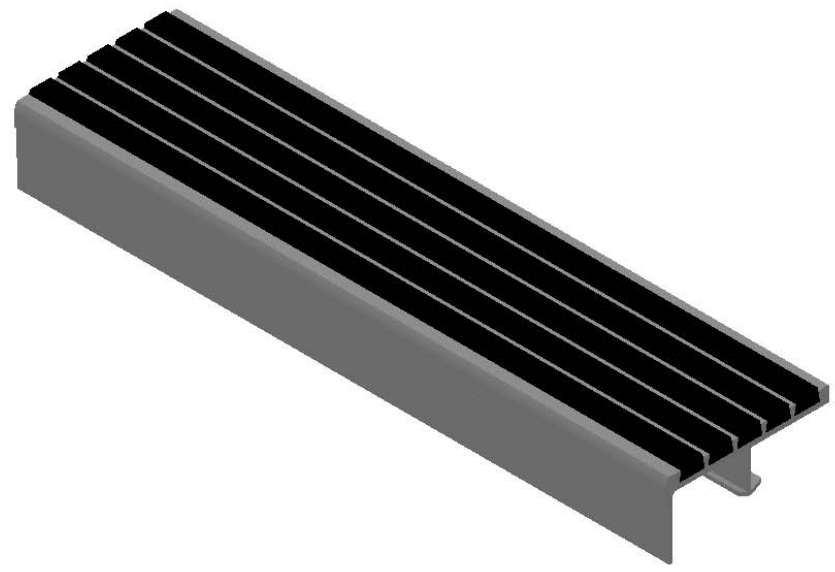


**MODEL L3E**

(SINGLE STAGE RIBBED RECYCLED RUBBER)



**SPECIFICATIONS:**

- ① **BASE:** EXTRUDED ALUMINUM ALLOY 6063 T-6
- ② **ECOTREAD:** RECYCLED RUBBER SHEET  
8MM RECYCLED RUBBER GRANULES  
ENCAPSULATED IN A WEAR AND WATER  
RESISTANT ELASTOMERIC NETWORK. 2 PART  
EPOXY, LOCKED INTO EXTRUDED CHANNELS

PROPRIETARY AND CONFIDENTIAL: THE INFORMATION CONTAINED IN THIS DRAWING IS THE SOLE PROPERTY OF BABCOCK-DAVIS. ANY REPRODUCTION IN PART OR AS A WHOLE WITHOUT THE WRITTEN PERMISSION OF BABCOCK-DAVIS IS PROHIBITED.

PROJECT:					
ARCHITECT:					
CONTRACTOR:					
QTY:					
PART#:					
 9300 73rd Avenue North Brooklyn Park, MN 55428		TITLE: Stair Tread, Single Stage, 5 1/8" x 1/4" Ribs, Long Tip Nose, Alum Extruded Anchor			
		NAME	DATE	SIZE	DWG. NO.
DRAWN	DKL	3/6/19	A	Babcock BSTSB-L3E	A
RELEASED	TR	3/6/19	WEIGHT:	SHEET 1 OF 1	