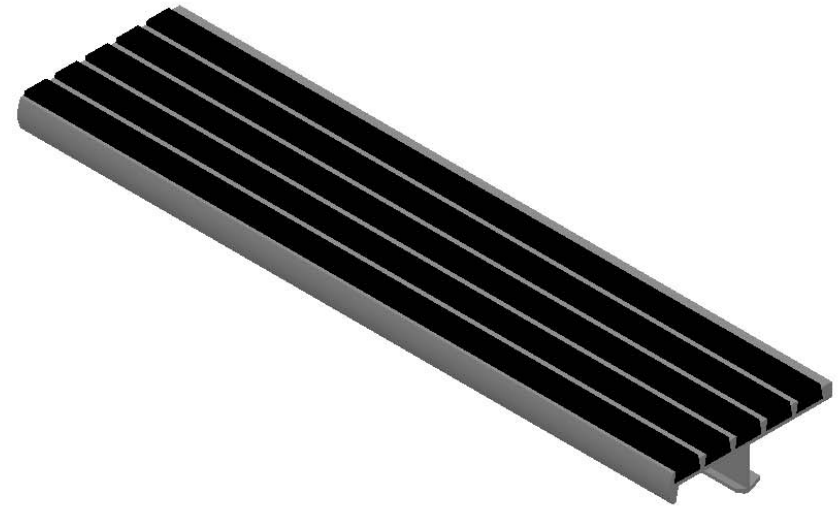



MODEL C3E

(SINGLE STAGE RIBBED RECYCLED RUBBER)



SPECIFICATIONS:

- ① **BASE:** EXTRUDED ALUMINUM ALLOY 6063 T-6
- ② **ECOTREAD:** RECYCLED RUBBER SHEET
8MM RECYCLED RUBBER GRANULES
ENCAPSULATED IN A WEAR AND WATER
RESISTANT ELASTOMERIC NETWORK. 2 PART
EPOXY, LOCKED INTO EXTRUDED CHANNELS

PROJECT:			
ARCHITECT:			
CONTRACTOR:			
QTY:			
PART#:			
 9300 73rd Avenue North Brooklyn Park, MN 55428		TITLE: Stair Tread, Single Stage, 5 1/8" x 1/4" Ribs, Short Tip Nose, Alum Extruded Anchor	
		DWG. NO. Babcock BSTSB-C3E	
NAME	DATE	SIZE	REV
DRAWN	DKL	3/6/19	A
RELEASED	TR	3/6/19	
WEIGHT:			SHEET 1 OF 1

PROPRIETARY AND CONFIDENTIAL: THE INFORMATION CONTAINED IN THIS DRAWING IS THE SOLE PROPERTY OF BABCOCK-DAVIS. ANY REPRODUCTION IN PART OR AS A WHOLE WITHOUT THE WRITTEN PERMISSION OF BABCOCK-DAVIS IS PROHIBITED.