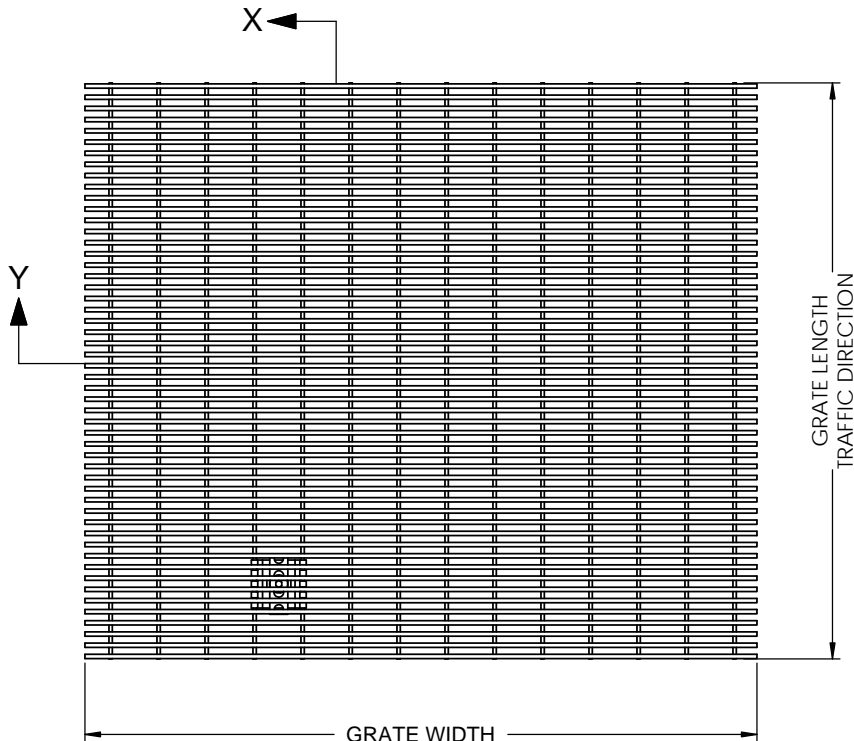
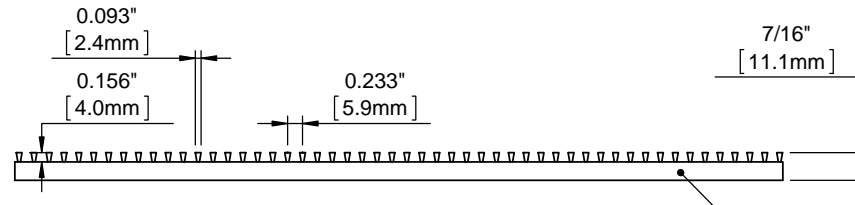


B

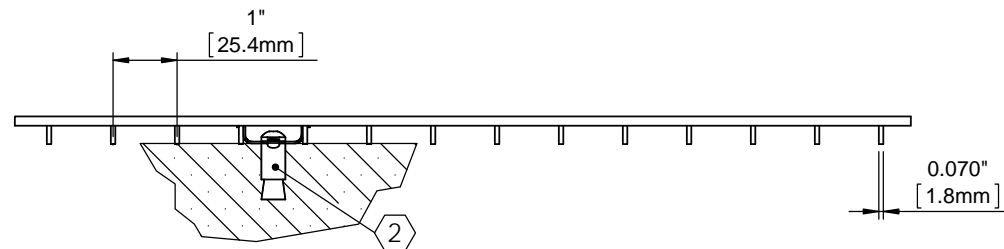
B



TYPICAL PLAN VIEW



**SECTION X
GRATE WIDTH**



**SECTION Y
GRATE LENGTH**

A

A


Notes:

- ① Grates are made of type 304 stainless steel and are 7/16" (11.1mm) deep. Wire is .093 x .156 (2.4mm x 4.0mm), spaced .233 (5.9mm) O.C. with welded .070 (1.8mm) thick support rods spaced 1" (25.4mm) O.C.
- ② Field installed hidden lockdown assembly with concrete anchor.
- 3. Grate surface wires must run perpendicular to traffic direction.

4. Frame options:

- SS-38SF, stainless steel angle frame, level bed, cast in place.
- SS-38SFD, stainless steel angle frame, level bed, mechanically fastened.
- F-12, aluminum surface mount frame, level bed, mechanically fastened.
- F-13, aluminum recessed frame, level bed, cast in place.

5. Additional information can be found in the product specification and is considered part of this transmittal.

PROJECT:					
ARCHITECT:					
CONTRACTOR:					
 9300 73rd Avenue North Brooklyn Park, MN 55428		DESCRIPTION:			
		SS-38G Elegril			
NAME	DATE	SIZE	MODEL NO.	REV	
DRAWN DKL	8/14/13	A	SS-38G	A	
RELEASED	PGE	8/23/13	SCALE: NTS	SHEET 1 OF 1	