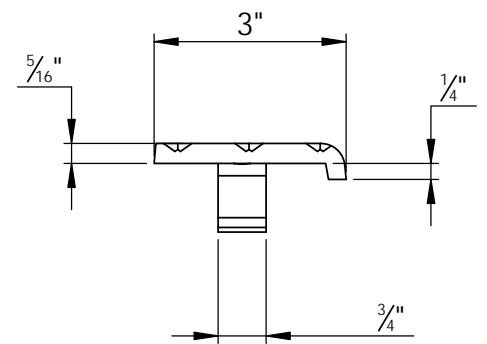
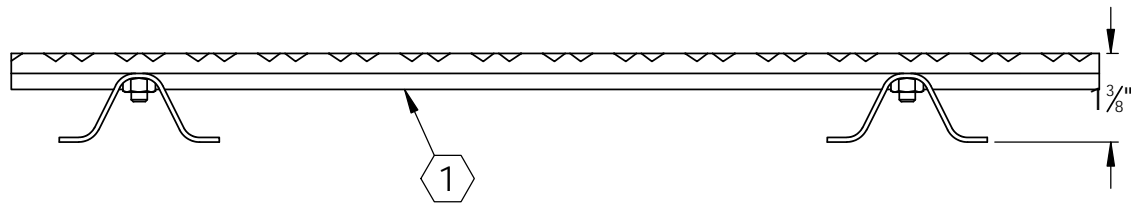
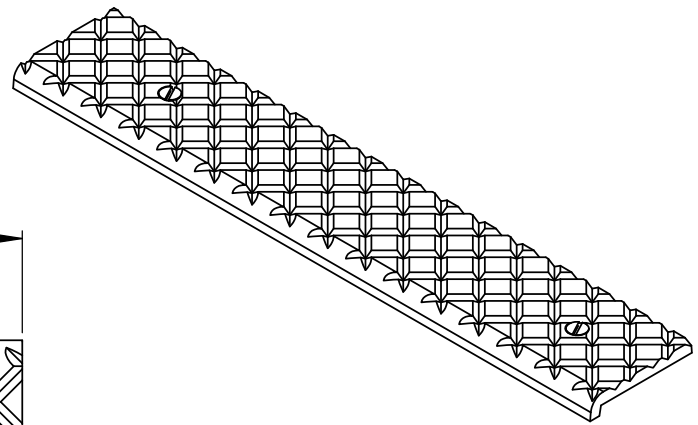
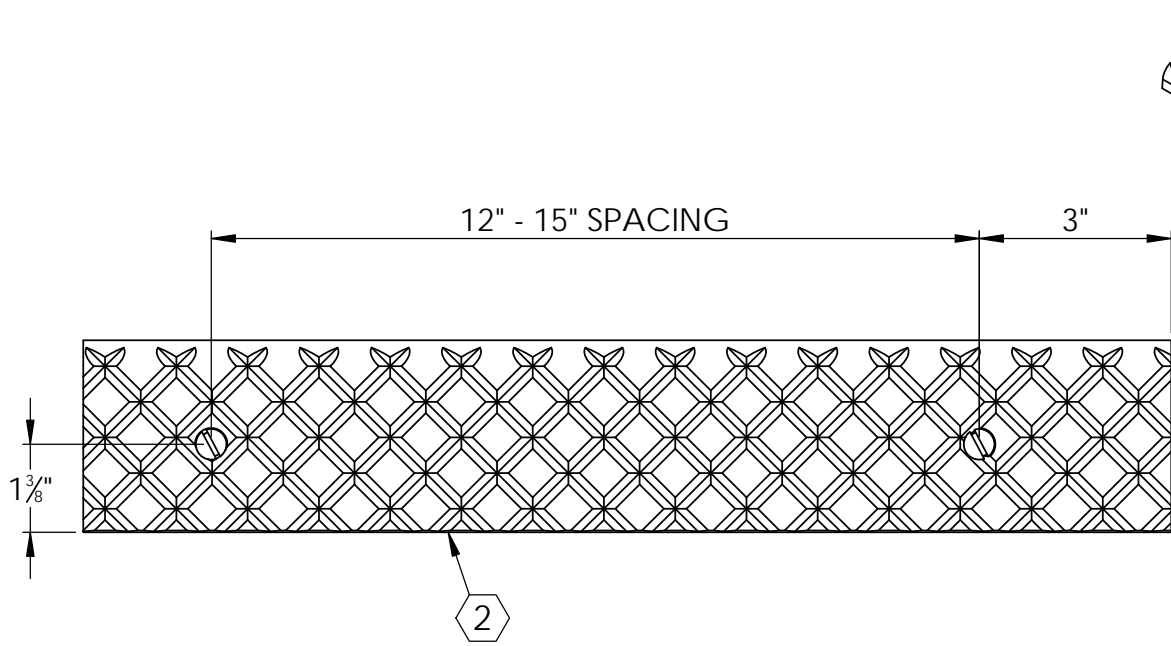


B

B




A

A

SPECIFICATIONS:

- ① BASE: 319 CAST ALUMINUM
- ② ABRASIVE: SILICON CARBIDE ABRASIVE , CROSSHATCH PATTERN 1/8" DEEP
- 3. FINISH: SAND CAST
- 4. PAN STAIRS WITH CONCRETE: NOSING SHALL TERMINATE NO MORE THAN 1/16" FROM SIDE OF STEPS
- 5. LENGTH: 6" MINIMUM 6'-0" MAXIMUM
- 6. WING ANCHORS: SHIPPED LOOSE, STEEL ANCHORS AND STAINLESS STEEL HARDWARE

LENGTH ±1/8	QTY

PROJECT:					
ARCHITECT:					
CONTRACTOR:					
QTY:					
PART#:		BSTCA-P3W			
 9300 73rd Avenue North Brooklyn Park, MN 55428		TITLE:			
		STAIR TREAD, CAST SERIES 3", CAST ALUMINUM CROSSHATCH SHORT NOSING FOR PAN, WING ANCHOR			
	NAME	DATE	SIZE	DWG. NO.	REV
DRAWN	DKL	10/13/23	A	BSTCA-P3W	C
RELEASED	GLN	10/13/23	WEIGHT: 1.20 LB/FT		SHEET 1 OF 1

PROPRIETARY AND CONFIDENTIAL: THE INFORMATION CONTAINED IN THIS DRAWING IS THE SOLE PROPERTY OF BABCOCK-DAVIS. ANY REPRODUCTION IN PART OR AS A WHOLE WITHOUT THE WRITTEN PERMISSION OF BABCOCK-DAVIS IS PROHIBITED.