

**G97 HC B '616**

F 7 C J 9 F 51; 95 @ A B I A 7 C J 9 F G H: 9 B 98 H C  
 K H G H B B 5 @ 9 @ 58 C: 7 D G K H 5 A 5 L  
 8 9 @ 7 H C B C: % % % \$ C: H 9 G D 5 B "

G @ B 9 F . % : 51; 95 @ A B I A

H 71 F 6 5 B 8 7 C I B H F: @ G: K # 9 N H 5 6.  
 %: 51; 95 @ A B I A

I - B - G: 7 C J 9 F 1 A ]  
 71 F 6 1 A ]

J < 5 F 8 K 5 F 9 N B 7 D @ 5 H 8 G H 9 @

K < C @ 8 C D 9 B 5 F A . @ 7 ? 7 C J 9 F - B : I @ M C D 9 B  
 D C G H C B I N B 7 D @ 5 H 8 G H 9 @

L @ 5 H 7 < : G B : 9 D C - B H N B 7 D @ 5 H 8 F C H 5 F M @ 5 H 7 <  
 5 G 9 A 6 @ M 8 9 G : B 9 8 H C < C @ 7 C J 9 F 7 @ G 9 8 5 : 5 - B C H  
 Z # % \$ % D G K B 8 I D @ H N B 7 D @ 5 H 8 G H 9 @ 5 H 7 <  
 G H 7 9 F C B 7 1 F 6 "

M < B : 9 G N B 7 D @ 5 H 8 G H 9 @ H 5 A D 9 F D F C C : K H  
 G H 9 @ < B : 9 D B G 7 C B H 5 B 9 8 K H B < 5 H 7 < 5 G D 5 F H C :  
 C D F - B : 5 G 9 A 6 @ M

N B G @ 5 H C B . % " P O L Y I S O ( R 7 . 2 ) 7 1 F 6 2 % " D C @ G H F 9 B 9 7 C J 9 F

O ; 5 G 7 9 H 5 8 < 9 G J 9 6 5 7 9 8 9 D 8 A F I 6 6 9 F 9 L H F I G C B

P A 5 B I 5 @ C D 9 B - B ; . 7 C J 9 F C D 9 B G K H : B H F B 5 @ 5 B 8 "

Q 9 L H F B 5 @ A 5 B I 5 @ F C H 5 F M @ 5 H 7 < < 5 B 8 @ K H : B H F B 5 @  
 5 B 8 9 L H F B 5 @ D 5 8 @ 7 ? G 9 7 1 F # M D F C J G @ B "

R C D F - B : 5 G 9 A 6 @ M : F 9 5 G 9 8 < 9 5 J M 8 1 H M G H 9 @ 7 C A D F 9 G G C B

S C C : < 5 H 7 < G A 9 : " " F K B H K E I " " F @ B : H K E

T C I : < C D 9 B - B ; " " F K B H K E I " " F @ B : H K E

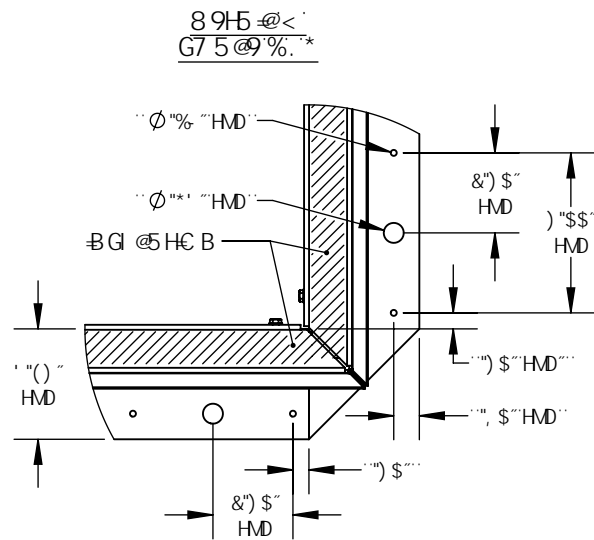
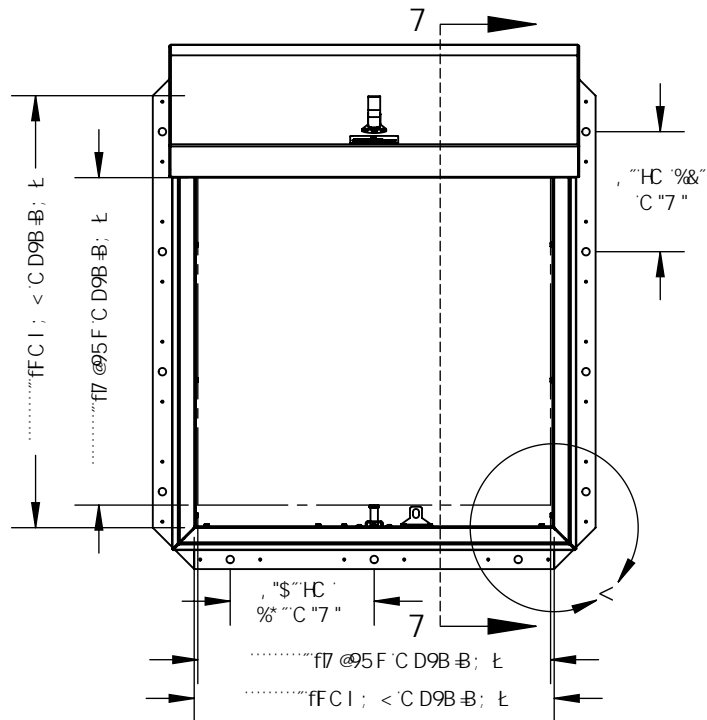
**H97 HC B '75HCBG'**

H 5 G 8 % A D 5 7 H H 9 G H  
 H 5 G 8 & 1 B @ C F A G H 5 H 7 5 F D F 9 G G F 9 - % \$ % D G  
 H 5 G 8 : 7 M @ K B 8 D F 9 G G F 9 @ 5 8

H 9 8 9 G @ B 7 C B H 5 B 9 8 < 9 F 9 B G 8 9 G @ B 9 8 5 B 8 H 9 8 B  
 5 7 7 C F 8 5 B 7 9 K H : H 9 : @ C F 8 5 6 1 @ B : 7 C 8 9 "

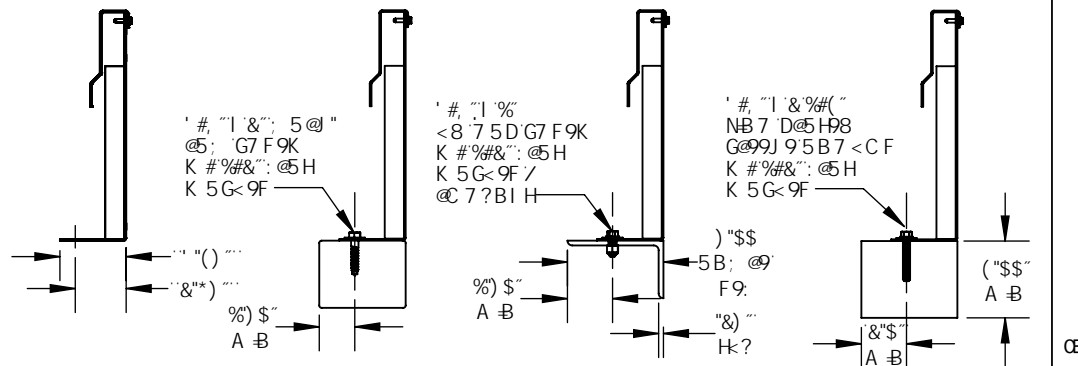
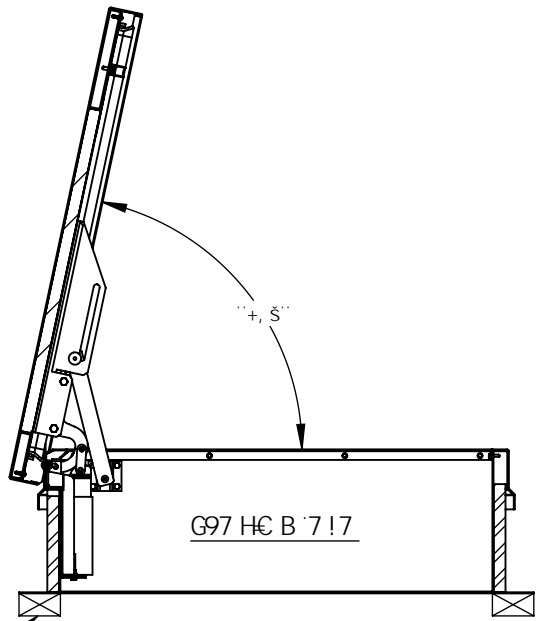
D F C D F 9 B F M 5 B 8 7 C B : 8 9 8 H 5 @ H 9 B : C F A 5 H C B 7 C B H 5 B 9 8 B H : 6 8 F 5 K B : 6 H 9 G @ @ D F C D 9 F H M C : 6 5 6 7 C 7 2 1 8 5 J 6 5 B M F 9 D F C 8 1 7 H C B B D 5 F H C F 5 G 5 K < C @ K H C I H H 9  
 K F H 9 8 D 9 F A G G C B C : 6 5 6 7 C 7 2 1 8 5 J 6 5 G D F C < 6 4 9 8 "

|   |       |  |       |
|---|-------|--|-------|
| : @ C F 8 5 D F C 8 1 7 H 5 D D F C J 5 @ B C .       |       | A = 5 A = 8 5 8 9 7 C I B H M E : @<br>B C 5 . % @ 1 \$ ' & \$ % -<br>9 L D F 5 H C B 8 5 H 9 . + # / # 4          |       |
| MIAMI-DADE COUNTY<br>APPROVED                         |       |  |       |
| D F C > 9 7 H .                                       |       |  |       |
| 5 F 7 < 4 9 7 H .                                     |       |  |       |
| 7 C B H F 5 7 H C F .                                 |       |  |       |
| E H M   |       |  |       |
| D 5 F H .   |       |  |       |
| <br>9300 73rd Avenue North<br>Brooklyn Park, MN 55428 |       | V Q Š Ö K<br>Ü [ [ P a r a & P : I I B a ^ P a r a & U i a . É<br>È ) :   Ô È<br>Ö F { È r a i È ) *   Á e i   a È |       |
| Ü Ö Ö P   | Ü Ö Ü | F B I F G  | Ü Ö Ü |
| Ü Ö Ö P   | Ü Ö Ü | F B I F G  | Ü Ö Ü |



5B7 < CF-B; C DHC BG

I G9 H: 9: 5 G9B 9F A 5BI : 57 H F9GF97 C A A 9B8 98 G5: 9HM: 57 HC FG : 8 : 9F9BH7 CB8 #C B G  
 9L G77 C BH57 HA 5BI : 57 H F9CF 5 : @CF85 DFC : 9GC B5 @7 9B G98 9B; B99F : CF 7 C B G @5HC B"



A C I BHB; 6MC H 9FG  
 : C @ C K 5B7 < CF-B; C DHC BG

DFC DF 9BFM5B8 7CB: 898H5 @ H 9 B: CFA 5HC B 7 C BH5 B98 B H: 68F5K B: 6H: 9GC @ DFC D9F HMC: 6567 C 7 185J G 5BMF9DFC B1 7 HC B B D5FHCF 5G5 K < C @ K # C I H H 9  
 K F # 98 D9FA GGC B C: 6567 C 7 185J G 6 DFC < 6498"

|   |     |  |       |
|---|-----|--|-------|
|   |     | VQŠÖK<br>Ú[ [ P a a & @ P H a a ^ P a a & @ V i a • È<br>È ] * j A : È<br>OÈ { È T a j A } * j A e j A : È |       |
| 9300 73rd Avenue North<br>Brooklyn Park, MN 55428 |     | ÚQZ Ó Y Ó È A U È  |       |
| ÚÜÜ P   | ÚÜÜ | FFI FFG  | CE    |
| ÚÜÜ P   |     | Y ÜÜ P V I A   |       |
| ÚÜÜ P   |     |  | ÚÜÜ P |