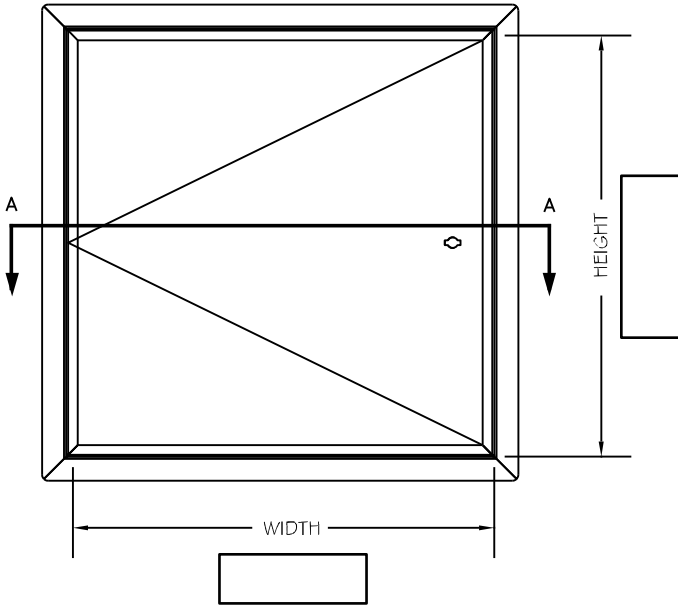


# B-IU SERIES

UPWARD SWINGING INSULATED FIRE RATED ACCESS PANEL FOR HORIZONTAL APPLICATIONS ONLY



## LISTINGS

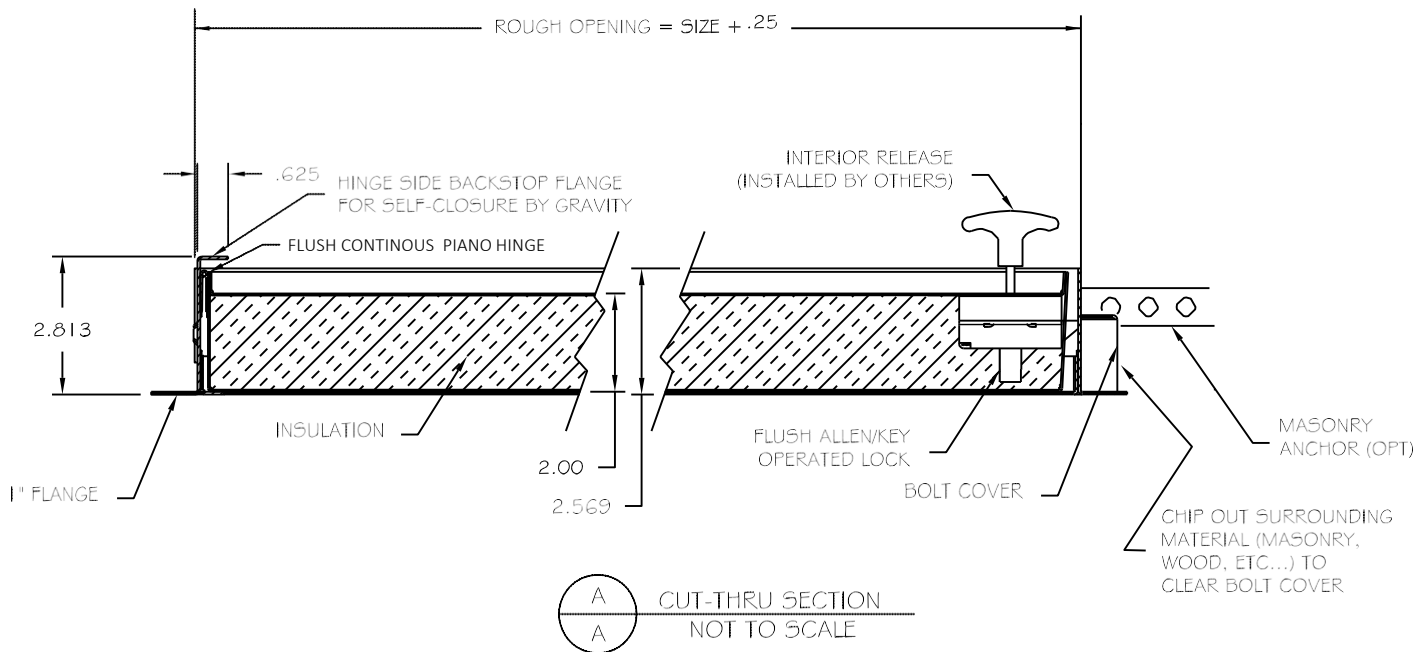


## SPECIFICATIONS

- 16 GAUGE (1.520mm) COLD ROLLED STEEL FRAME
- 20 GAUGE (.912mm) COLD ROLLED STEEL DOOR
- 2" THICK FIRE RATED INSULATION, 8 R VALUE
- 1" WIDE EXPOSED FLANGE
- WHITE BAKED ON POWDER COAT FINISH
- CONCEALED CONTINUOUS PIANO HINGE
- FRAMES PROVIDED WITH .25" (6.25mm) MOUNTING HOLES
- FLUSH ALLEN/KEY OPERATED LOCK
- INTERIOR RELEASE MECHANISM, FURNISHED BY FACTORY, INSTALLED BY OTHERS
- BACKSTOP FLANGE FOR SELF-CLOSURE BY GRAVITY

## OPTIONS

- GALVANIZED BONDERIZED STEEL
- STAINLESS STEEL WITH #4 SATIN POLISH FINISH
- STAINLESS STEEL CONTINUOUS PIANO HINGE WITH STAINLESS STEEL PIN (AVAILABLE ON STAINLESS STEEL PANELS ONLY)
- PREPARATION FOR 1.125" MORTISE CYLINDER (CYLINDER PROVIDED BY OTHERS OR BY FACTORY)



9300 73RD AVENUE NORTH  
BROOKLYN PARK, MN 55428

PH. (888) 412-3726  
WWW.BABCOCKDAVIS.COM

PROJECT:

CONTRACTOR:

ARCHITECT:

INITIALS:  QTY:  DATE:  PART #:

# B-IU SERIES

## Standard Features:

- Door: 20 gauge (.912mm thick) cold rolled steel
- Frame: 16 gauge (1.52mm thick) cold rolled steel with 1" Flange
- Hinge: Concealed continuous piano hinge
- Latch: Allen/Key operated latch bolt  
 Optional: Mortise cylinder preparation (cylinder provided by factory or by others)  
 \*One additional Allen/Key operated latch bolt standard on all panels greater than 32" in height.
- Finish: White baked on powder coat  
 Optional: galvanized bonderized or stainless steel with #4 satin polish finish
- Insulation: 2" thickness fire rated mineral fiber, 8 R value
- Other: Interior release mechanism, furnished by factory installed by others.  
 Self-closing by gravity

## Specifications:

Frame Shell be 16 gauge cold rolled steel with 1" flange. Door shall be fabricated from 20 gauge cold rolled steel, insulated sandwich type construction. Door shall be self latching with self closure bitgravity and interior latch release mechanism to be furnished by factory and installed by others. Hinge shall be concealed continuous piano hinge latch is Shelby Allen/key operated latch bolt (optional: preparation to receive 1 1/8" mortise cylinder – cylinder provided by factory or others). One additional Allen/key operated latchbolt standard on all panels greater than 32 inches in height this assembly shall carry a one hour Warnock hersey label. Finish Shelby white baked on powder coat (optional galvanized bond arised steel or stainless steel with #4 satin Polish finish).

Installation shall be in accordance with manufacturer's instructions. Manufacturer shall guarantee against defects in material and workmanship for a period of one year.

## Standard Sizes:

Std Sizes (in)	Std Sizes (mm)	Weight/Latches	Std Sizes (in)	Std Sizes (mm)	Weight/Latches
12x12	305x305	17/1	22x30	559x762	32/1
14x14	356x356	16/1	22x36	559x914	39/2
16x16	406x406	18/1	24x24	610x610	29/1
18x18	457x457	20/1	24x30	610x762	36/1
22x22	559x559	27/1	24x36	610x914	40/2

All units are hinged on the second dimension (height). Rough opening is door size plus 1/4".