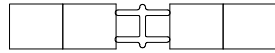
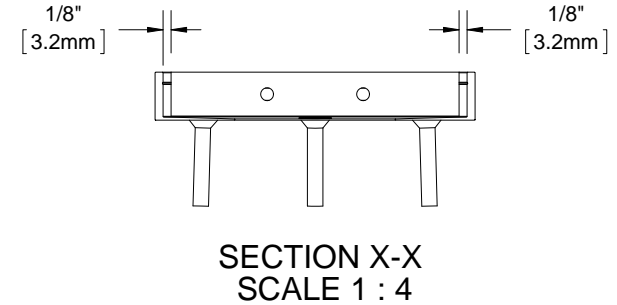
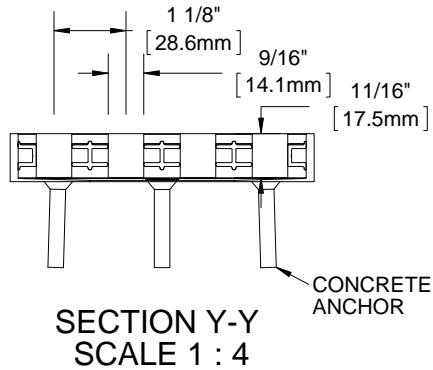
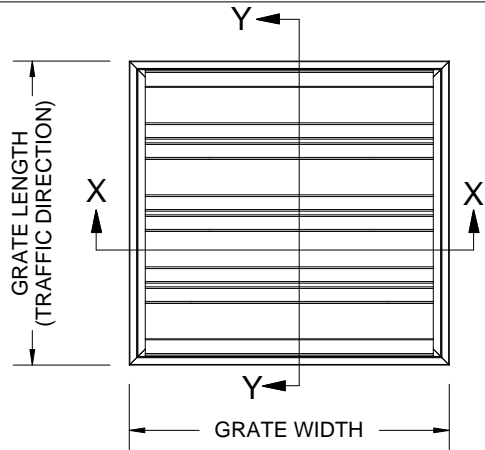


BGV34C

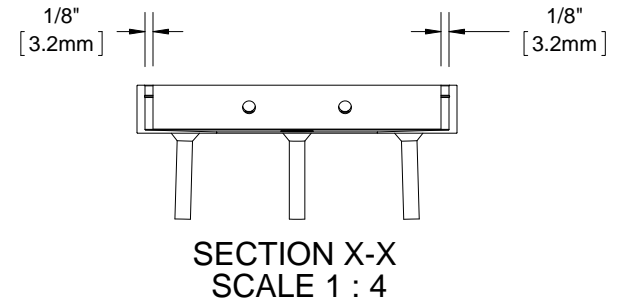
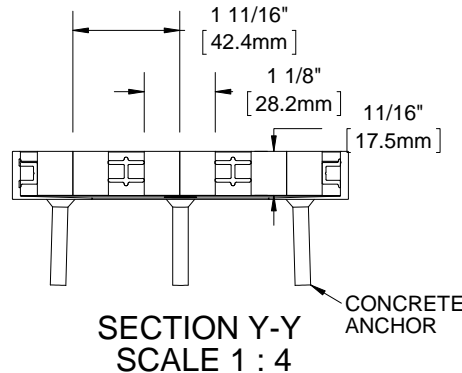
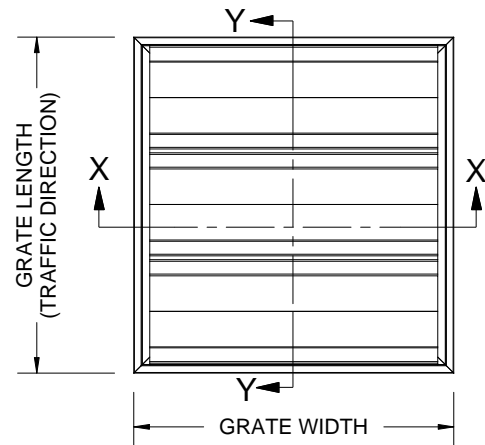


BGV34CC

QTY	MODEL	WIDTH	LENGTH	FINISH	LOCATION



SINGLE TREAD



DOUBLE TREAD

NOTES:

- STANDARD MAXIMUM SECTION SIZE OF GRATE WIDTH NOT TO EXCEED 10'-0"
- FRAME ANCHOR SPACING: 6" FROM CORNERS, 24" MAX
- VERIFY TRAFFIC DIRECTION
- ALL RAIL COMPONENTS ARE MADE OF 6063-T6 ALUMINUM ALLOY, ALL FRAME COMPONENTS ARE MADE OF 6063-T5 ALUMINUM ALLOY
- TREAD RAILS MUST RUN PERPENDICULAR TO TRAFFIC DIRECTION
- GRATE DIMENSION ALLOWS FOR CLEARANCE BETWEEN GRATE SECTIONS AND FRAMES IN THE WIDTH DIMENSION
- ADDITIONAL INFORMATION CAN BE FOUND IN THE PRODUCT SPECIFICATION AND IS CONSIDERED PART OF THIS TRANSMITTAL.
- FRAME MODEL NUMBER: BGV34LBM

PROPRIETARY AND CONFIDENTIAL: THE INFORMATION CONTAINED IN THIS DRAWING IS THE SOLE PROPERTY OF BABCOCK-DAVIS. ANY REPRODUCTION IN PART OR AS A WHOLE WITHOUT THE WRITTEN PERMISSION OF BABCOCK-DAVIS IS PROHIBITED.

PROJECT:					
ARCHITECT:					
CONTRACTOR:					
<p>9300 73rd Avenue North Brooklyn Park, MN 55428</p>			DESCRIPTION:		
			envIRONtread II®, 11/16", Reversible Recycled Rubber Grate with Mechanically Fastened, Tapered Angle, Aluminum Frame		
	NAME	DATE	SIZE	DWG. NO.	
DRAWN	DKL	4/17/15	A	BGV34C-FLBM	
RELEASED	PE	4/17/15	SCALE: NTS	SHEET 1 OF 1	REV B