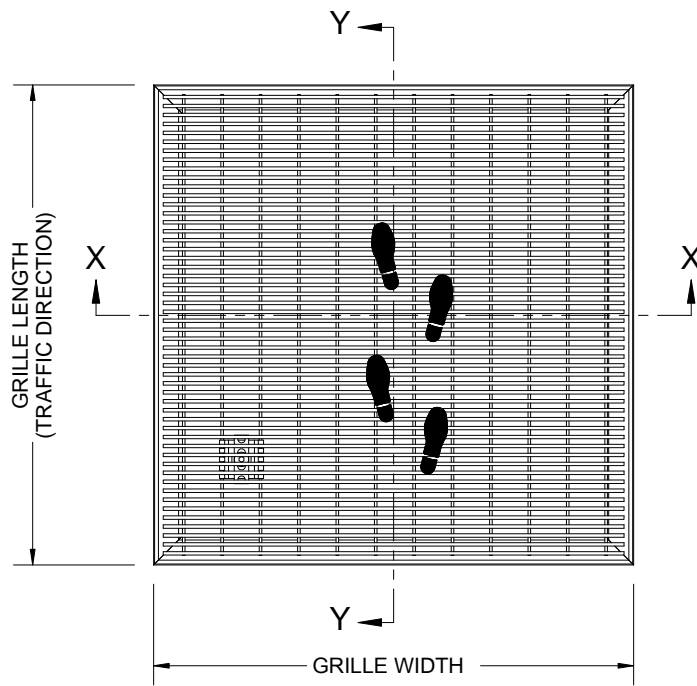


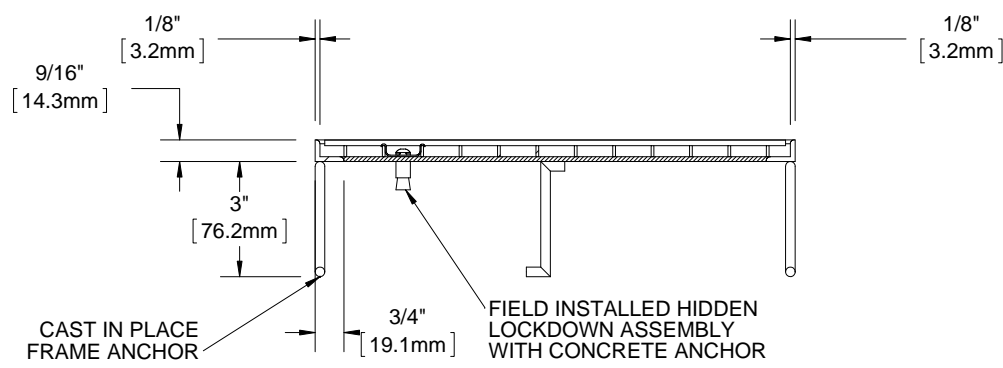
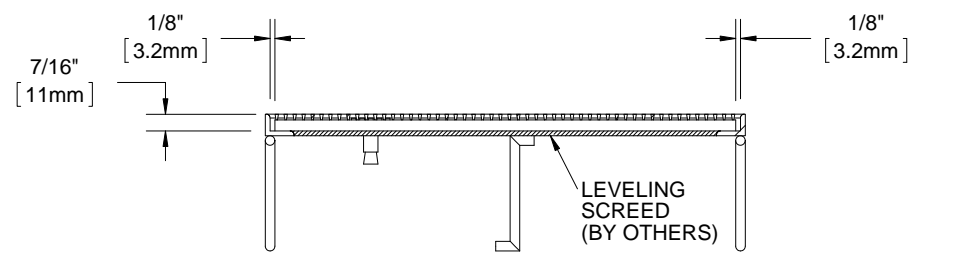
BGE38S

QTY	MODEL	WIDTH	LENGTH	FINISH	LOCATION

B



B



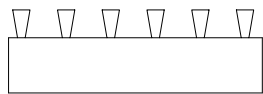
A

A

- NOTES:**
- FRAME ANCHOR SPACING: 6" FROM CORNERS, 24" MAX
  - ALL STAINLESS STEEL FRAME CORNERS ARE WELDED
  - ALL RAIL COMPONENTS ARE MADE OF TYPE 304 STAINLESS STEEL, ALL FRAME COMPONENTS ARE MADE OF TYPE 304 STAINLESS STEEL
  - FOR MAXIMUM STRENGTH, EACH JOINT BETWEEN SURFACE WIRES AND SUPPORT RODS SHALL BE RESISTANCE WELDED. BECAUSE OF THE MANUFACTURING PROCESS USED TO DO THIS, THE SURFACE WIRES AND SUPPORT RODS ARE NOT PERPENDICULAR, AND THE WIRES AND RODS OF ADJACENT SECTIONS WILL NOT BE ALIGNED.
  - GRILLE IS MADE WITH .093" X .156" (2.4mm X 4.0mm) STAINLESS STEEL WIRE SPACED .233 (5.9mm) O.C. AND WELDED SUPPORT RODS SPACED 1" (25.4mm) O.C.
  - TREAD WIRE MUST RUN PERPENDICULAR TO TRAFFIC DIRECTION
  - ADDITIONAL INFORMATION CAN BE FOUND IN THE PRODUCT SPECIFICATION AND IS CONSIDERED PART OF THIS TRANSMITTAL.
  - FRAME MODEL NUMBER: BFE38LBC

PROJECT:				
ARCHITECT:				
CONTRACTOR:				
<p>9300 73rd Avenue North Brooklyn Park, MN 55428</p>			DESCRIPTION:	
			Elegril, 3/8", Stainless Steel Grille with Cast in Place, Level Bed, Stainless Steel Frame	
NAME	DATE	SIZE		
DRAWN	DKL	7/30/14	A	
RELEASED	PE	7/30/14	SCALE: NTS	SHEET 1 OF 1
			REV A	

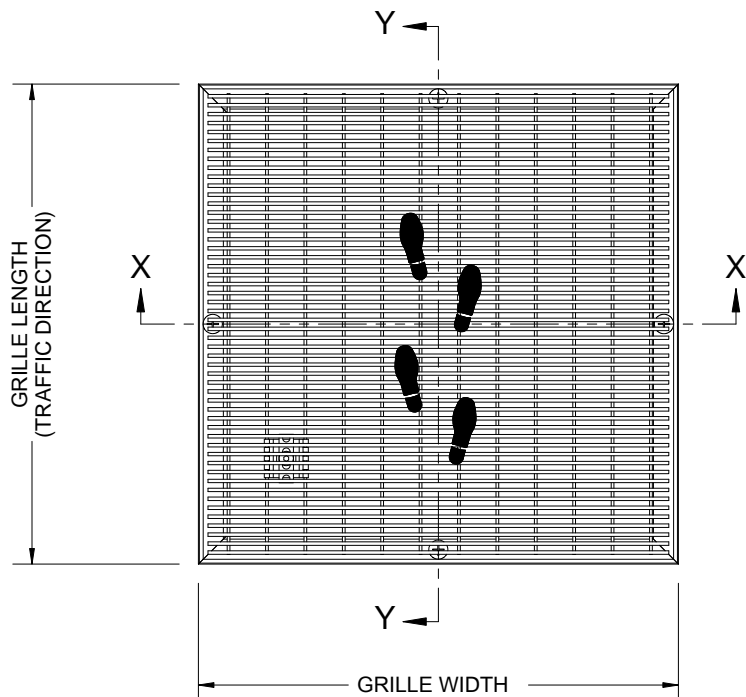
PROPRIETARY AND CONFIDENTIAL: THE INFORMATION CONTAINED IN THIS DRAWING IS THE SOLE PROPERTY OF BABCOCK-DAVIS. ANY REPRODUCTION IN PART OR AS A WHOLE WITHOUT THE WRITTEN PERMISSION OF BABCOCK-DAVIS IS PROHIBITED.



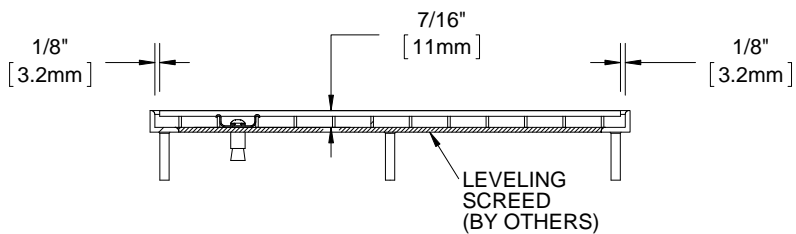
BGE38S

QTY	MODEL	WIDTH	LENGTH	FINISH	LOCATION

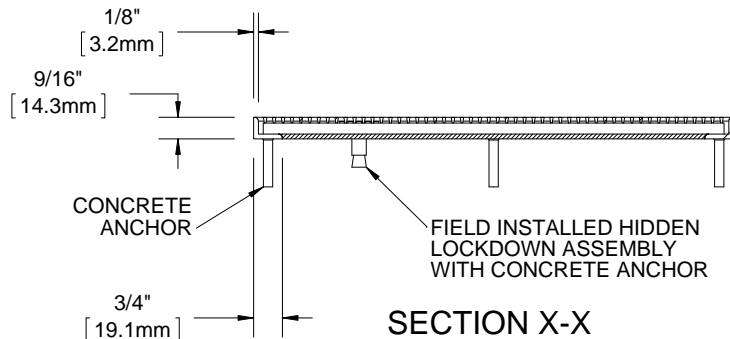
B



B



SECTION Y-Y



SECTION X-X

A

A

**NOTES:**

- FRAME ANCHOR SPACING: 6" FROM CORNERS, 24" MAX
- ALL STAINLESS STEEL FRAME CORNERS ARE WELDED
- ALL RAIL COMPONENTS ARE MADE OF TYPE 304 STAINLESS STEEL, ALL FRAME COMPONENTS ARE MADE OF TYPE 304 STAINLESS STEEL
- FOR MAXIMUM STRENGTH, EACH JOINT BETWEEN SURFACE WIRES AND SUPPORT RODS SHALL BE RESISTANCE WELDED. BECAUSE OF THE MANUFACTURING PROCESS USED TO DO THIS, THE SURFACE WIRES AND SUPPORT RODS ARE NOT PERPENDICULAR, AND THE WIRES AND RODS OF ADJACENT SECTIONS WILL NOT BE ALIGNED.
- GRILLE IS MADE WITH .093" X .156" (2.4mm X 4.0mm) STAINLESS STEEL WIRE SPACED .233 (5.9mm) O.C. AND WELDED SUPPORT RODS SPACED 1" (25.4mm) O.C.
- TREAD WIRE MUST RUN PERPENDICULAR TO TRAFFIC DIRECTION
- ADDITIONAL INFORMATION CAN BE FOUND IN THE PRODUCT SPECIFICATION AND IS CONSIDERED PART OF THIS TRANSMITTAL.
- FRAME MODEL NUMBER: BFE38LBM

PROPRIETARY AND CONFIDENTIAL: THE INFORMATION CONTAINED IN THIS DRAWING IS THE SOLE PROPERTY OF BABCOCK-DAVIS. ANY REPRODUCTION IN PART OR AS A WHOLE WITHOUT THE WRITTEN PERMISSION OF BABCOCK-DAVIS IS PROHIBITED.

PROJECT:

ARCHITECT:

CONTRACTOR:



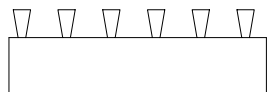
9300 73rd Avenue North  
Brooklyn Park, MN 55428

**DESCRIPTION:**

Elegril, 3/8", Stainless Steel Grille with Mechanically Fastened, Level Bed, Stainless Steel Frame

	NAME	DATE	SIZE
DRAWN	DKL	7/30/14	A
RELEASED	PE	7/30/14	

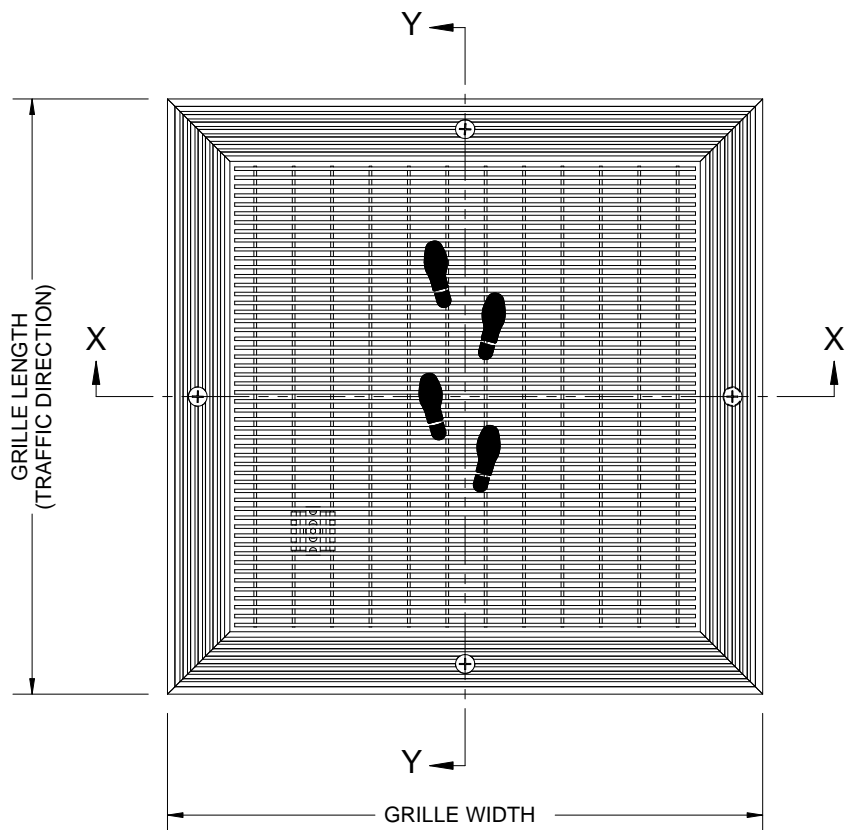
SCALE: NTS      SHEET 1 OF 1      REV A



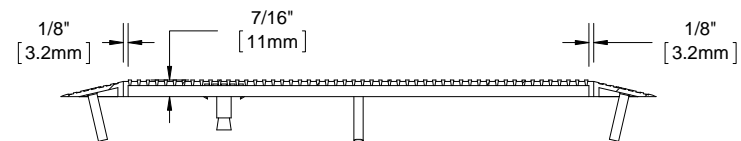
BGE38S

QTY	MODEL	WIDTH	LENGTH	FINISH	LOCATION

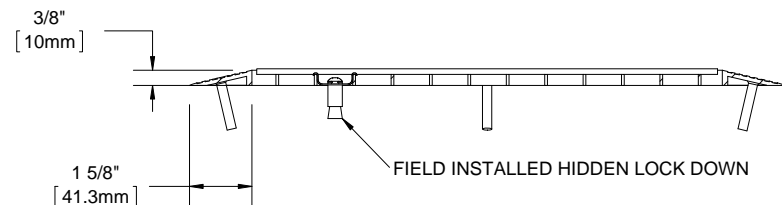
B



B



SECTION Y-Y



SECTION X-X

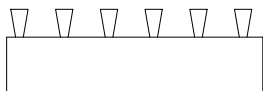
A

A

- NOTES:**
- FRAME ANCHOR SPACING: 6" FROM CORNERS, 24" MAX
  - ALL RAIL COMPONENTS ARE MADE OF TYPE 304 STAINLESS STEEL. ALL FRAME COMPONENTS ARE MADE OF 6063-T5 ALUMINUM ALLOY
  - FOR MAXIMUM STRENGTH, EACH JOINT BETWEEN SURFACE WIRES AND SUPPORT RODS SHALL BE RESISTANCE WELDED. BECAUSE OF THE MANUFACTURING PROCESS USED TO DO THIS, THE SURFACE WIRES AND SUPPORT RODS ARE NOT PERPENDICULAR, AND THE WIRES AND RODS OF ADJACENT SECTIONS WILL NOT BE ALIGNED.
  - GRILLE IS MADE WITH .093" X .156" (2.4mm X 4.0mm) STAINLESS STEEL WIRE SPACED .233 (5.9mm) O.C. AND WELDED SUPPORT RODS SPACED 1" (25.4mm) O.C.
  - TREAD WIRE MUST RUN PERPENDICULAR TO TRAFFIC DIRECTION
  - ADDITIONAL INFORMATION CAN BE FOUND IN THE PRODUCT SPECIFICATION AND IS CONSIDERED PART OF THIS TRANSMITTAL.
  - FRAME MODEL NUMBER: BFE38SAM

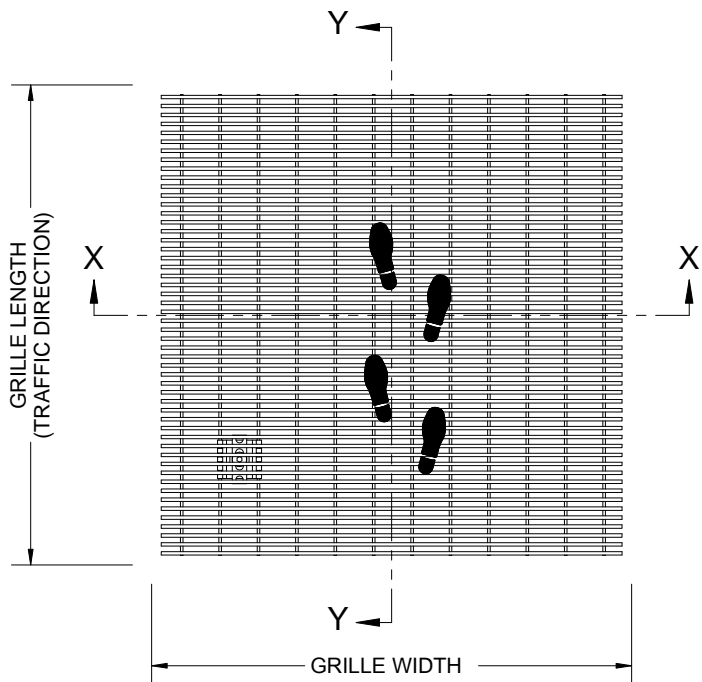
PROJECT:				
ARCHITECT:				
CONTRACTOR:				
 9300 73rd Avenue North Brooklyn Park, MN 55428			DESCRIPTION:	
			Elegril, 3/8", Stainless Steel Grille with Surface Mount, Level Bed, Aluminum Frame	
	NAME	DATE	SIZE	
DRAWN	DKL	7/30/14	A	
RELEASED	PE	7/30/14	SCALE: NTS	
			SHEET 1 OF 1	REV A

PROPRIETARY AND CONFIDENTIAL: THE INFORMATION CONTAINED IN THIS DRAWING IS THE SOLE PROPERTY OF BABCOCK-DAVIS. ANY REPRODUCTION IN PART OR AS A WHOLE WITHOUT THE WRITTEN PERMISSION OF BABCOCK-DAVIS IS PROHIBITED.

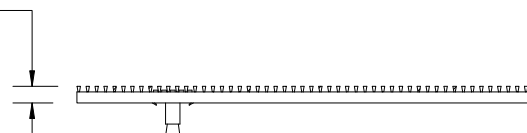


BGE38S

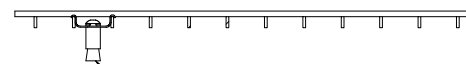
QTY	MODEL	WIDTH	LENGTH	FINISH	LOCATION



7/16"  
[11mm]



SECTION Y-Y



FIELD INSTALLED HIDDEN  
LOCKDOWN ASSEMBLY  
WITH CONCRETE ANCHOR

SECTION X-X

**NOTES:**

- ALL RAIL COMPONENTS ARE MADE OF TYPE 304 STAINLESS STEEL, ALL FRAME COMPONENTS ARE MADE OF TYPE 304 STAINLESS STEEL
- FOR MAXIMUM STRENGTH, EACH JOINT BETWEEN SURFACE WIRES AND SUPPORT RODS SHALL BE RESISTANCE WELDED. BECAUSE OF THE MANUFACTURING PROCESS USED TO DO THIS, THE SURFACE WIRES AND SUPPORT RODS ARE NOT PERPENDICULAR, AND THE WIRES AND RODS OF ADJACENT SECTIONS WILL NOT BE ALIGNED.
- GRILLE IS MADE WITH .093" X .156" (2.4mm X 4.0mm) STAINLESS STEEL WIRE SPACED .233 (5.9mm) O.C. AND WELDED SUPPORT RODS SPACED 1" (25.4mm) O.C.
- TREAD WIRE MUST RUN PERPENDICULAR TO TRAFFIC DIRECTION
- ADDITIONAL INFORMATION CAN BE FOUND IN THE PRODUCT SPECIFICATION AND IS CONSIDERED PART OF THIS TRANSMITTAL.

PROJECT:

ARCHITECT:

CONTRACTOR:



9300 73rd Avenue North  
Brooklyn Park, MN 55428

DESCRIPTION:

Elegril, 3/8", Stainless Steel Grille

	NAME	DATE	SIZE
DRAWN	DKL	1/2/15	A
RELEASED	PE	1/2/15	

SCALE: NTS      SHEET 1 OF 1      REV A