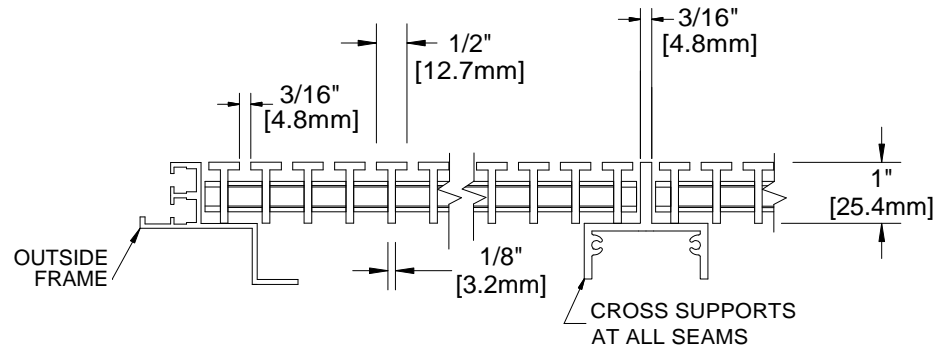
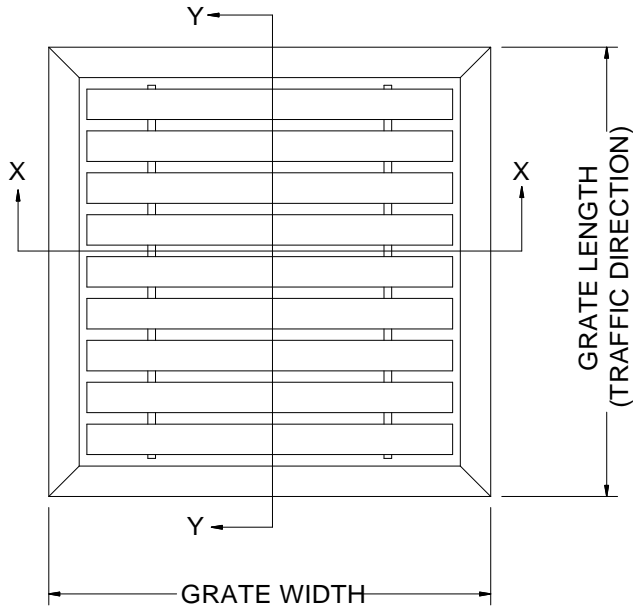
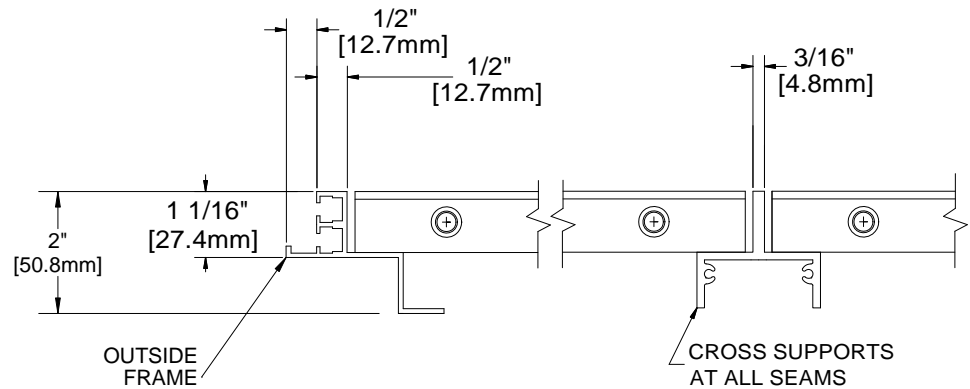


BGA10P

QTY	MODEL	WIDTH	LENGTH	FINISH	LOCATION



SECTION Y-Y



SECTION X-X

- NOTES:
- STANDARD MAXIMUM SECTION SIZE OF GRATE LENGTH/WIDTH NOT TO EXCEED 4'-0"
 - VERIFY TRAFFIC DIRECTION AND THAT SECTIONING DOES NOT OCCUR IN A TRAFFIC LANE
 - ALL RAIL COMPONENTS ARE MADE OF 6061-T6 ALUMINUM ALLOY, ALL FRAME COMPONENTS ARE MADE OF 6061-T6 ALUMINUM ALLOY
 - TREAD RAILS MUST RUN PERPENDICULAR TO TRAFFIC DIRECTION
 - GRATE DIMENSION ALLOWS FOR CLEARANCE BETWEEN GRATE SECTIONS AND FRAMES, 1/8" ±1/16" ALL AROUND
 - ADDITIONAL INFORMATION CAN BE FOUND IN THE PRODUCT SPECIFICATION AND IS CONSIDERED PART OF THIS TRANSMITTAL.
 - FRAME PART NUMBER: BFA10D2C

PROJECT:			
ARCHITECT:			
CONTRACTOR:			
 9300 73rd Avenue North Brooklyn Park, MN 55428		DESCRIPTION:	
		Alumagril™, 1" Aluminum Grate with Deep Pit, Cast-In, Aluminum Frame	
	NAME	DATE	SIZE
DRAWN	DKL	4/13/15	A
RELEASED	PE	4/13/15	SCALE: NTS
DWG. NO.		BGA10P-FD2C	
SHEET 1 OF 1		REV A	

PROPRIETARY AND CONFIDENTIAL: THE INFORMATION CONTAINED IN THIS DRAWING IS THE SOLE PROPERTY OF BABCOCK-DAVIS. ANY REPRODUCTION IN PART OR AS A WHOLE WITHOUT THE WRITTEN PERMISSION OF BABCOCK-DAVIS IS PROHIBITED.