

# **SPECIFICATIONS:**

- ① DOOR:**  
ALUMINUM 1/4" DIAMOND PLATE, MILL FINISH WITH AN HS20 LOAD RATING FOR INFREQUENT LOW SPEED TRAFFIC WITH A MAX SPAN DEFLECTION OF 1/150
- ② FRAME:**  
ALUMINUM, 1/4" EXTRUSION, GRAY PRIMER FINISH ON EXTERIOR SURFACES THAT COME INTO CONTACT WITH CONCRETE
- ③ HINGES:** TYPE 316 STAINLESS STEEL
- ④ SLAM LATCH:**  
TYPE 316 STAINLESS STEEL WITH INSIDE LEVER HANDLE AND OUTSIDE REMOVABLE HANDLE
- ⑤ COUNTER-BALANCE SPRING:**  
ENCLOSED, TYPE 17-7 SST SPRING
- ⑥ HOLD-OPEN ARM:**  
TYPE 316 STAINLESS STEEL WITH RED VINYL GRIP HANDLE

**⑦ FLUSH LIFT HANDLE:** TYPE 316 STAINLESS STEEL

**⑧ DRAINAGE COUPLING:** 1-1/2"

**⑨ FLUSH TYPE PLUG SEAL:** TYPE 316 STAINLESS STEEL

**⑩ GASKET:** EPDM

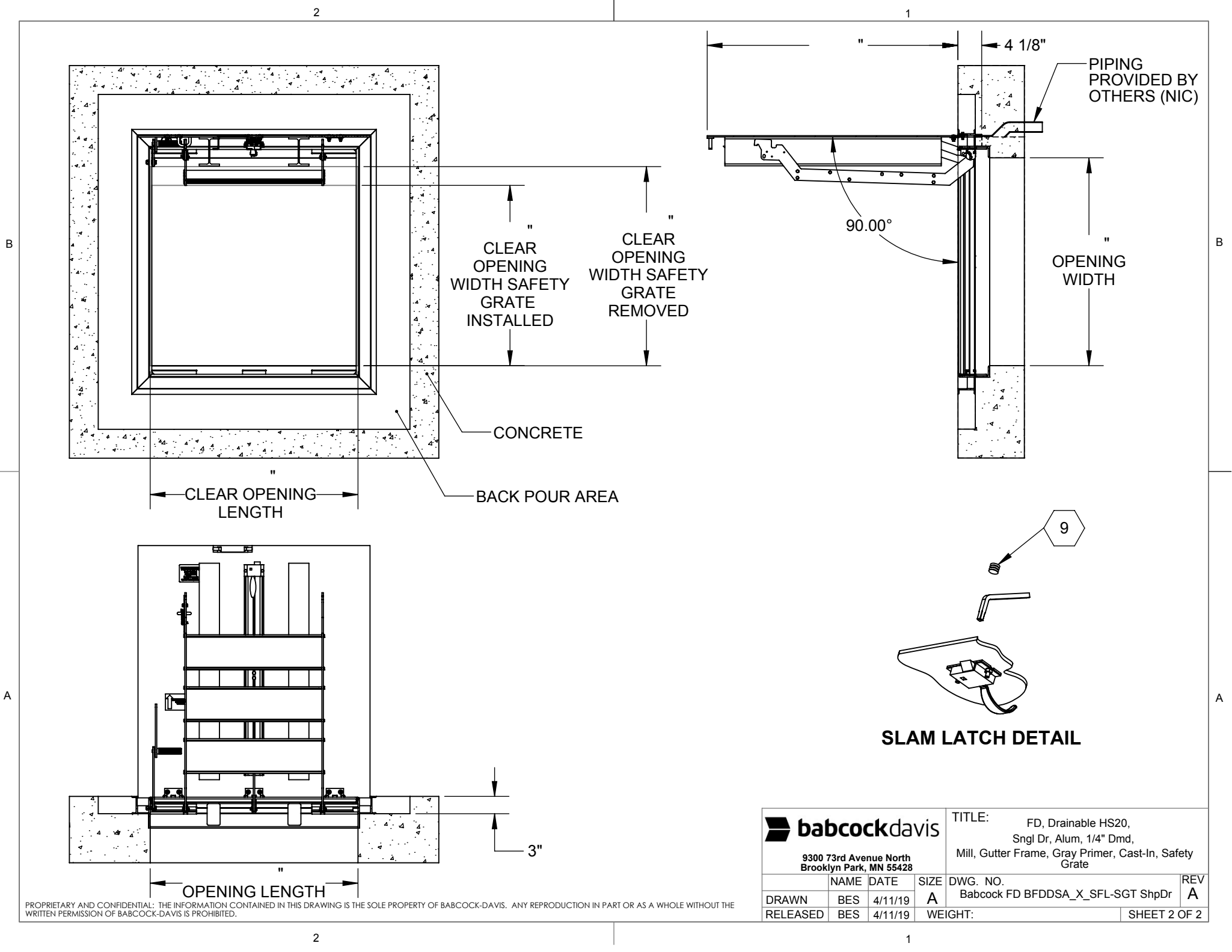
**⑪ SAFETY GRATE:**  
ALUMINUM, 6" SERRATED RAILS WITH SAFETY ORANGE POWDER COAT, LIVE LOAD OF 300PSF, SST HINGES AND INTEGRAL PADLOCK HASP


**⑫ NUT-RAIL:** ALUMINUM NUT-RAIL ON HINGE AND LATCH SIDES

FLOOR DOOR SIZE:

PROPRIETARY AND CONFIDENTIAL: THE INFORMATION CONTAINED IN THIS DRAWING IS THE SOLE PROPERTY OF BABCOCK-DAVIS. ANY REPRODUCTION IN PART OR AS A WHOLE WITHOUT THE WRITTEN PERMISSION OF BABCOCK-DAVIS IS PROHIBITED.

PROJECT:					
ARCHITECT:					
CONTRACTOR:					
QTY:					
PART#:					
<b>babcockdavis</b> 9300 73rd Avenue North, Brooklyn Park, MN 55428				TITLE:	
				FD, Drainable HS20, Sngl Dr, Alum, 1/4" Dmd, Mill, Gutter Frame, Gray Primer, Cast-In, Safety Grate	
	NAME	DATE	SIZE	DWG. NO.	REV
DRAWN	BES	4/11/19	A	Babcock FD BFDDSA_X_SFL-SGT ShpDr	A
RELEASED	BES	4/11/19	WEIGHT:	SHEET 1 OF 2	



 <b>babcockdavis</b>				TITLE: FD, Drainable HS20, Sngl Dr, Alum, 1/4" Dmd, Mill, Gutter Frame, Gray Primer, Cast-In, Safety Grate		
9300 73rd Avenue North Brooklyn Park, MN 55428				DWG. NO. Babcock FD BFDDSA_X_SFL-SGT ShpDr		REV A
	NAME	DATE	SIZE			
DRAWN	BES	4/11/19	A			
RELEASED	BES	4/11/19	WEIGHT:	SHEET 2 OF 2		