

SPECIFICATIONS:

- ① DOOR:**
ALUMINUM 1/4" DIAMOND PLATE, MILL FINISH WITH AN HS20 LOAD RATING FOR INFREQUENT LOW SPEED TRAFFIC WITH A MAX SPAN DEFLECTION OF 1/150
- ② FRAME:**
ALUMINUM, 1/4" EXTRUSION, GRAY PRIMER FINISH ON EXTERIOR SURFACES THAT COME INTO CONTACT WITH CONCRETE
- ③ HINGES:** TYPE 316 STAINLESS STEEL
- ④ SLAM LATCH:**
TYPE 316 STAINLESS STEEL WITH INSIDE LEVER HANDLE AND OUTSIDE REMOVABLE HANDLE
- ⑤ COUNTER-BALANCE SPRING:**
ENCLOSED, TYPE 17-7 SST SPRING
- ⑥ HOLD-OPEN ARM:**
TYPE 316 STAINLESS STEEL WITH RED VINYL GRIP HANDLE

⑦ FLUSH LIFT HANDLE: TYPE 316 STAINLESS STEEL

⑧ DRAINAGE COUPLING: 1-1/2"

⑨ FLUSH TYPE PLUG SEAL: TYPE 316 STAINLESS STEEL

⑩ GASKET: EPDM

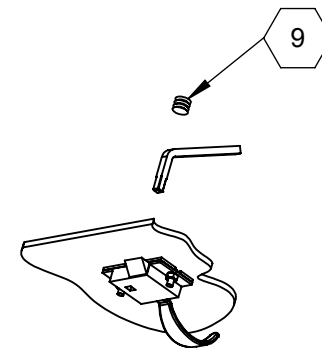
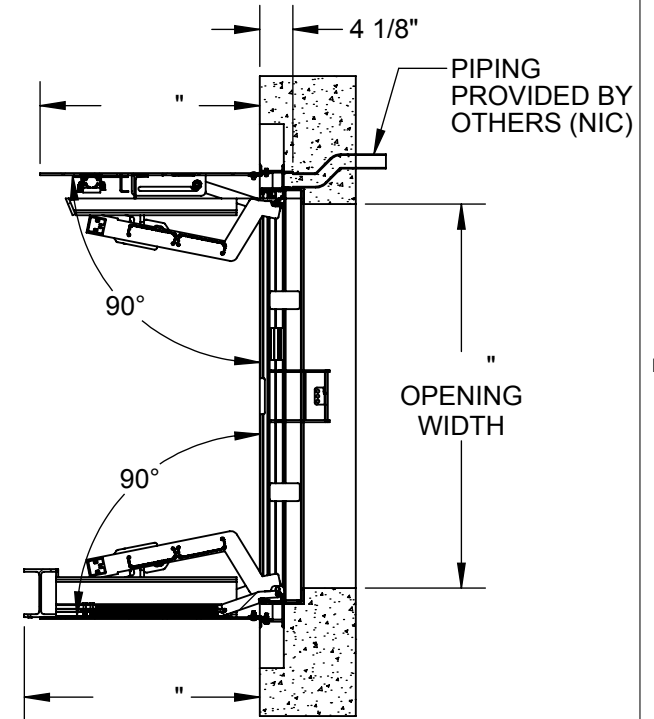
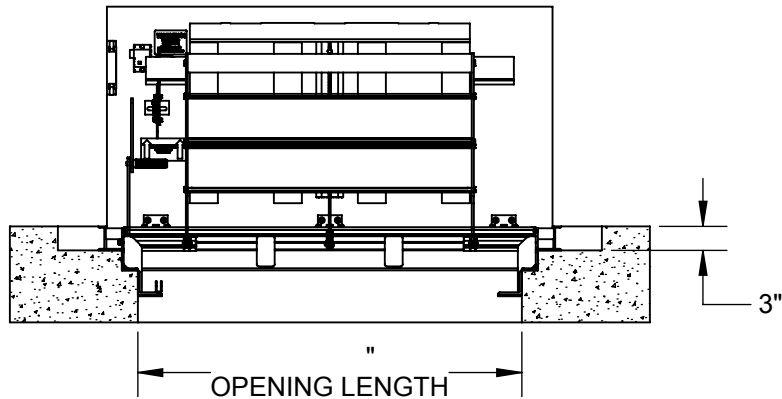
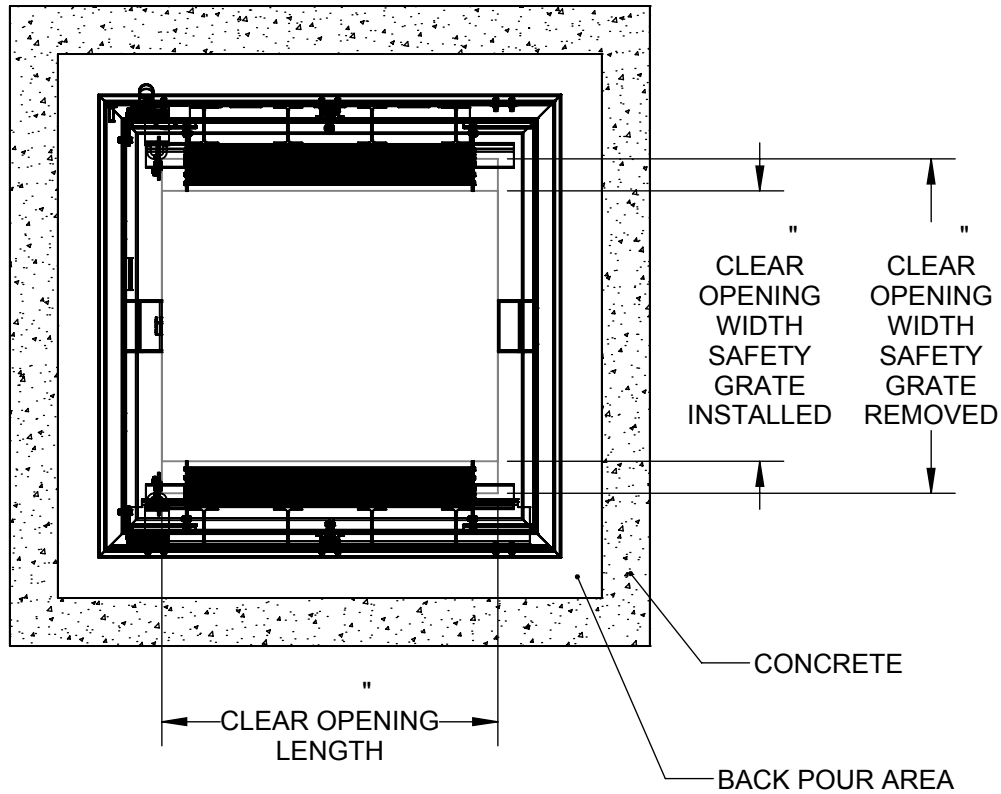
⑪ SAFETY GRATE:
ALUMINUM, 6" SERRATED RAILS WITH SAFETY ORANGE POWDER COAT, LIVE LOAD OF 300 PSF, SST HINGES AND INTEGRAL PADLOCK HASP

⑫ NUT-RAIL: ALUMINUM NUT-RAIL ON HINGE SIDES

FLOOR DOOR SIZE:

PROPRIETARY AND CONFIDENTIAL: THE INFORMATION CONTAINED IN THIS DRAWING IS THE SOLE PROPERTY OF BABCOCK-DAVIS. ANY REPRODUCTION IN PART OR AS A WHOLE WITHOUT THE WRITTEN PERMISSION OF BABCOCK-DAVIS IS PROHIBITED.

PROJECT:					
ARCHITECT:					
CONTRACTOR:					
QTY:					
PART#:					
 9300 73rd Avenue North, Brooklyn Park, MN 55428				TITLE:	
				FD, Drainable HS20, Dbl Dr, Alum, 1/4" Dmd, Mill, Cast-in, SST Spring Assist, 316 SST HDW, Gaskt, Slam Latch Removbl L Hdl, Safety Grt	
	NAME	DATE	SIZE	DWG. NO.	REV
DRAWN	BES	4/15/2019	A	Babcock FD BFDDSA_X_DFL-SGT ShpDr	-
RELEASED	BES	4/15/2019	WEIGHT:	SHEET 1 OF 2	



SLAM LATCH DETAIL



9300 73rd Avenue North
Brooklyn Park, MN 55428

TITLE: FD, Drainable HS20,
Dbl Dr, Alum, 1/4" Dmd, Mill, Cast-in,
SST Spring Assist, 316 SST HDW, Gasket,
Slam Latch Removbl L Hdl, Safety Grt

	NAME	DATE	SIZE	DWG. NO.	REV
DRAWN	BES	4/15/2019	A	Babcock FD BFDDSA_X_DFL-SGT ShpDr	-
RELEASED	BES	4/15/2019	WEIGHT:	SHEET 2 OF 2	