

SPECIFICATIONS:

① DOOR:
ALUMINUM 1/4" DIAMOND PLATE, MILL FINISH WITH AN H20
LOAD RATING FOR INFREQUENT LOW SPEED TRAFFIC WITH A
MAX SPAN DEFLECTION OF L/150

② FRAME:
ALUMINUM, 1/4" EXTRUSION, GRAY PRIMER FINISH ON
EXTERIOR SURFACES THAT COME INTO CONTACT WITH
CONCRETE

③ HINGES: TYPE 316 STAINLESS STEEL

④ SLAM LATCH:
TYPE 316 STAINLESS STEEL WITH INSIDE LEVER HANDLE AND
OUTSIDE REMOVABLE HANDLE

⑤ COUNTER-BALANCE SPRING:
ENCLOSED, TYPE 17-7 SST SPRING

⑥ HOLD-OPEN ARM:
TYPE 316 STAINLESS STEEL WITH RED VINYL GRIP HANDLE

⑦ FLUSH LIFT HANDLE: TYPE 316 STAINLESS STEEL


⑧ DRAINAGE COUPLING: 1-1/2"

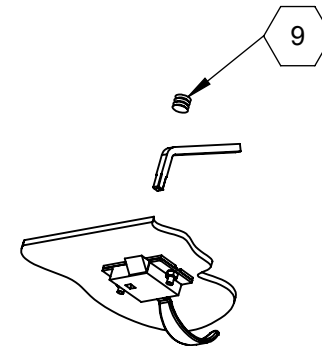
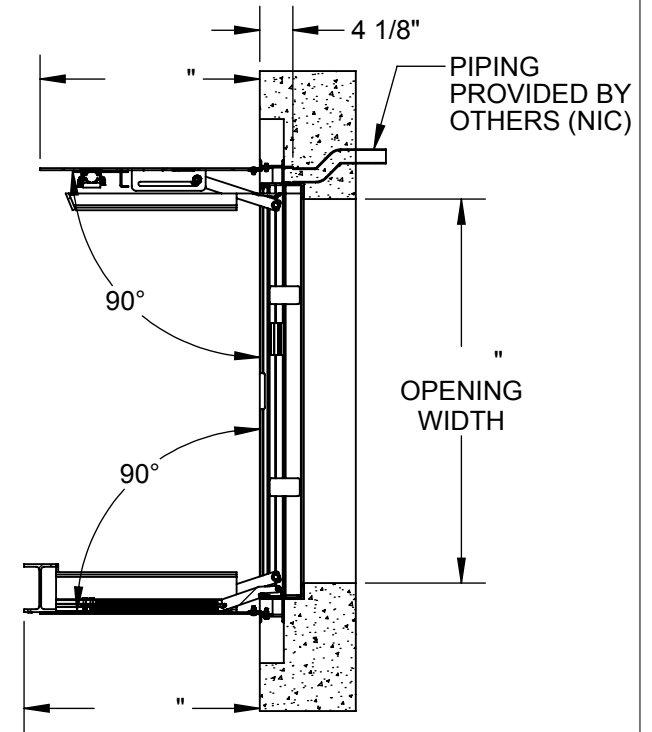
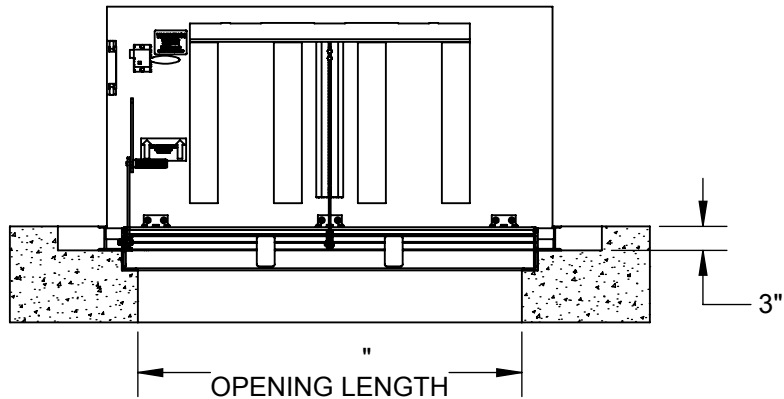
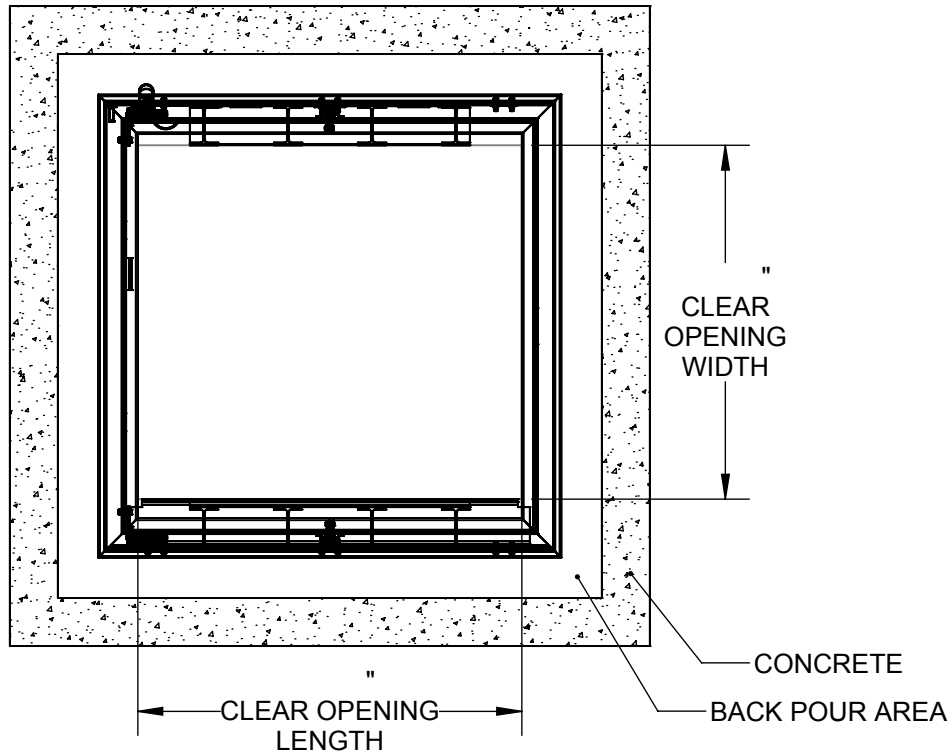
⑨ FLUSH TYPE PLUG SEAL: TYPE 316 STAINLESS STEEL

⑩ GASKET: EPDM

FLOOR DOOR SIZE:

PROPRIETARY AND CONFIDENTIAL: THE INFORMATION CONTAINED IN THIS DRAWING IS THE SOLE PROPERTY OF BABCOCK-DAVIS. ANY REPRODUCTION IN PART OR AS A WHOLE WITHOUT THE WRITTEN PERMISSION OF BABCOCK-DAVIS IS PROHIBITED.

PROJECT:					
ARCHITECT:					
CONTRACTOR:					
QTY:					
PART#:					
 9300 73rd Avenue North, Brooklyn Park, MN 55428				TITLE:	
				FD, Drainable H20, Dbl Dr, Alum, 1/4" Dmd, Mill, Cast-in, SST Spring Assist, 316 SST HDW, Gaskt, Slam Latch Removbl L Hdl	
NAME	DATE	SIZE	DWG. NO.	REV	
DRAWN	BES	4/15/2019	A	Babcock FD BFDDHA_X_DFL ShpDr	
RELEASED	BES	4/15/2019	WEIGHT:	SHEET 1 OF 2	



SLAM LATCH DETAIL



9300 73rd Avenue North
Brooklyn Park, MN 55428

TITLE: FD, Drainable H2O,
Dbl Dr, Alum, 1/4" Dmd, Mill, Cast-in,
SST Spring Assist, 316 SST HDW, Gasket,
Slam Latch Removbl L Hdl

	NAME	DATE	SIZE	DWG. NO.	REV
DRAWN	BES	4/15/2019	A	Babcock FD BFDDHA_X_DFL ShpDr	-
RELEASED	BES	4/15/2019	WEIGHT:		

SHEET 2 OF 2