

Fire-Rated

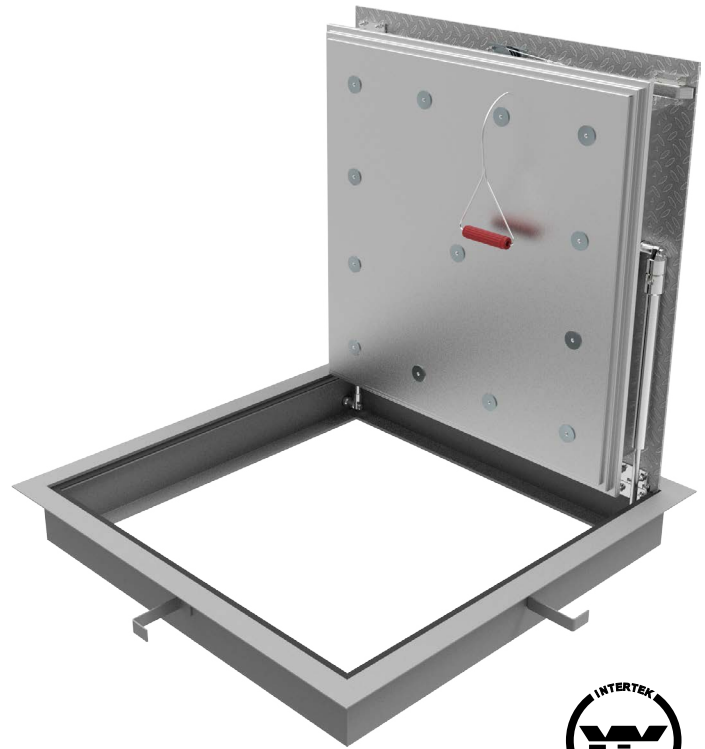
DIAMOND TREAD FLOOR DOOR

Babcock-Davis' Diamond Tread Floor Door is designed to contain fire from penetrating through the opening. Available with 2- or 3-hour fire-rating options, this floor door is designed for pedestrian traffic loads.

FEATURES

BOLT-IN INSTALLATION Available with a bolt-in option for retrofit or drop-in installations.

FIRE-RATED Tested to NFPA 288, this floor door is Warnock-Hersey labeled with 2- or 3-hour fire-rating with a maximum temperature rise to 250°F.



DETAILS

LOAD 300 psf live load

MATERIAL Aluminum: 1/4 inch, mill finish, gray primer on exterior frame (for cast-in only)

COVER Diamond tread plate

FIRE-RATING 2- or 3-Hour

FRAME Angled Frame

INSTALLATION Cast-In or Bolt-in

SPRING Gas spring, Type 316 Stainless Steel

HINGES Heavy-duty Type 316 Stainless Steel butt hinge

LATCH Two-point slam latch, zinc plated steel, with inside pull release cable, includes removable 5/16 inch steel square "L" handle and threaded plug

COMPLIANCE NFPA 288

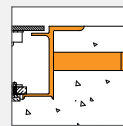
OPTIONS Self-closing mechanism automatically closes door at 165°F in event of fire, dampers for slow opening

MATERIALS

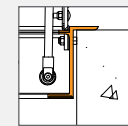


Aluminum

FRAME



Angle Frame
Cast-in



Angle Frame
Bolt-in

ORDER GUIDE

BASE	RATING	WIDTH	LENGTH	OPTIONS
BFC				
	RM 2-Hour CM 3-Hour	Standard Sizes (W x L) Single Leaf 24" x 24" 36" x 36" 30" x 30" 42" x 42" 30" x 36" 48" x 60"		SC Self-Closing Mechanism W Wood Frame Install

Additional sizes available, call for more information.