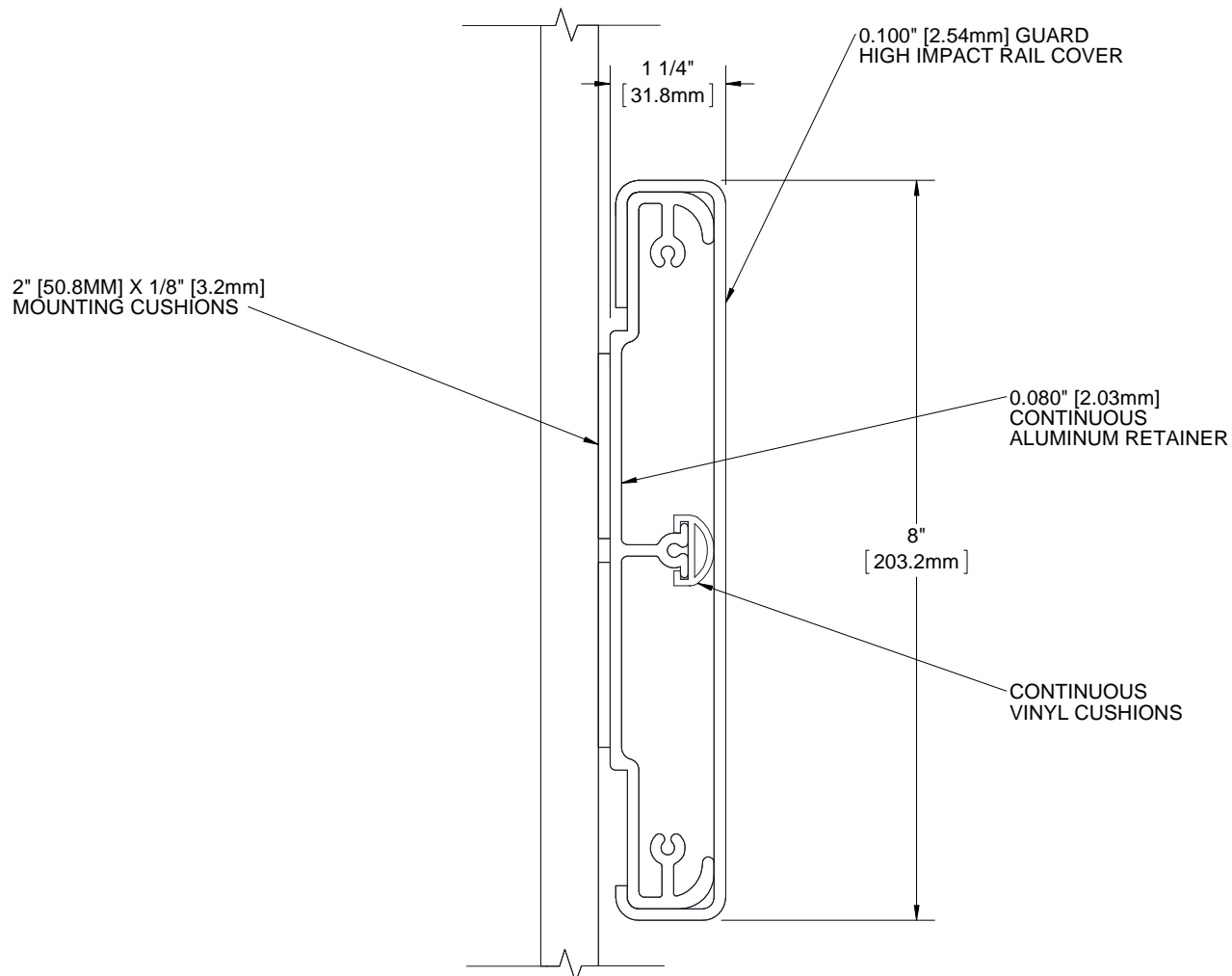


QUANTITY

COLOR



NOTES:

- PROFILE:** HIGH IMPACT VINYL ACRYLIC EXTRUSION LOCKED IN PLACE, NOMINAL 0.100" (2.54mm) THICK
- CLASS A FIRE RATING,** TESTED TO ASTM E84
- RETAINER:** CONTINUOUS 6063 T-5 ALUMINUM RETAINER, NOMINAL 0.080" (2.03mm) THICK
- EXTRUSION:** PEBBLE GRAIN FINISH WHICH CONTAINS EPA REGISTERED MICRO-CHEK ANTIMICROBIAL AGENT
- VINYL CRASH RAIL LENGTH:** PROVIDED IN 20' CONTINUOUS SECTIONS
- END CAP:** #BCRVS8C-EC, **OUTSIDE CORNER:** #BCRVS8C-OC, **135 DEG OUTSIDE CORNER:** #BCRVS8C-OC135, **INSIDE CORNER:** #BCRVS8C-IC, **SPLICE KIT:** #BCRVS8C-SK
- FASTENERS AND PARTITION COMPONENTS PROVIDED BY OTHERS.**

PROJECT:																
ARCHITECT:																
CONTRACTOR:																
 9300 73rd Avenue North Brooklyn Park, MN 55428		TITLE: 8" VINYL CRASH RAIL SURFACE MOUNT 1/8" CUSHION, CONTINUOUS RETAINER														
		<table border="1"> <tr> <th>NAME</th> <th>DATE</th> <th>SIZE</th> <th>DWG. NO.</th> <th>REV</th> </tr> <tr> <td>DRAWN</td> <td>MDS 23APR13</td> <td>A</td> <td>BCRVS8C-C125</td> <td>A</td> </tr> <tr> <td>RELEASED</td> <td>PGE 01MAY13</td> <td></td> <td>WEIGHT: 2.25 lbs/ft</td> <td>SHEET 1 OF 1</td> </tr> </table>	NAME	DATE	SIZE	DWG. NO.	REV	DRAWN	MDS 23APR13	A	BCRVS8C-C125	A	RELEASED	PGE 01MAY13		WEIGHT: 2.25 lbs/ft
NAME	DATE	SIZE	DWG. NO.	REV												
DRAWN	MDS 23APR13	A	BCRVS8C-C125	A												
RELEASED	PGE 01MAY13		WEIGHT: 2.25 lbs/ft	SHEET 1 OF 1												

PROPRIETARY AND CONFIDENTIAL: THE INFORMATION CONTAINED IN THIS DRAWING IS THE SOLE PROPERTY OF BABCOCK-DAVIS. ANY REPRODUCTION IN PART OR AS A WHOLE WITHOUT THE WRITTEN PERMISSION OF BABCOCK-DAVIS IS PROHIBITED.