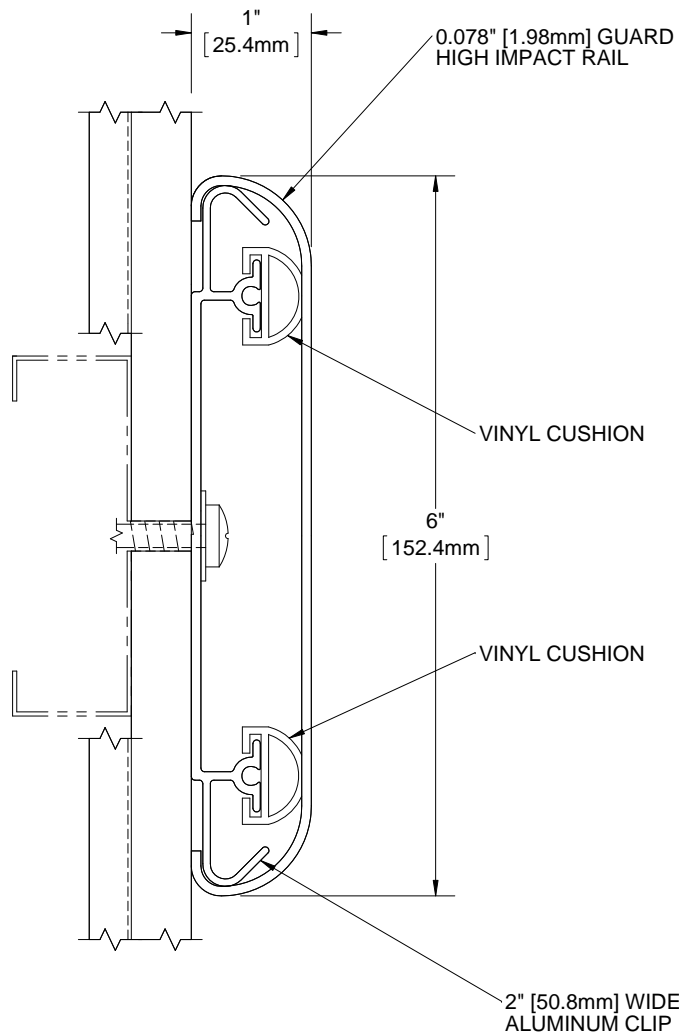



QUANTITY

COLOR



NOTES:

- PROFILE:** HIGH IMPACT VINYL ACRYLIC EXTRUSION LOCKED IN PLACE, NOMINAL 0.078" (1.98mm) THICK
- CLASS A FIRE RATING, TESTED TO ASTM E84
- RETAINER:** 6063 T-5 ALUMINUM RETAINER CLIP, NOMINAL 0.62" (1.57mm) THICK X 2" WIDE
- EXTRUSION:** PEBBLE GRAIN FINISH WHICH CONTAINS EPA REGISTERED MICRO-CHEK ANTIMICROBIAL AGENT
- VINYL CRASH RAIL LENGTH:** PROVIDED IN 20' CONTINUOUS SECTIONS
- END CAP: #BCRVS6C-EC, OUTSIDE CORNER: #BCRVS6E-OC, 135 DEG OUTSIDE CORNER: #BCRVS6E-OC135, SPLICE KIT: #BCRVS6E-SK
- FASTENERS AND PARTITION COMPONENTS PROVIDED BY OTHERS.

PROJECT:					
ARCHITECT:					
CONTRACTOR:					
 9300 73rd Avenue North Brooklyn Park, MN 55428		TITLE: 6" VINYL CRASH RAIL SURFACE MOUNT 2" CLIP RETAINER			
		NAME	DATE	SIZE	DWG. NO.
DRAWN	MDS	23APR13	A	BCRVS6E	B
RELEASED	PGE	01MAY13	WEIGHT: 0.50 lbs/ft	SHEET 1 OF 1	