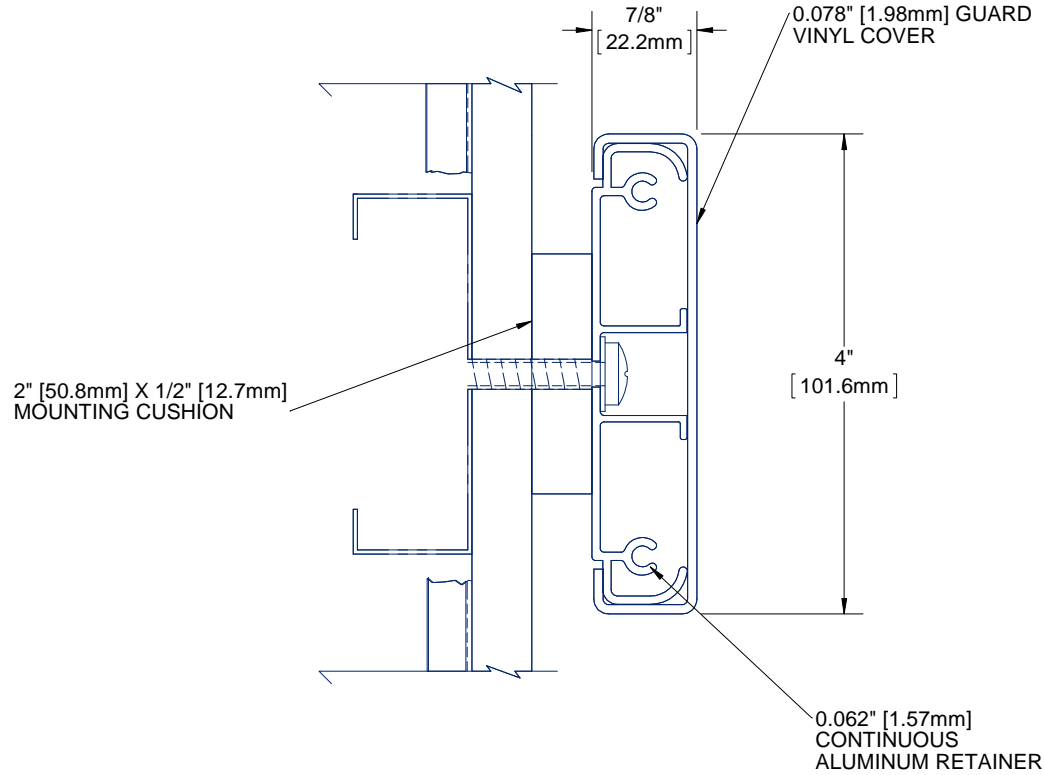



QUANTITY

COLOR



**NOTES:**

1. **PROFILE:** HIGH IMPACT VINYL ACRYLIC EXTRUSION LOCKED IN PLACE, NOMINAL 0.078" (1.98mm) THICK
2. CLASS A FIRE RATING, TESTED TO ASTM E84
3. **RETAINER:** CONTINUOUS 6063 T-5 ALUMINUM RETAINER, NOMINAL 0.062" (1.57mm) THICK
4. **EXTRUSION:** PEBBLE GRAIN FINISH WHICH CONTAINS EPA REGISTERED MICRO-CHEK ANTIMICROBIAL AGENT
5. **VINYL CRASH RAIL LENGTH:** PROVIDED IN 20' CONTINUOUS SECTIONS
6. END CAP: #BCRVS4C-EC, OUTSIDE CORNER: #BCRVS4C-OC, 135 DEG OUTSIDE CORNER: #BCRVS4C-OC135, INSIDE CORNER: #BCRVS4C-IC, SPLICE KIT: #BCRVS4C-SK
7. FASTENERS AND PARTITION COMPONENTS PROVIDED BY OTHERS.

|  |     |  |                     |              |          |
|--|-----|--|---------------------|--------------|----------|
| PROJECT:   |     |  |                     |              |          |
| ARCHITECT:   |     |  |                     |              |          |
| CONTRACTOR:  |     |  |                     |              |          |
| <br>9300 73rd Avenue North<br>Brooklyn Park, MN 55428 |     | TITLE: 4" VINYL CRASH RAIL<br>SURFACE MOUNT<br>1/2" CUSHION, CONTINUOUS RETAINER |                     |              |          |
|  |     | NAME   | DATE                | SIZE         | DWG. NO. |
| DRAWN  | MDS | 25APR13  | A                   | BCRVS4C-C05  | A        |
| RELEASED   | PGE | 01MAY13  | WEIGHT: 1.05 lbs/ft | SHEET 1 OF 1 |          |