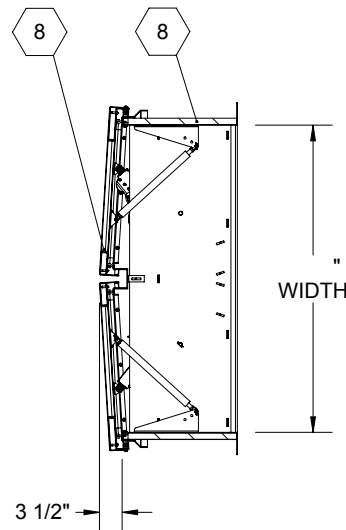
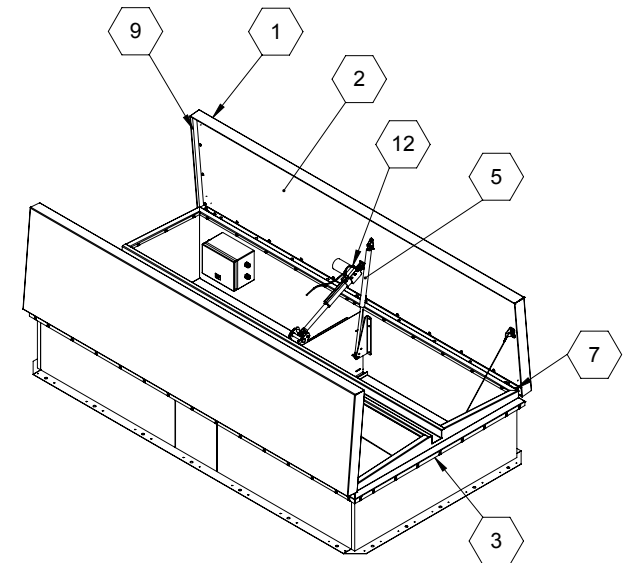


SECTION A-A



SECTION B-B



**SPECIFICATIONS:**

- ① **COVER:** 11 GAUGE ALUMINUM COVER STIFFENED TO WITHSTAND A LIVE LOAD OF 40 PSF WITH A MAX DEFLECTION OF 1/150 OF THE SPAN
- ② **LINER:** 18 GAUGE ALUMINUM
- ③ **CURB AND COUNTERFLASH W/ EZ TAB:** 11 GAUGE ALUMINUM
- ④ **FINISH:** COVER - MILL  
CURB - MILL
- ⑤ **GAS SPRING WITH DAMPER:** DESIGNED TO OPEN AGAINST A 10PSF SNOW LOAD IN NOT LESS THAN 2 SECONDS
- ⑥ **LATCH:** ZINC PLATED ROTARY LATCH ASSEMBLY
- ⑦ **HINGES:** ZINC PLATED STEEL WITH STAINLESS STEEL HINGE PINS

⑧ **INSULATION:**

1" POLYISO CURB (R6/LTTR5.6), 1" POLYISO COVER (R6/LTTR5.6)

⑨ **GASKET:** ADHESIVE BACKED EPDM RUBBER EXTRUSION

⑩ **THERMAL RELEASE MECHANISM:** VENT COVERS OPEN

THERMALLY BY HEAT AT FUSIBLE LINK TEMPERATURE


⑪ **MANUAL OPERATION:**

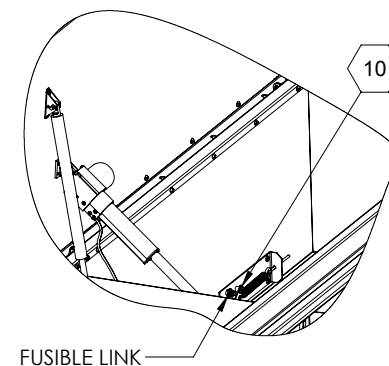
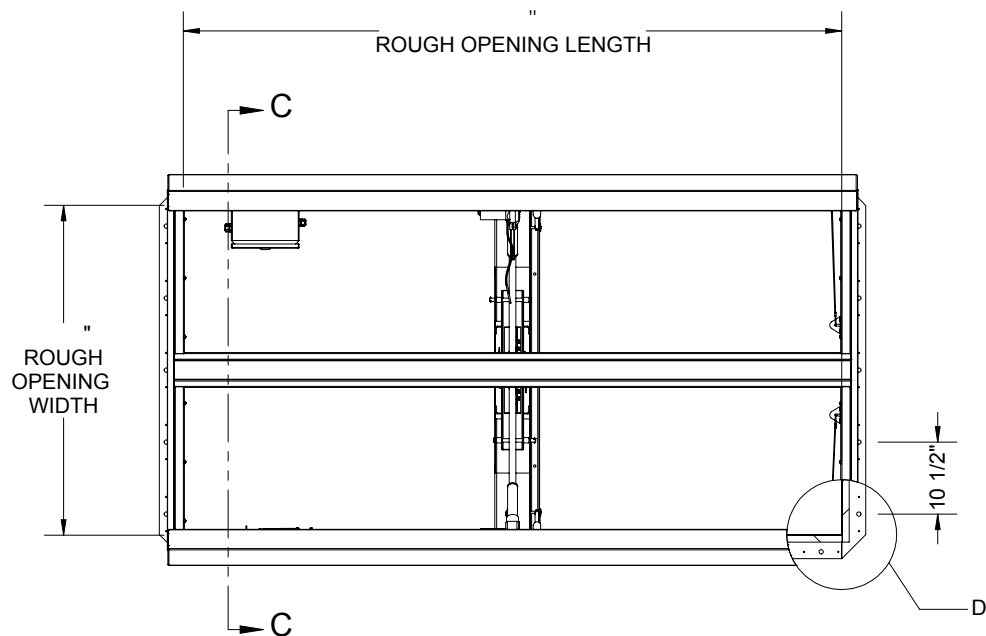
VENT COVERS OPEN WITH INTERNAL AND EXTERNAL MANUAL PULL HANDLES, 1/16" DIA SST CABLE, CLOSE VENT AT ROOFTOP OR WITH ELECTRICAL CONTROLLER

⑫ **ELECTRICAL RELEASE/CONTROL:**

LINEAR ACTUATORS DRIVE THE COVERS OPEN AND CLOSED CONTROLLED BY A SER PUSH BUTTON STATION. SYSTEM MUST BE POWERED BY 120/240 VAC

**SMOKE VENT SIZE:**

PROJECT:				
ARCHITECT:				
CONTRACTOR:				
QTY:				
PART#:				
 9300 73rd Avenue North, Brooklyn Park, MN 55428		TITLE:		
		Smoke Vent, SafeMAX, Alum, Mill, Sngl Wall Curb		
NAME	DATE	SIZE	DWG. NO.	REV
DRAWN	BES		A	BSVSA_X_D1A_L-H18
RELEASED	BES		WEIGHT: VARIES	SHEET 1 OF 2



SMOKE VENT COVER OPENS WHEN ACTIVATED BY:

A. THERMAL RELEASE MECHANISM: RELEASED BY HEAT WITH A UL LISTED FUSIBLE LINK AT TEMPERATURE °F

OPTIONS: 165°F, 212°F, 280°F, 350°F, 360°F, 370°F, 386°F, 450°F

B. MANUAL OPENING: RELEASED BY EXTERNAL AND INTERNAL PULL CABLES WITH HANDLES AND 5FT OF INTERNAL CABLE PROVIDED

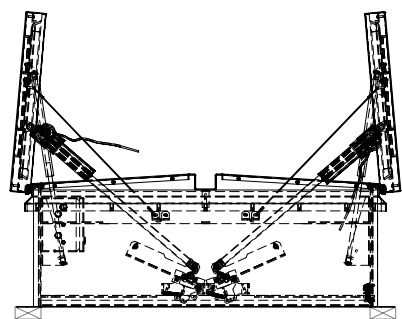
C. ELECTRICAL OPENING:

- PUSH BUTTON CONTROLLER, HOLD BUTTON TO OPEN
- 24 VDC RELAY INCLUDED IN CONTROL BOX TO RECEIVE OPTIONAL SIGNAL FROM FIRE ALARM, SMOKE DETECTOR, ETC BY OTHERS

SMOKE VENT COVERS CLOSE WHEN ACTIVATED BY:

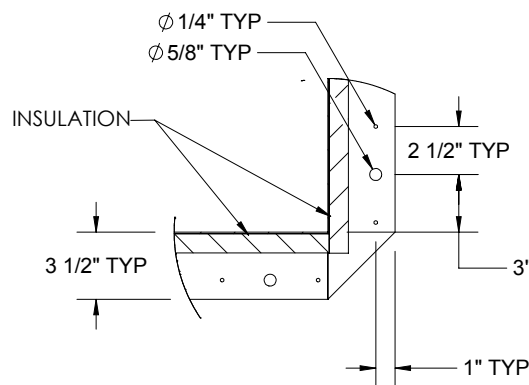
A. ELECTRICAL PUSH BUTTON CONTROLLER, HOLD BUTTON TO CLOSE

B. MANUALLY FROM ROOFTOP IF MANUALLY OR THERMALLY OPENED (AFTER THERMAL LINK IS REPLACED)



CONCRETE/WOOD/OTHER  
MATERIAL PROVIDED BY OTHER  
NIC

**SECTION C-C**



**DETAIL D**

				TITLE:	
9300 73rd Avenue North, Brooklyn Park, MN 55428				Smoke Vent, SafeMAX, Alum, Mill, Sngl Wall Curb	
NAME	DATE	SIZE	DWG. NO.	REV	
DRAWN	BES		A	BSVSA_X_D1A_L-H18	
RELEASED	BES		WEIGHT: VARIES	SHEET 2 OF 2	